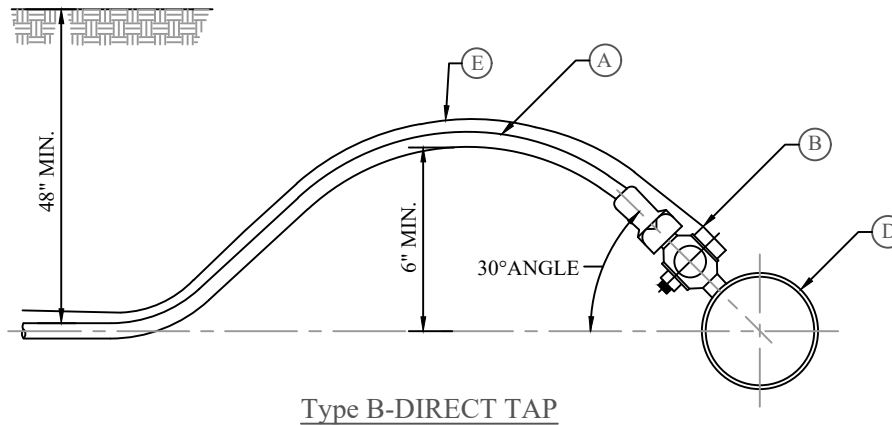
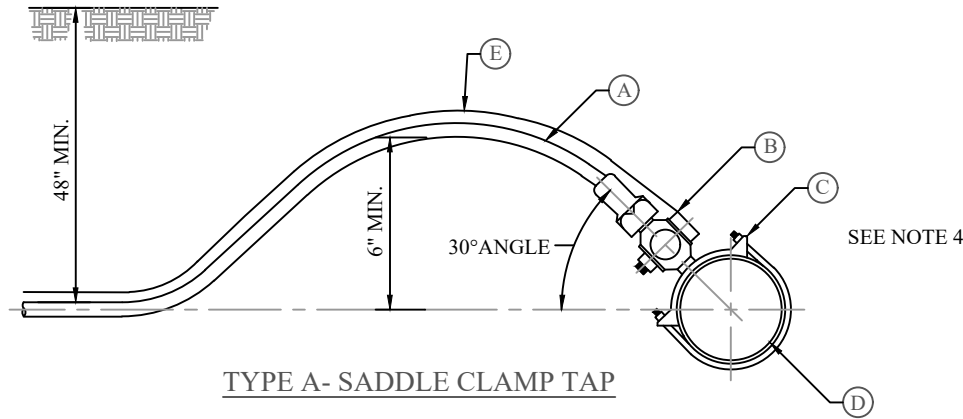


***REFER TO PARTS LIST ON CW-PL FOR APPROVED PARTS MODELS.**



NOTES FOR 1" MINIMUM SERVICE TAPS:

1. **INSPECTION:** PRIOR TO BACKFILLING, SECURE INSPECTION OF INSTALLATION BY CITY.
2. **BACKFILL:** INSTALL ALL BACKFILL MATERIAL PER APWA SECTION 31 05 13 IN LIFTS NOT EXCEEDING 8" AFTER COMPACTION. COMPACT EACH LIFT TO A MINIMUM RELATIVE DENSITY OF 95%.
3. **TAPPING:** PLACE TAPS A MINIMUM 24" APART. USE A TAPPING TOOL WHICH IS SIZED CORRESPONDING TO THE SIZE OF THE SERVICE LINE TO BE INSTALLED. NO TAPS WITHIN 24" OF THE END OF PIPE OR ANY FITTING.
4. **PVC PIPE:** A SERVICE SADDLE CLAMP IS REQUIRED ON ALL PVC PIPE.
5. **TAPE:** TEFLON TAPE IS REQUIRED ON ALL TAPS.

LEGEND		
NO.	ITEM	DESCRIPTION
(A)	1" POLY PIPE	IPS POLY PIPE
(B)	1" CORPORATION STOP	TYPE A SEE PARTS LIST* TYPE B SEE PARTS LIST*
(C)	SERVICE SADDLE CLAMP	SEE PARTS LIST*
(D)	WATER MAIN PIPE	(D.I., P.V.C.) *
(E)	TRACER WIRE	10G TYPE K (SOFT)

* DI PIPE MAY BE DIRECT TAPPED, IF DIRECT TAP USE CC THREADS

Q:\ENGINEERING\STANDARDS\CITY STANDARDS\WORKING EDITION\CAD\SECTION 6 STANDARD DRAWINGS\05 - CW\CW-01.DWG 6/25/2024 3:42 PM

2024 ST-ND-RDS UPD-TE REVISION	6/25/2024
NO.	REVISION DESCRIPTION
D-TE	

THIS DOCUMENT -NO- ILLUSTRATIONS HEREON -RE- PROVIDED -S- ST-ND-RD CONSTRUCTION DET-ILS- WITHIN HERRIMAN CITY. DEVI-TION FROM THIS DOCUMENT REQUIRES -PPROV-L- OF HERRIMAN CITY. HERRIMAN CITY C-NNOT BE HELD U-BLE FOR MISUSE OR CH-NGES REG-RDING THIS DOCUMENT.



HERRIMAN CITY
ENGINEERING DEPARTMENT
CULINARY WATER

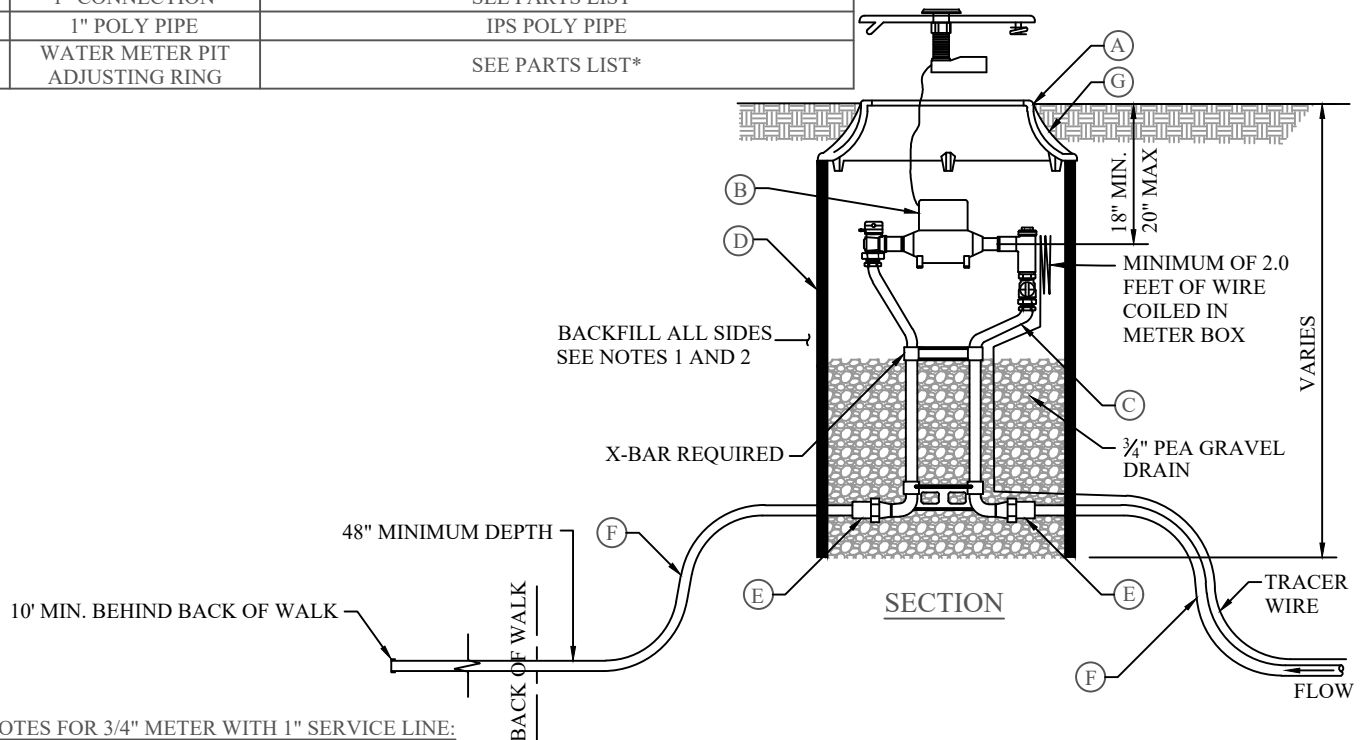
3/4" AND 1" WATER METER W/ 1" WATER SERVICE

CW-01

Q:\ENGINEERING\STANDARDS\CITY STANDARDS\CURRENT EDITION\CAD\05 - CW\CW-01A.DWG
4/11/2025 4:25 PM

LEGEND		
NO.	ITEM	DESCRIPTION
(A)	FRAME AND COVER	SEE PARTS LIST FOR SIZE INFORMATION THE WORDS "WATER METER" CAST INTO COVER RECESSED ANTENNA HOLE REQUIRED IN COVER
(B)	WATER METER	SEE PARTS LIST*
(C)	3/4" WATER METER YOKE	SEE PARTS LIST*
	1" WATER METER YOKE	SEE PARTS LIST*
(D)	METER BARREL	3/4" METER - 21" DIAM. - 36" HEIGHT WHITE HDPE BARREL (SEE NOTE 4 BELOW) ⚠ 1" METER - 24" DIAM. - 36" HEIGHT WHITE HDPE BARREL 1.5" & 2" METER - 30" DIAM. - 36" HEIGHT HDPE BARREL (LANDSCAPE INSTALLATIONS ONLY)
(E)	1" CONNECTION	SEE PARTS LIST*
(F)	1" POLY PIPE	IPS POLY PIPE
(G)	WATER METER PIT ADJUSTING RING	SEE PARTS LIST*

TYPICAL 3/4" METER



NOTES FOR 3/4" METER WITH 1" SERVICE LINE:

- INSPECTION: PRIOR TO BACKFILLING AROUND THE METER BOX, SECURE INSPECTION OF INSTALLATION BY ENGINEER.
- BACKFILLING: INSTALL ALL BACKFILL MATERIAL PER APWA SECTION 31 05 13 IN LIFTS NOT EXCEEDING 6" AFTER COMPACTION. COMPACT EACH LIFT TO A MINIMUM RELATIVE DENSITY OF 95%.
- METER BOX: NO GRADE RINGS ALLOWED TO RAISE METER BOX.
- METER IN TRAFFIC AREAS: METER BARREL SHALL BE 30" DIAM. RING & LID SHALL BE 24" AND AS SPECIFIED IN PARTS LIST.
(A) ALL METERS IN TRAFFIC AREAS SHALL BE INSTALLED WITH A CONCRETE COLLAR PER CW-08
- METER: HERRIMAN CITY WILL PROVIDE AND INSTALL METER. ⚠
- PIPE: INSTALL 1" IPS POLY PIPE TO 10' MIN. FROM BACK OF WALK.
- PLACEMENT:
(A) METERS WITHIN 3 FT OF A DRIVE APPROACH OR ANY VEHICLE PATH SHALL COMPLY WITH NOTE 4 & 4A (ABOVE) ⚠
(B) IN NEW CONSTRUCTION, INSTALL METER BOX NEAR CENTER OF LOT IN PARKSTRIP. IF DRIVEWAY LOCATIONS ARE KNOWN, PLACE THE WATER SERVICE ON THE WIDE SIDE OF THE LOT.
(C) 5' MIN. AWAY FROM MAILBOXES, TREES, UTILITY BOX OR ANY OTHER OBSTRUCTION. ⚠
- INSERTS REQUIRED WITH ALL COMPRESSION FITTINGS.
- METER SETTER MUST BE PLACED AT 90° ANGLE TO STREET.

2024 STANDARDS UPDATE, REVISION	5/24/2024
NO.	REVISION DESCRIPTION

THIS DOCUMENT AND ANY ILLUSTRATIONS HEREON ARE PROVIDED AS STANDARD CONSTRUCTION DETAILS WITHIN HERRIMAN CITY. DEVIATION FROM THIS DOCUMENT REQUIRES APPROVAL OF HERRIMAN CITY. HERRIMAN CITY CANNOT BE HELD LIABLE FOR MISUSE OR CHANGES REGARDING THIS DOCUMENT.

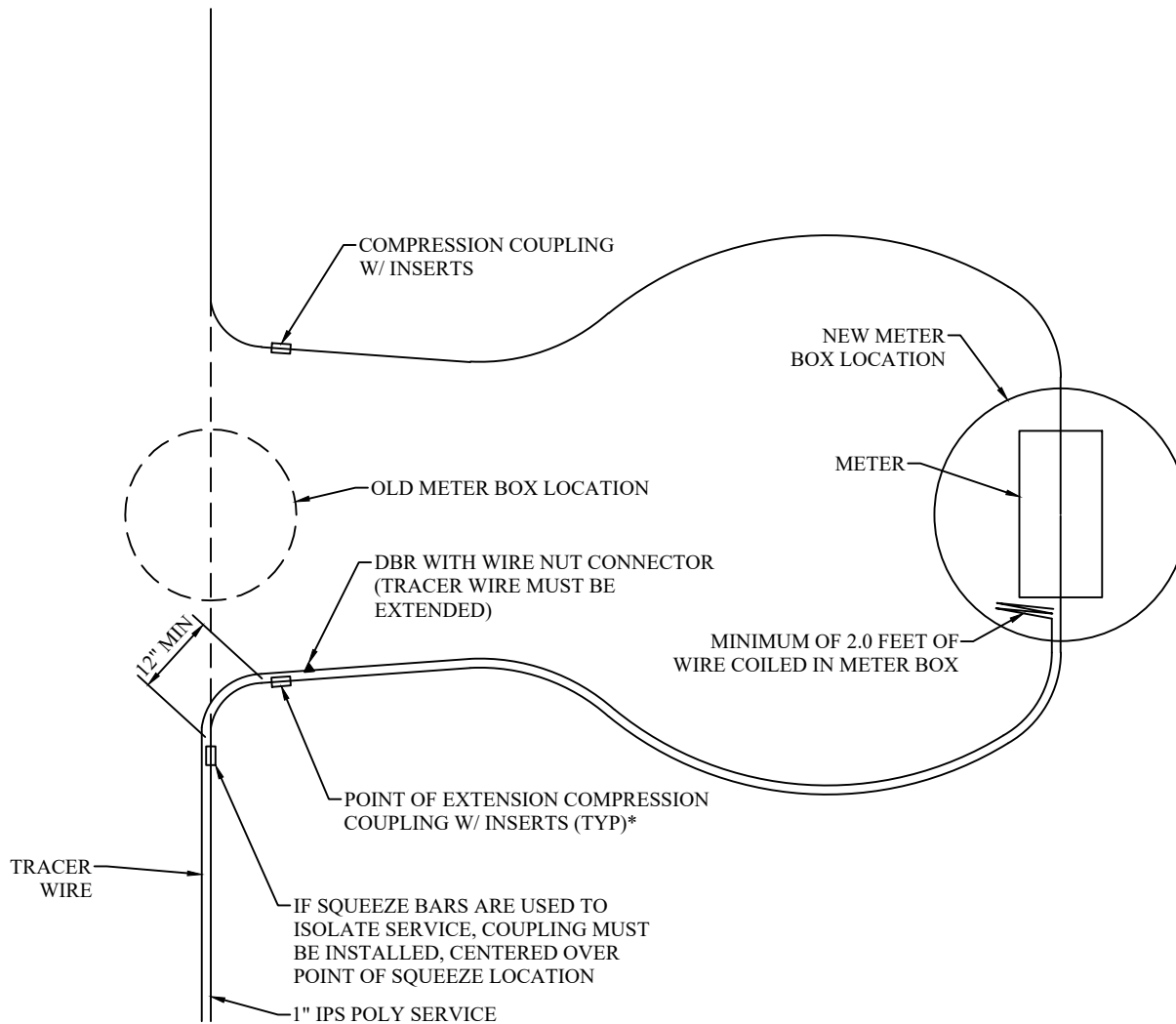


HERRIMAN CITY
ENGINEERING DEPARTMENT
CULINARY WATER

3/4" & 1" WATER METER W/ 1" WATER SERVICE

CW-01A

***REFER TO PARTS LIST ON CW-PL FOR APPROVED PARTS MODELS.**



NOTES:

1. POINT OF CONNECTION MUST BE FRESHLY CUT.
2. CRIMP LOCATION MUST BE MINIMUM OF 12" FROM POINT OF EXTENSION.
3. INSPECTION MUST BE SCHEDULED WITH ENGINEERING DEPARTMENT MINIMUM 48 HOURS IN ADVANCE. (INSPECTION MUST BE MADE BEFORE BACKFILL OF EXCAVATION)
4. ALL CONNECTIONS AND NEW FITTINGS MUST BE SHOT BY G.I.S. DEPARTMENT.

Q:\ENGINEERING\PROJECTS\06 MUNICIPAL\2016-17\1617-03 DEV STDs AND REQ UPDATE\5-UPDATED DELIVERABLE\STANDARD DRAWINGS\CAD\CW-CW-01.DWG

1/9/2021 6:21 PM

NO.	REVISION DESCRIPTION	D-T

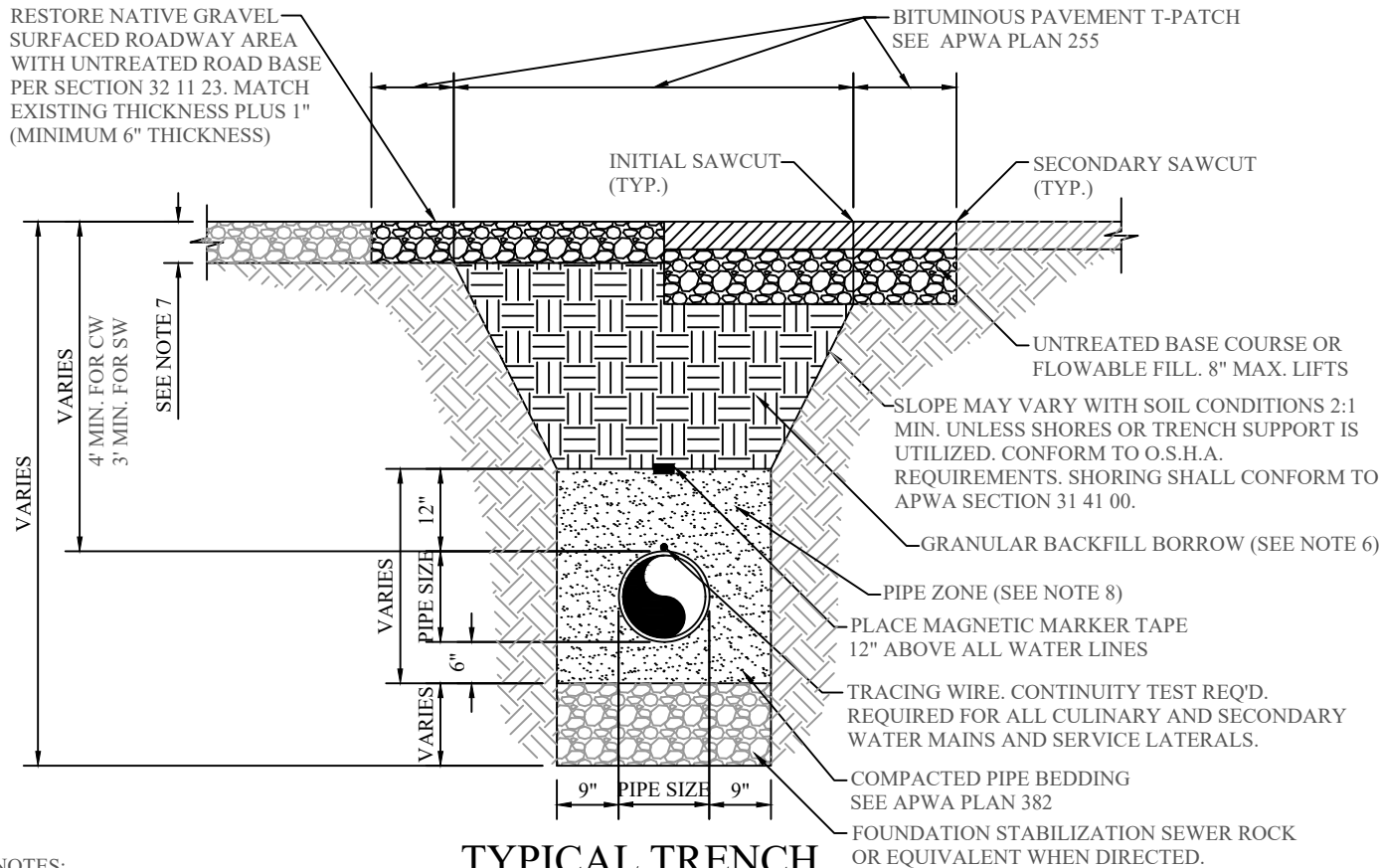
THIS DOCUMENT -NO- ILLUSTRATIONS
HEREON -RE- PROVIDED -S- STANDARD
CONSTRUCTION DETAILS WITHIN HERRIMAN
CITY. DEVIATION FROM THIS DOCUMENT
REQUIRES -PROV- OF HERRIMAN CITY.
HERRIMAN CITY CANNOT BE HELD LI-LE
FOR MISUSE OR CHANGES REGARDING THIS
DOCUMENT.



HERRIMAN CITY
ENGINEERING DEPARTMENT
 CULINARY WATER
 WATER SERVICE RELOCATION

CW-01B

***REFER TO PARTS LIST ON CW-PL FOR APPROVED PARTS MODELS.**



NOTES:

- ADDITIONAL PAVEMENT REMOVAL:** REMOVE ADDITIONAL PAVEMENT TO A PAINTED LANE STRIPE, A LIP OF GUTTER, A CURB, AN EXISTING PAVEMENT PATCH, OR AN EDGE OF PAVEMENT IF SUCH A FEATURE IS WITHIN 2' OF THE SECOND SAW-CUT. IF MORE THAN 50% OF THE PERMANENT SURFACING OF A TRAVELED LANE IS IMPACTED BY THE EXCAVATION, THE ENTIRE LANE WIDTH SHALL BE SAW-CUT, REMOVED, AND REPLACED.
- TACK COAT:** FULL TACK COAT COVERAGE ON ALL VERTICAL SURFACES PER SECTION 32 12 14.
- ASPHALT PAVEMENT:** USE ASPHALT H.M.A SPECIFIED IN SECTION 32 12 05 AND SECTION 32 12 03.
 - INSTALL IN LIFTS NO GREATER THAN 3" AFTER COMPACTION.
 - COMPACT EACH LIFT IN CONFORMANCE WITH SECTION 32 12 03.
 - PLANE OFF SURFACE DISTORTIONS THAT EXCEED 1/4" DEVIATION IN 10'. COAT PLANED SURFACES WITH A CATIONIC OR ANIONIC EMULSION AS APPROVED BY CITY ENGINEER.
 - USE 1/2" GRADATION PER SECTION 32 12 05.
- CRACK SEAL TRENCH JOINTS,** COORDINATE WITH CITY ENGINEERING.
- EQUIPMENT:** ALL ASPHALT PAVEMENT SHALL BE INSTALLED WITH MECHANICAL PAVING EQUIPMENT UNLESS OTHERWISE APPROVED BY THE CITY ENGINEER.
- TRENCH BACKFILL** SHALL CONFORM TO APWA SECTION 33 05 20 "BACKFILLING TRENCHES." SPECIFICALLY SUBSECTION 2.1, "BACKFILL MATERIALS." USE "GRANULAR BACKFILL BORROW" PER APWA SECTION 31 05 13 FOR ALL AREAS UNDER EXISTING, NEW OR FUTURE ROADWAYS OR TRAILS, OTHERWISE BACKFILL SHALL CONFORM TO GRANULAR BORROW (I.E. SUBSECTION 2.2 OF APWA SECTION 31 05 13)
- ASPHALT AND UBC THICKNESS** SHALL BE THE MINIMUM THICKNESS OUTLINED IN HERRIMAN CITY STANDARD, OR ASPHALT AND UBC THICKNESS SHALL BE 1 INCH THICKER THAN THE EXISTING SECTION, WHICHEVER IS MORE STRINGENT.
- PIPE ZONE HAUNCHING AND BACKFILL MATERIAL** SHALL BE SAND PER APWA SECTION 31 05 13. LIFTS AND COMPACTION SHALL BE PER APWA STANDARD PLAN 382.
- JOINT TRENCHING NOT ALLOWED FOR ANY PUBLIC UTILITIES INCLUDING BUT NOT LIMITED TO WATER, SECONDARY WATER, SEWER OR STORM DRAIN.**

5/28/2024 5:17 PM G:\ENGINEERING\STANDARDS\WORKING EDITION\CAD\SECTION 6 STANDARD DRAWINGS\CW-CW-02.DWG

NO.	REVISION DESCRIPTION	DATE
1	2024 STANDARDS UPDATE REVISION	5/23/2024

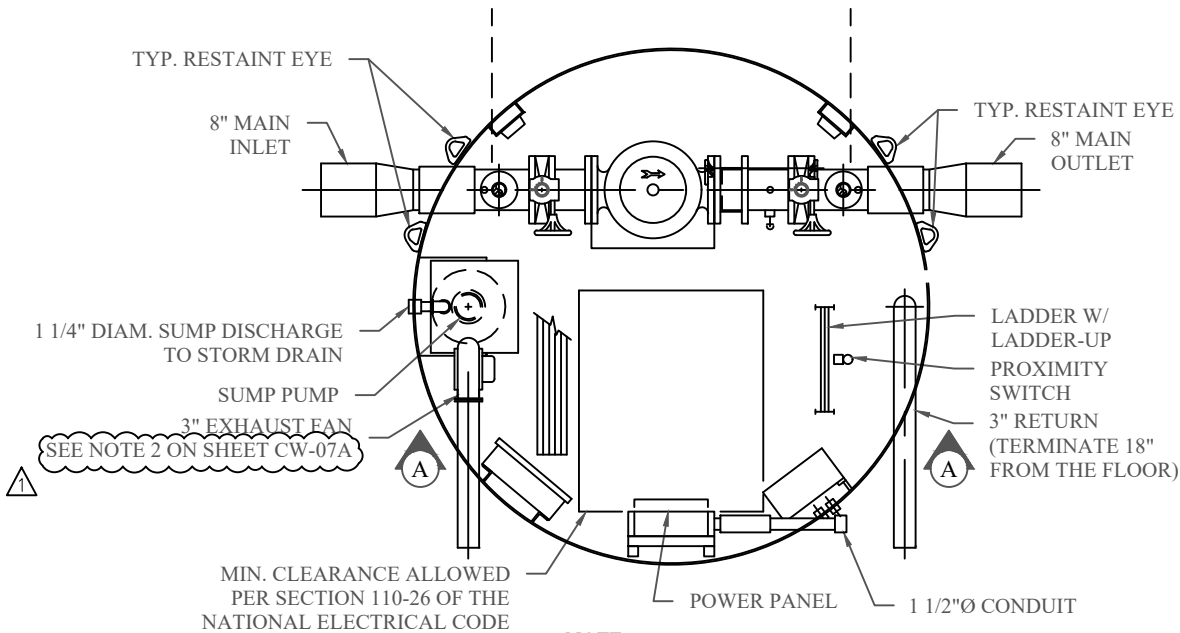
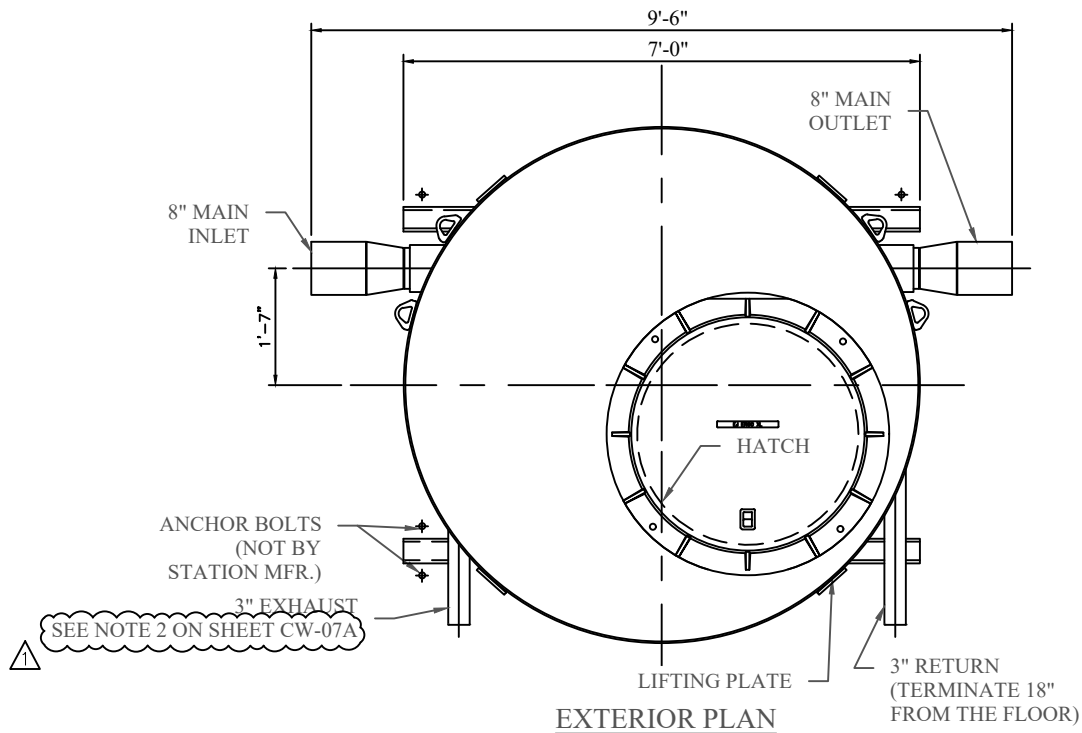
THIS DOCUMENT AND ANY ILLUSTRATIONS HEREON ARE PROVIDED AS STANDARD CONSTRUCTION DETAILS WITHIN HERRIMAN CITY. DEVIATION FROM THIS DOCUMENT REQUIRES APPROVAL OF HERRIMAN CITY. HERRIMAN CITY CANNOT BE HELD LIABLE FOR MISUSE OR CHANGES REGARDING THIS DOCUMENT.



HERRIMAN CITY
ENGINEERING DEPARTMENT
CULINARY WATER
CULINARY AND SECONDARY WATER TRENCH

CW-02

***REFER TO PARTS LIST ON CW-PL FOR APPROVED PARTS MODELS.**



NOTE:
CAPSULE DESIGNED FOR H₂O TRAFFIC LOADING.

GENERAL NOTES:

1. ALL PIPING AND EQUIPMENT SHALL BE ADEQUATELY SUPPORTED AND BRACED
2. CONTRACTOR SHALL CONFORM TO THE MANUFACTURE PRODUCT SUBMITTAL.
3. INLET AND OUTLET PRESSURE SETTINGS SHALL BE VERIFIED WITH HERRIMAN CITY PRIOR TO ORDERING ASSEMBLY.

Q:\ENGINEERING\STANDARDS\CITY STANDARDS\WORKING EDITION\CAD\SECTION 6 STANDARD DRAWINGS\CW-CW-07.DWG

5/24/2024 3:20 PM

NO.	REVISION DESCRIPTION	D-T-E
1	2024 EDITION	5/24/2024

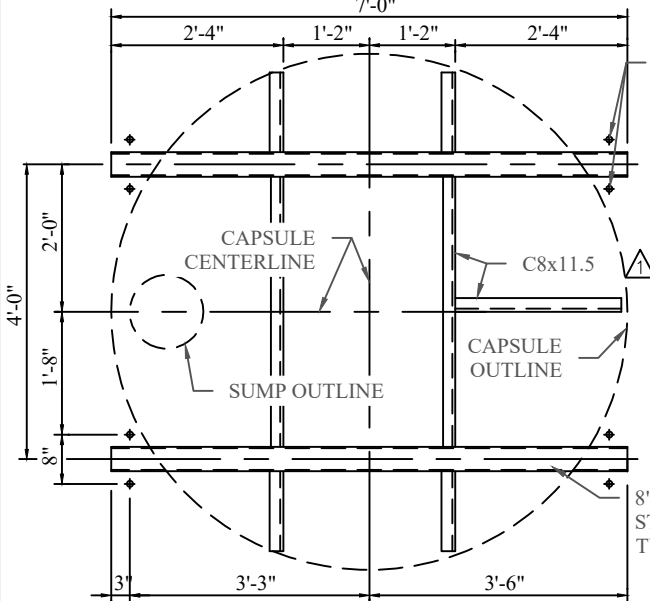
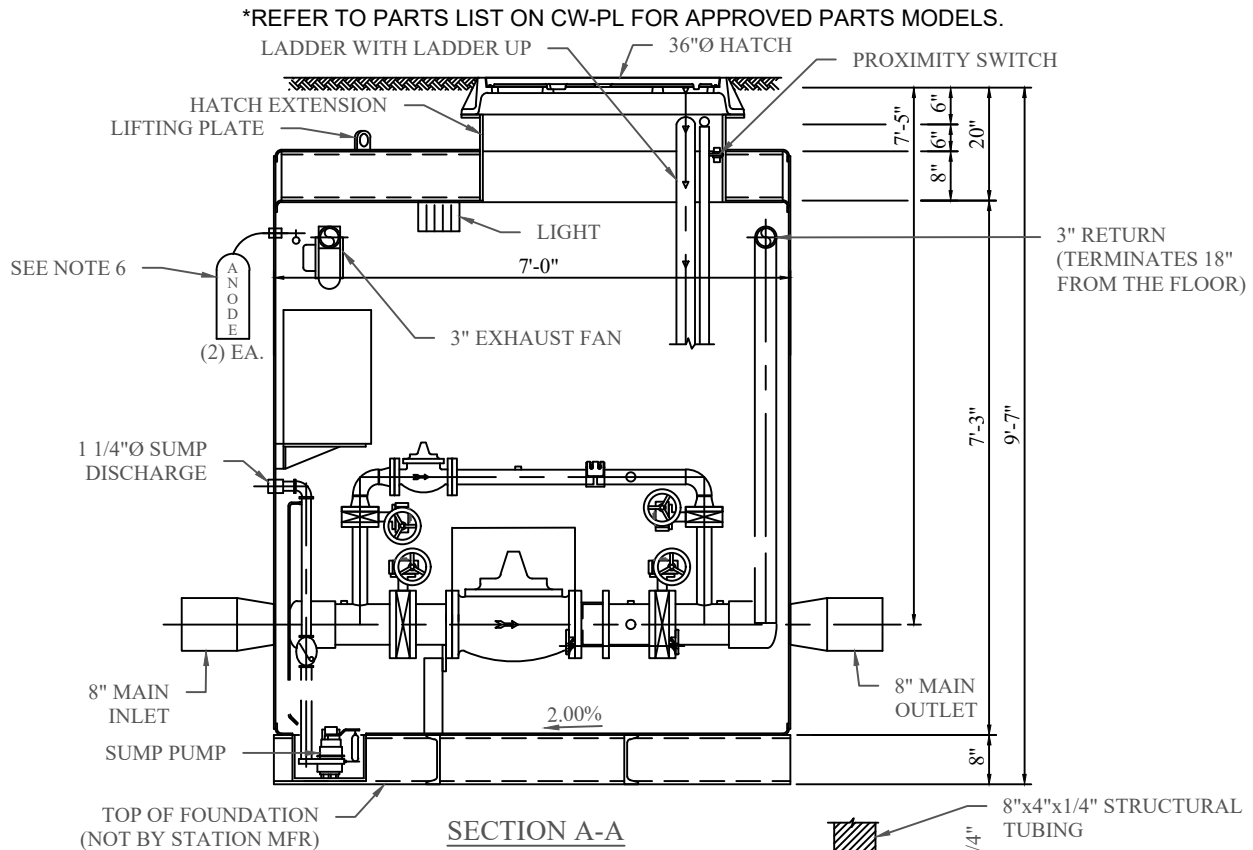
THIS DOCUMENT -ND -NY ILLUSTRATIONS
HEREON -RE PROVIDED -S ST-ND-RD
CONSTRUCTION DET-ILS WITHIN HERRIM-N
CITY. DEVI-TION FROM THIS DOCUMENT
REQUIRES -P-PROV-L OF HERRIM-N CITY.
HERRIM-N CITY C-NNOT BE HELD U-BLE
FOR MISUSE OR CH-NGES REG-RDING THIS
DOCUMENT.



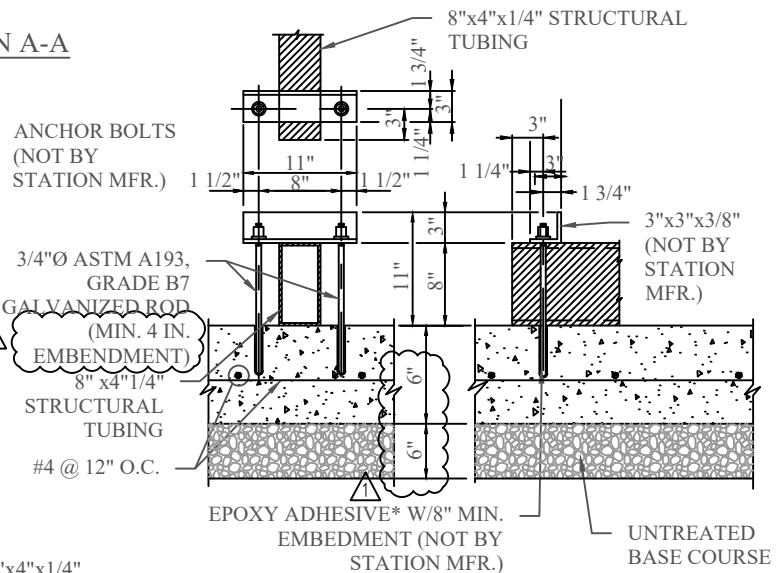
HERRIMAN CITY
ENGINEERING DEPARTMENT
CULINARY WATER
PRESSURE REDUCING VALVE (PRV) EFI STATION

CW-07

6/6/2024 1:04 PM Q:\ENGINEERING\STANDARDS\CITY STANDARDS\WORKING EDITION\CAD\SECTION 6 STANDARD DRAWINGS\CW\CW-07A.DWG



SKID PLAN



TYPICAL ANCHOR DETAIL

NOTES:

- ANCHOR ANGLE, BOLTS, NUTS, & ADHESIVE CAPSULE NOT BY STATION MFR. CONCRETE MUST HAVE A MINIMUM F'_c OF 3500 PSI FOR PROPER ANCHORAGE.
- PAD IS TO BE SIZED TO ACCOMMODATE THE PRV SIZE.

CONTRACTORS NOTES:

- INSTALLING CONTRACTOR PROVIDED EXHAUST AND AIR VENT PIPING SHALL BE GALVANIZED STEEL.
- EXHAUST AND AIR VENT CAPS PROVIDED BY INSTALLING CONTRACTOR, SHALL BE MUSHROOM TYPE (SEE DETAILS CW-09 & CW-09A).
- INSTALLING CONTRACTOR SHALL PROVIDE FULL METER ENCLOSURE (SEE DETAIL SL-12 & SL-12A) FOR METER BASE AND PROVIDE POWER TO METER BASE. PRESSURE REDUCING STATION SHALL BE FULLY FUNCTIONING STATION.
- SUMP PUMP AND DEHUMIDIFIER MUST BE POWERED UP AND TURNED ON IMMEDIATELY AFTER STATION IS INSTALLED.
- VAULT FLOOR IS LEVEL. PAD MUST BE SET AT 2% GRADE TOWARDS DRAIN. DO NOT SHIM STATION. IT IS INTENDED THAT THE MAIN FLOOR MEMBERS BE IN CONTINUOUS CONTACT WITH THE CONCRETE PAD.
- ANODE SHALL BE PLACED WITHIN RIGHT OF WAY BUT OUTSIDE OF ROADWAY (E.G. PARKSTRIP). AN ANODE TEST STATION MUST BE INCLUDED INSPECTION OF ANODE BAGS BY PW INSPECTOR AND WATER DEPARTMENT REQUIRED PRIOR TO BACKFILLING.
- A GROUNDING ROD, SHALL BE CONNECTED TO THE EFI VAULT AND INSTALLED OUTSIDE THE FOOTPRINT OF THE VAULT.

NO.	REVISION DESCRIPTION	DATE
2024 EDITION		12/11/2023

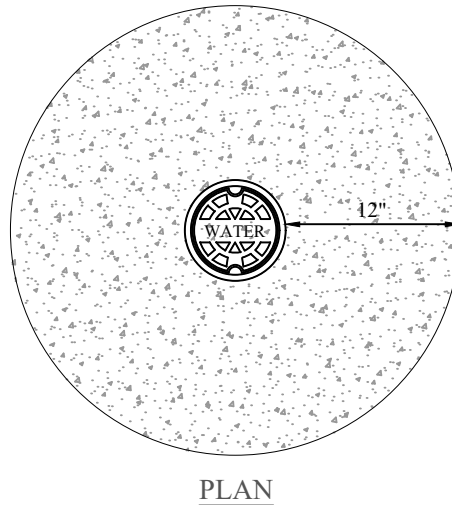
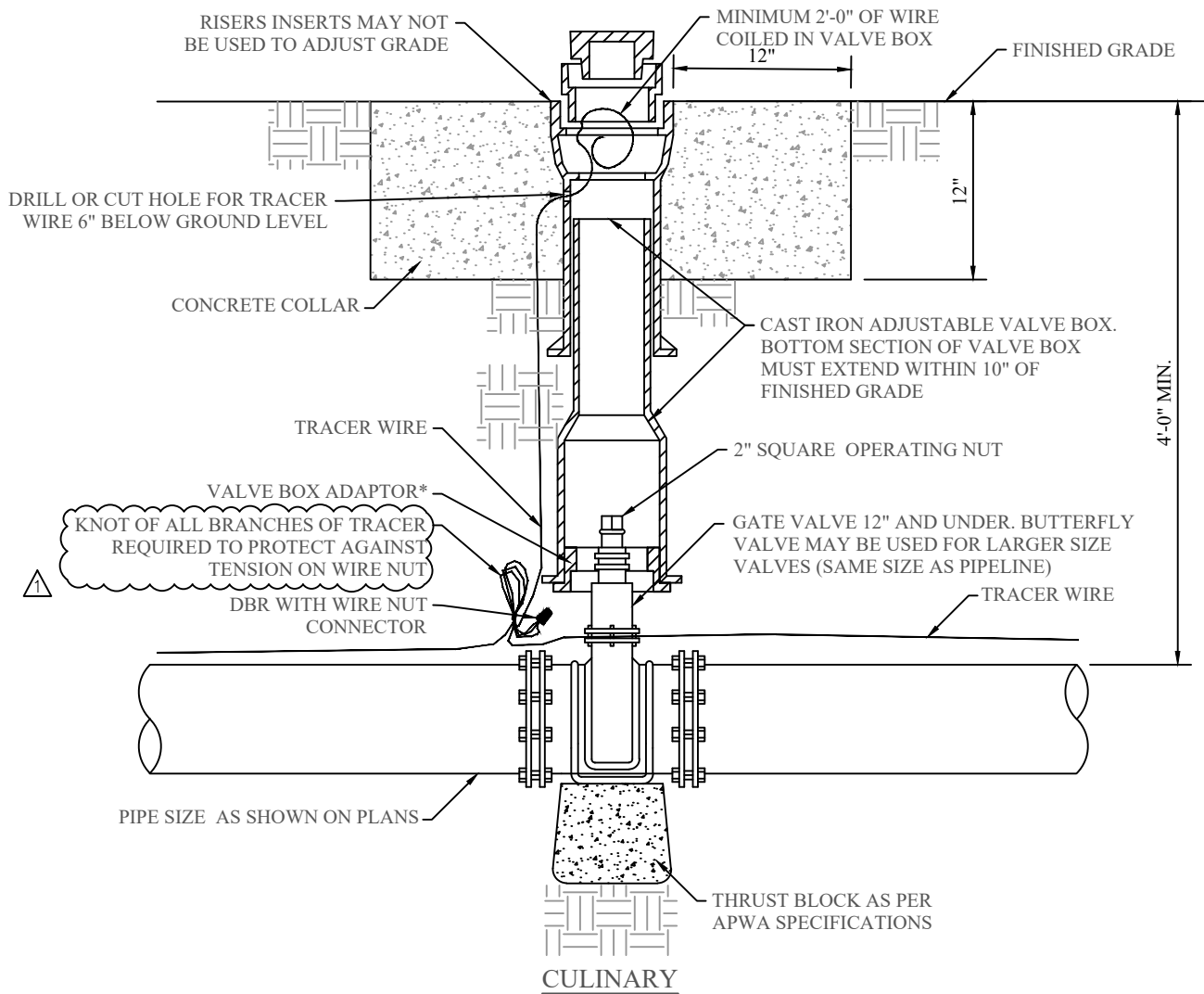
THIS DOCUMENT AND ANY ILLUSTRATIONS HEREON ARE PROVIDED AS STANDARD CONSTRUCTION DETAILS WITHIN HERRIMAN CITY. DEVIATION FROM THIS DOCUMENT REQUIRES APPROVAL OF HERRIMAN CITY. HERRIMAN CITY CANNOT BE HELD LIABLE FOR MISUSE OR CHANGES REGARDING THIS DOCUMENT.



HERRIMAN CITY
ENGINEERING DEPARTMENT
CULINARY WATER
PRESSURE REDUCING VALVE (PRV) EFI STATION

CW-07A

***REFER TO PARTS LIST ON CW-00 FOR APPROVED PARTS MODELS.**



NOTES:

1. VALVE BOX SHALL BE CLEAN, PLUMB AND PROPERLY ALIGNED ON THE VALVE.

Q:\ENGINEERING\STANDARDS\WORKING EDITION\CAD\SECTION 6 STANDARD DRAWINGS\CW\CW-08.DWG

5/28/2024 5:14 PM

2024 EDITION	12/8/2023
NO.	REVISION DESCRIPTION
DATE	

THIS DOCUMENT AND ANY ILLUSTRATIONS HEREON ARE PROVIDED AS STANDARD CONSTRUCTION DETAILS WITHIN HERRIMAN CITY. DEVIATION FROM THIS DOCUMENT REQUIRES APPROVAL OF HERRIMAN CITY. HERRIMAN CITY CANNOT BE HELD LIABLE FOR MISUSE OR CHANGES REGARDING THIS DOCUMENT.



HERRIMAN CITY
ENGINEERING DEPARTMENT
CULINARY WATER
WATER VALVE

CW-08

6/25/2024 3:59 PM Q:\ENGINEERING\STANDARDS\CITY STANDARDS\WORKING EDITION\CAD\SECTION 6 STANDARD DRAWINGS\05 - CW\CW-09.DWG

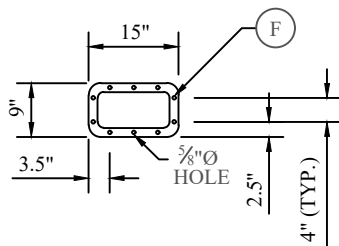
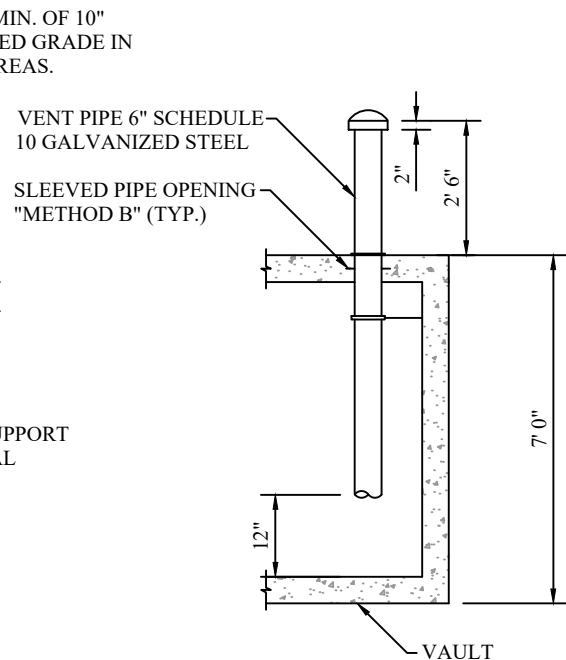
MUSHROOM VENT CAP DETAIL

Diagram illustrating the installation of a vent pipe (VP) and its connection to a sewer line (SL) and a concrete pad (CP).

Labels and Dimensions:

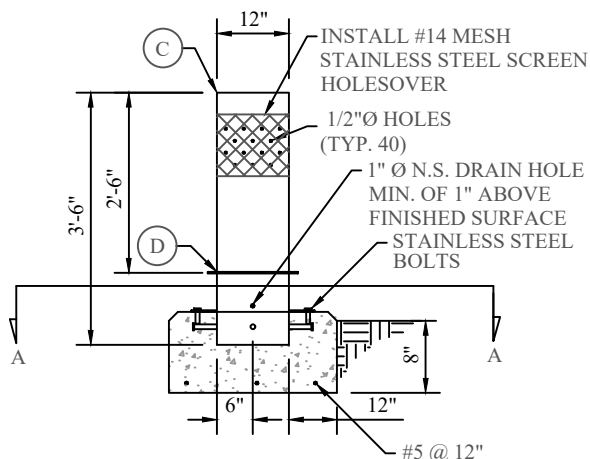
- GALVANIZED STEEL VENT CAP WITH #14 STAINLESS MESH SCREEN (TYP.)
- VENT PIPE 6" SCHEDULE 10 GALVANIZED STEEL
- 3'X3'X4" CONCRETE PAD IF IN PARK STRIP CURB TO SIDEWALK (SEE NOTE 7 FOR PLACEMENT)
- 2" (Vertical dimension from finished grade to top of vent pipe)
- 2'-6" FROM FINISHED GRADE (Horizontal dimension from finished grade to start of vent pipe)
- BURY VAULT MIN. OF BELOW FINISHED GRADE LANDSCAPE AREAS.
- 6" (Vertical dimension from finished grade to top of concrete pad)
- PIPE SUPPORT TYPICAL
- SLEEVED PIPE OPENING "METHOD A" (TYP.)
- VENT 10 GA
- SLEEVE "MET"

1. ALL VAULT PENETRATIONS MUST BE SEALED USING LINK SEAL OR APPROVED EQUAL.




PARTS LIST		
ITEM	QTY	DESCRIPTION
(A)	1	TS 1/4" x 12" x 6" x 2'-6"
(B)	1	TS 1/4" x 12" x 6" x 12"
(C)	1	1/4" PL - 6" x 12"
(D)	2	1/4" PL - 9" x 15"
(E)	4	3/4" DIAM. x 4" H.S.A.
(F)	10	1/2" DIAM. x 3" BREAKAWAY BOLTS

1. SIZE OF VENT COVER CAN VARY DEPENDING ON SIZE OF VENT.
2. OPEN TO AIR- PLACE A NO. 14 MESH S.S. SCREEN OVER THE OPEN END OF PIPE. ATTACH W/S.S. FASTENERS.
3. HOT DIPPED GALVANIZED STEEL STAND PIPE FOR AIR VENT.
4. 1 1/2" MIN. CHAMFER ALL AROUND CONCRETE BASE.
5. 36" CONCRETE BASE FRONT OF WALK TO TOP BACK OF CURB.
6. TOP BACK OF CURB TO VENT PIPE OR VENT COVER SHALL BE A MINIMUM DISTANCE OF 18".



SIDE VIEW A-A
(ITEMS REMOVED FOR CLARITY)

	2024 EDITION	12/11/2023
NO.	REVISION DESCRIPTION	D - TE

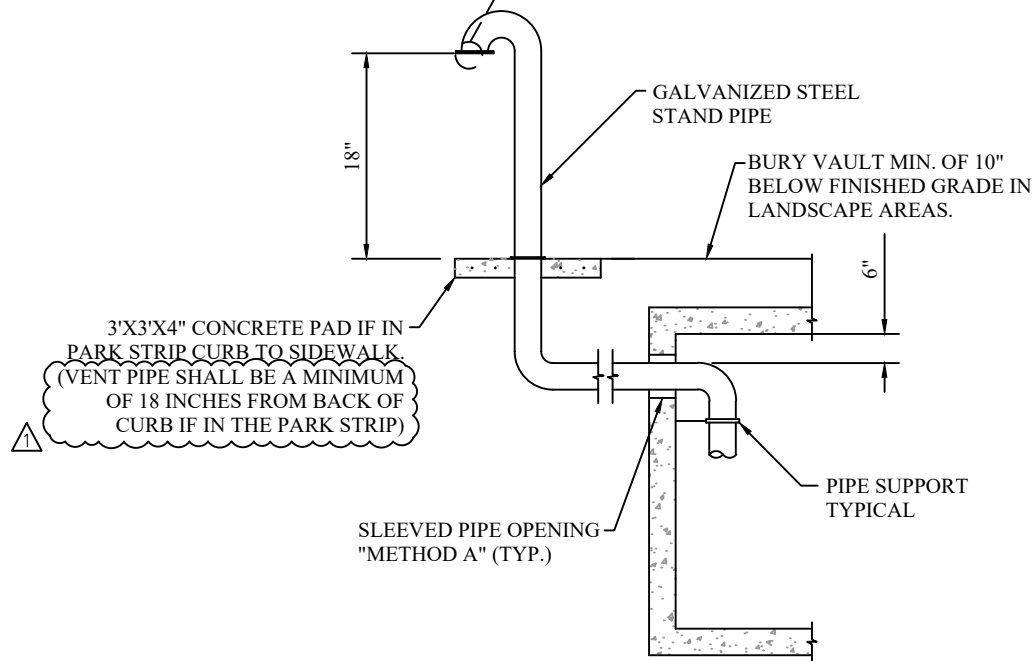
THIS DOCUMENT -ND -NY ILLUSTR-TIONS
HEREON -RE PROVIDED -S ST-ND-RD
CONSTRUCTION DET-ILS WITHIN HERRIM-N
CITY. DEVI-TION FROM THIS DOCUMENT
REQUIRES -PPROV-L OF HERRIM-N CITY.
HERRIM-N CITY C-NNOT BE HELD LI-BLE
FOR MISUSE OR CH-NGES REG-RDING THIS
DOCUMENT




HERRIMAN CITY
ENGINEERING DEPARTMENT
CULINARY WATER
VENT COVER VENT DETAIL

CW-09

12/11/2023 4:40 PM Q:\ENGINEERING\STANDARDS\CITY STANDARDS\WORKING EDITION\CAD\SECTION 6 STANDARD DRAWINGS\CW\CW-09A.DWG



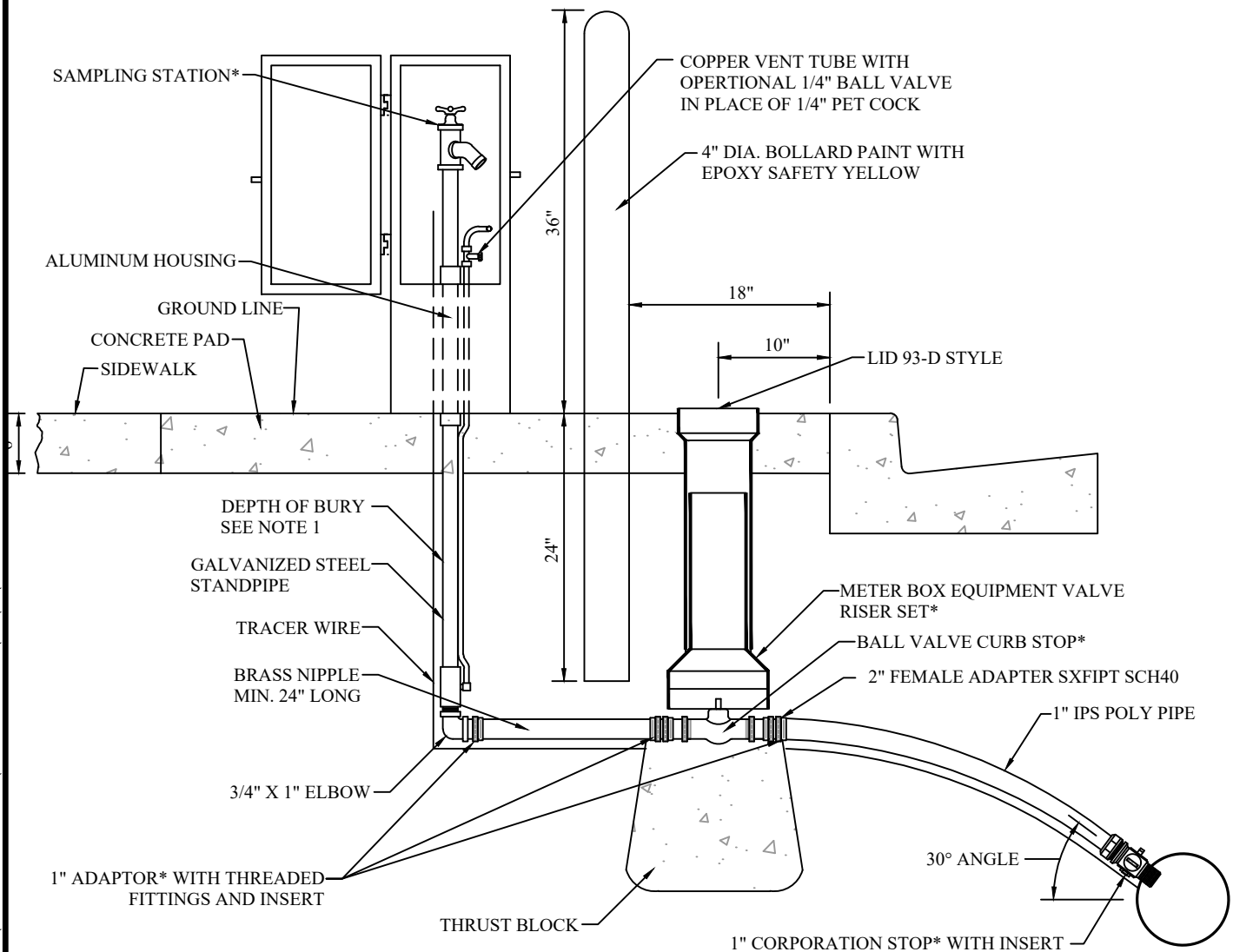
	2024 EDITION	12/11/2023
NO.	REVISION DESCRIPTION	D - TE

THIS DOCUMENT -ND -NY ILLUSTR-TIONS
HEREON -RE PROVIDED -S ST-ND-RD
CONSTRUCTION DET-ILS WITHIN HERRIM-N
CITY. DEVI-TION FROM THIS DOCUMENT
REQUIRES -PPROV-L OF HERRIM-N CITY.
HERRIM-N CITY C-NNOT BE HELD LI-BLE
FOR MISUSE OR CH-NGES REG-RDING THIS
DOCUMENT.



CW-09A

***REFER TO PARTS LIST ON CW-PL FOR APPROVED PARTS MODELS.**



SECTION VIEW

NOTES:

1. SAMPLING STATIONS SHALL BE 4'-0" BURY, WITH A 3/4" FIP INLET, AND A 3/4" UNTHREADED NOZZLE.
2. ALL STATIONS SHALL BE ENCLOSED IN A LOCKABLE, NONREMOVABLE, ALUMINUM- CAST HOUSING.
3. WHEN OPENED, THE STATION SHALL REQUIRE NO KEY FOR OPERATION, AND THE WATER WILL FLOW IN AN ALL BRASS WATERWAY.
4. ALL WORKING PARTS WILL ALSO BE OF BRASS AND BE REMOVABLE FROM ABOVE GROUND WITH NO DIGGING.
5. A COPPER VENT TUBE WILL ENABLE EACH STATION TO BE PUMPED FREE OF STANDING WATER TO PREVENT FREEZING AND TO MINIMIZE BACTERIA GROWTH.
6. ALL DEVELOPERS ARE REQUIRED TO INSTALL A SAMPLING STATION FOR EVERY 80 LOTS OR ONE PER DEVELOPMENT FOR DEVELOPMENTS SMALLER THAN 80 LOTS.

Q:\ENGINEERING\PROJECTS\06 MUNICIPAL\2016-17\1617-03 DEV STDs AND REQ UPDATE\5-UPDATED DELIVERABLE\STANDARD DRAWINGS\CAD\CW\CW-10.DWG

1/9/2021 6:53 PM

NO.	REVISION DESCRIPTION	D-T

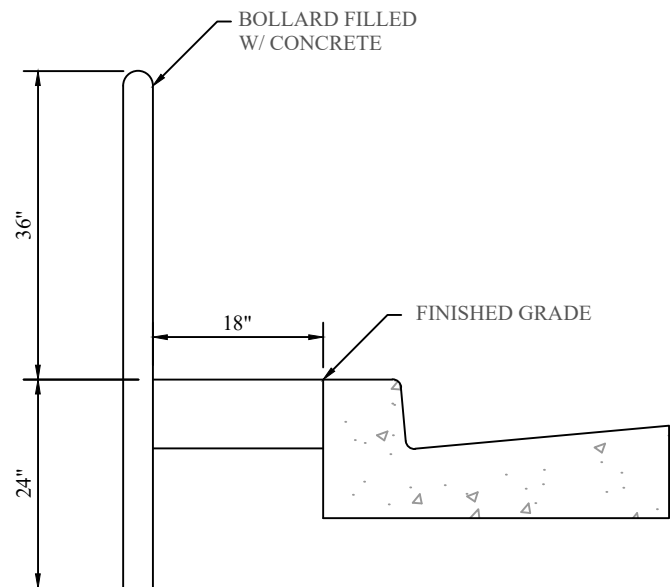
THIS DOCUMENT -NO -NY ILLUSTRATIONS HEREON -RE PROVIDED -S -ST-ND-RD CONSTRUCTION DET-ILS- WITHIN HERRIMAN CITY. DEVI-TION FROM THIS DOCUMENT REQUIRES -PPROV-L OF HERRIMAN CITY. HERRIMAN CITY C-NNOT BE HELD LI-BLE FOR MISUSE OR CH-NGES REG-RDING THIS DOCUMENT.



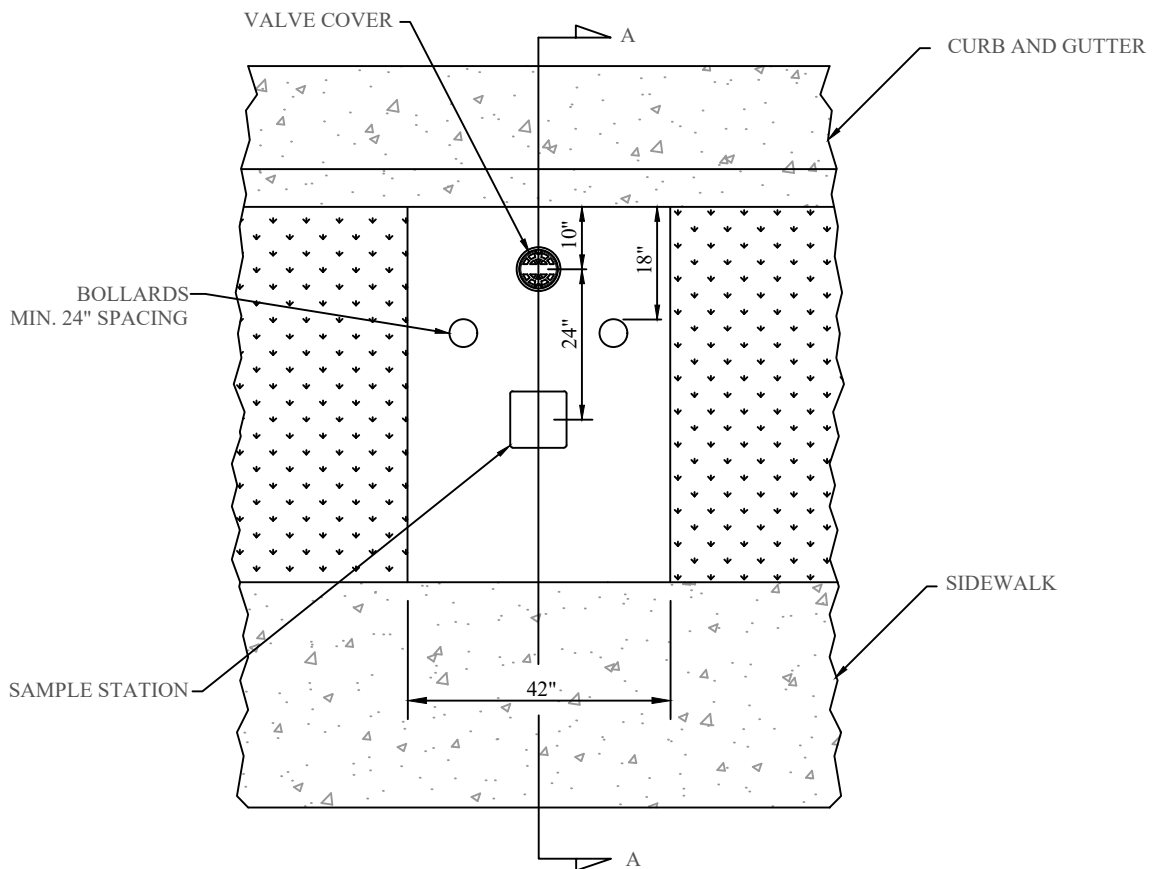
HERRIMAN CITY
ENGINEERING DEPARTMENT
 CULINARY WATER
 SAMPLING STATION

CW-10

***REFER TO PARTS LIST ON CW-PL FOR APPROVED PARTS MODELS.**



SECTION A-A



PLAN VIEW

G:\ENGINEERING\STANDARDS\WORKING EDITION\CAD\SECTION 6 STANDARD DRAWINGS\05 - CW\CW-10A.DWG

6/25/2024 4:01 PM

NO.	REVISION DESCRIPTION	D-T-E

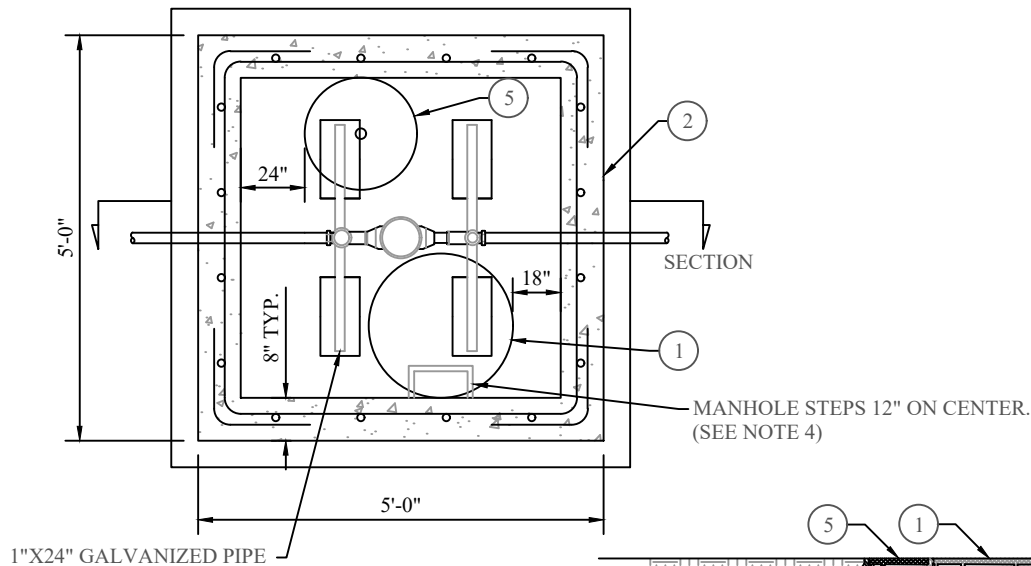
THIS DOCUMENT AND ANY ILLUSTRATIONS HEREON ARE PROVIDED AS STANDARDS FOR CONSTRUCTION DETAILS WITHIN HERRIMAN CITY. DEVIATION FROM THIS DOCUMENT REQUIRES APPROVAL OF HERRIMAN CITY. HERRIMAN CITY CANNOT BE HELD LIABLE FOR MISUSE OR CHANGES REGARDING THIS DOCUMENT.



HERRIMAN CITY
ENGINEERING DEPARTMENT
CULINARY WATER
SAMPLING STATION

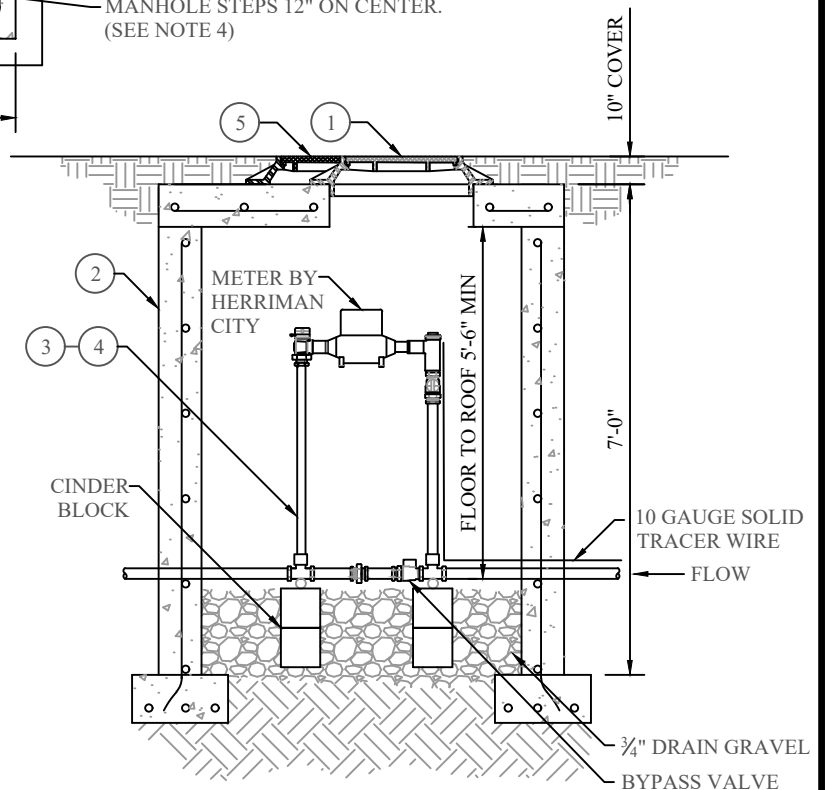
CW-10A

***REFER TO PARTS LIST ON CW-PL FOR APPROVED PARTS MODELS.**



PLAN

LEGEND		
NO.	ITEM	DESCRIPTION
①	30" FRAME & COVER	APWA PLAN NO. 502
②	CONCRETE BOX	APWA PLAN NO. 522
③	1-1/2" CUSTOM SETTER WITH BYPASS	SEE PARTS LIST*
④	2" CUSTOM SETTER WITH BYPASS	SEE PARTS LIST*
⑤	23" FRAME & COVER W/2" HOLE & METER BARREL	SEE CW-01 & CW-01A



SECTION

NOTES:

1. ALL VAULTS THAT REQUIRE MECHANICAL OR ELECTRICAL COMPONENTS SHALL BE EQUIPPED WITH TWO 120 VAC/ GFCI COMMERCIAL GRADE RECEPTACLES WITH WATER TIGHT COVERS, A 100 WATT INCANDESCENT VAPOR TIGHT LED LIGHT FIXTURE WITH PROTECTIVE CAGE, A FRACTIONAL HP HERMETICALLY SEALED EXHAUST FAN TO REMOVE TOTAL AIR VOLUME 30 TIMES PER HOUR, AND ALL CONDUIT SHALL BE RIGID STEEL. THE FAN AND LIGHT SWITCHES SHALL BE LOCATED WITHIN REACH OF THE ENTRANCE. A 100 AMP SERVICE PANEL SHALL BE PROVIDED.
2. WHEN VAULTS ARE LOCATED IN PAVEMENT, TRAFFIC RATED LIDS ARE REQUIRED.
3. ALL 1 1/2" AND 2" METER VAULTS SHALL BE 5' X 5' X 5'-6" AND SHALL HAVE A 30" RING AND LID, 23" STANDARD METER BOX RING AND LID AND STAIRS. ALL VAULTS IN LANDSCAPED AREAS MUST HAVE A MINIMUM OF 10" OF COVER TO FINISHED GRADE.
4. FIRST MANHOLE STEP MUST BE PLACED WITHIN 24" OF FINISHED GRADE.

Q:\ENGINEERING\STANDARDS\WORKING EDITION\CAD\SECTION 6 STANDARD DRAWINGS\05 - CW\CW-11.DWG 6/25/2024 4:15 PM

NO.	REVISION DESCRIPTION	D-T-E

THIS DOCUMENT -NO- ILLUSTRATIONS HEREON -RE- PROVIDED -S- ST-ND-RD CONSTRUCTION DET-ILS- WITHIN HERRIMAN CITY. DEVI-TION FROM THIS DOCUMENT REQUIRES -PPROV-L- OF HERRIMAN CITY. HERRIMAN CITY C-NNOT BE HELD U-BLE FOR MISUSE OR CH-NGES REG-RDING THIS DOCUMENT.

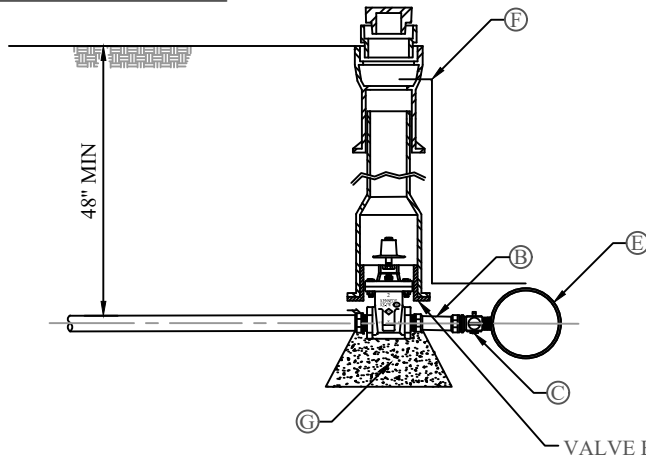


HERRIMAN CITY
ENGINEERING DEPARTMENT
CULINARY WATER
1 1/2" AND 2" METER

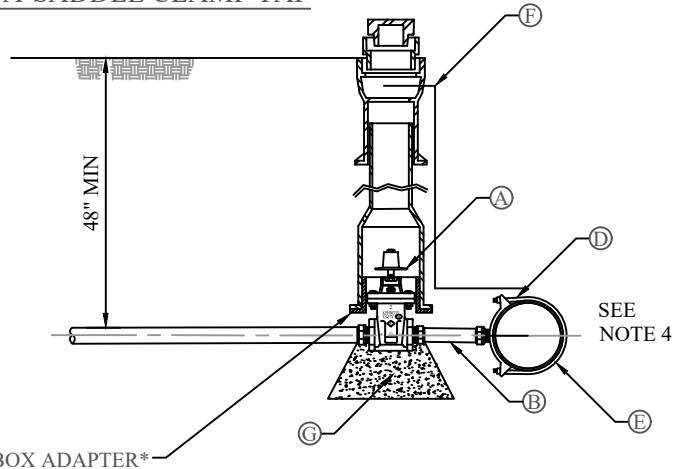
CW-11

***REFER TO PARTS LIST ON CW-PL FOR APPROVED PARTS MODELS.**

TYPE B-DIRECT TAP



TYPE A-SADDLE CLAMP TAP



TYPICAL 1- 1/2" AND 2" SERVICE TAPS

NOTES:

1. ALL FITTINGS SHALL BE COMPRESSION FITTINGS WITH INSERTS.
2. REFER TO CW-08 FOR VALVE BOX DETAILS.

LEGEND		
NO.	ITEM	DESCRIPTION
(A)	GATE VALVE	2"
(B)	BRASS NIPPLE	BRASS NIPPLE. 6" MAX. LENGTH
(C)	1-1/2" OR 2" CORPORATION STOP	SEE PARTS LIST*
(D)	SERVICE SADDLE CLAMP	SEE PARTS LIST*
(E)	WATER MAIN PIPE	SEE NOTE 4
(F)	TRACER WIRE	10G TYPE K (SOFT)
(G)	THRUST BLOCK	

NOTES FOR 1- 1/2" AND 2" SERVICE TAPS:

1. INSPECTION: PRIOR TO BACKFILLING, SECURE INSPECTION OF INSTALLATION BY CITY.
2. BACKFILL: INSTALL AND COMPACT ALL BACKFILL MATERIAL PER APWA SECTION 31 05 20.
3. TAPPING: PLACE TAPS A MIN. 24" APART. USE A TAPPING TOOL WHICH IS SIZED CORRESPONDING TO THE SIZE OF THE SERVICE LINE TO BE INSTALLED. NO TAPS WITHIN 24" OF THE END OF PIPE OR ANY FITTING.
4. PVC PIPE: A SERVICE SADDLE CLAMP IS REQUIRED ON ALL PVC PIPE.
DUCTILE IRON PIPE: DUCTILE IRON PIPE MAY BE DIRECT TAPPED USING CC THREADS.
5. TAPE: TEFLON TAPE IS REQUIRED ON ALL TAPS AND THREADED FITTINGS

NOTES FOR 1 1/2" AND 2" SERVICE LINE:

1. INSPECTION: PRIOR TO BACKFILLING, SECURE INSPECTION OF INSTALLATION BY ENGINEER.
2. BACKFILLING: INSTALL ALL BACKFILL MATERIAL PER APWA SECTION 31 05 20 IN LIFTS NOT EXCEEDING 6" AFTER COMPACTION. COMPACT EACH LIFT TO A MIN. RELATIVE DENSITY OF 95%.
3. METER: HERRIMAN CITY WILL PROVIDE AND INSTALL METER.
4. PIPE: INSTALL IPS POLY PIPE TO 10 FT BACK OF WALK.
5. PLACEMENT:
A) DO NOT INSTALL METER BOX UNDER DRIVEWAY APPROACHES, SIDEWALKS, OR CURB AND GUTTER.
B) IN NEW CONSTRUCTION, INSTALL METER NEAR CENTER OF LOT IN PARKSTRIP.

6/25/2024 4:43 PM Q:\ENGINEERING\STANDARDS\WORKING EDITION\CAD\SECTION 6 STANDARD DRAWINGS\05 - CW\CW-11A.DWG

NO.	REVISION DESCRIPTION	D-T-E
1	2024 ST-ND-RDS UPD-TE REVISION	6/25/2024

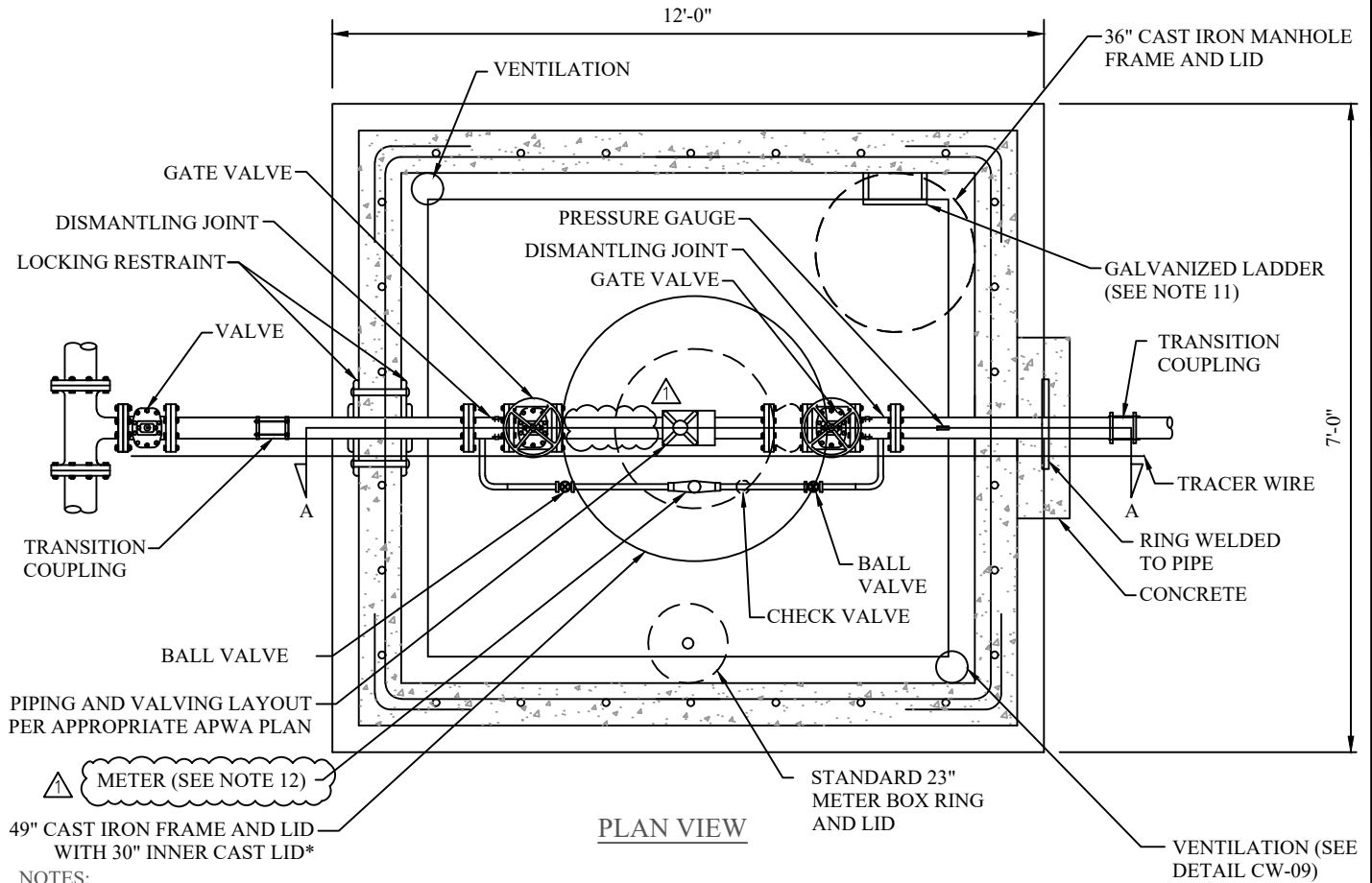
THIS DOCUMENT -NO- -NY ILLUSTRATIONS HEREON -RE- PROVIDED -S ST-ND-RD CONSTRUCTION DET-ILS WITHIN HERRIMAN CITY. DEVI-TION FROM THIS DOCUMENT REQUIRES -PPROV-L OF HERRIMAN CITY. HERRIMAN CITY C-NNOT BE HELD U-BLE FOR MISUSE OR CH-NGES REG-RDING THIS DOCUMENT.



HERRIMAN CITY
ENGINEERING DEPARTMENT
CULINARY WATER
1 1/2" AND 2" METER

CW-11A

***REFER TO PARTS LIST ON CW-PL FOR APPROVED PARTS MODELS.**



NOTES:

1. ALL VAULT PENETRATIONS MUST BE SEALED USING LINK SEAL OR APPROVED EQUAL.
2. METER VAULTS SHALL MEET HERRIMAN CITY STANDARDS 4.10.19
3. ALL 3" AND LARGER METER VAULTS SHALL BE CONSTRUCTED WITH A 2" BY-PASS LINE. THE BY-PASS LINE SHALL HAVE A 2" METER* (2) ISOLATION VALVES, AND A DISMANTLING JOINT. BY-PASS PIPING MUST BE ALL BRASS.
4. THE PIPING AND VALVING LAYOUTS SHALL FOLLOW THOSE FOUND IN THE APWA MANUAL PLAN NO. 523, 525, 527, AND 529. HOWEVER THE HERRIMAN CITY ENGINEER WILL GIVE FINAL APPROVAL OF DESIGN. MAINLINE PIPING SHALL BE D.I.P. TO TRANSITION COUPLINGS.
5. PIPE SUPPORTS* SHALL BE SPACED SUCH THAT THE MAXIMUM SPAN BETWEEN SUPPORTS AND THE WALL IS 6'-0".
6. RESTRAINTS SHALL BE EITHER A LOCKING RESTRAINT OR A THRUST RESTRAINT.
7. 3" METERS AND LARGER SHALL BE PURCHASED AND INSTALLED BY THE DEVELOPER OR CONTRACTOR AND THE CITY WILL INSPECT. METER BRAND AND TYPE MUST BE APPROVED BY CITY.
8. VAULT AND LID- VAULT APWA NO. 505 STANDARD (REBAR)
RATED- PEDESTRIAN H:10
TRAFFIC H:20
9. PAINT ALL BLACK DIP PIPE EPOXY COATED SAFETY BLUE.
10. EPOXY PAINT ALL DIP AND APPURTENANCES IN ACCORDANCE TO SECTION 5.
11. GALVANIZED LADDER MUST BE SECURELY ASTENED TO WALL. TOP RUNG MUST BE WITHINT 24 INCHES OF FINISHED GRADE. BOTTOM RUNG MUST BE WITHIN 12 INCHES OF THE FLOOR. RUNG SPECS: DIAM SHALL EQUAL 3/4 INCHES, 18 INCHES MINIMUM WIDTH AND SHALL MEET OSHA AND ANSI STANDARDS.
12. BYPASS TO BE SIZED BY ENGINEER OF RECORD, MINIMUM SIZE TO BE 2 INCHES.

Q:\ENGINEERING\STANDARDS\CITY STANDARDS\WORKING EDITION\CAD\SECTION 6 STANDARD DRAWINGS\05 - CW-CW-12.DWG

6/25/2024 5:06 PM

2024 EDITION	12/11/2023
NO.	REVISION DESCRIPTION
D-TE	

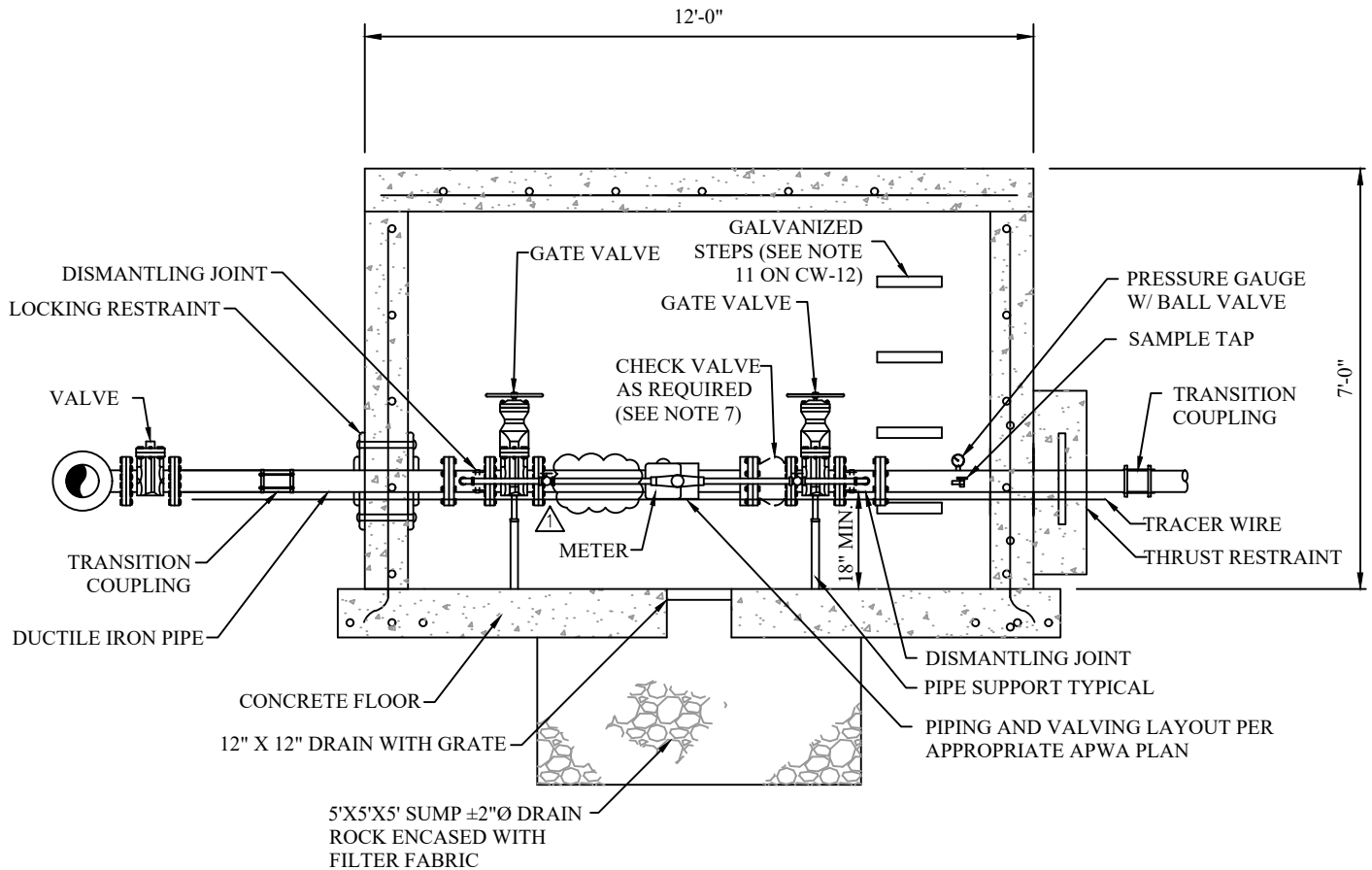
THIS DOCUMENT -NO- ILLUSTRATIONS
HEREON -RE- PROVIDED -S- STANDARD
CONSTRUCTION DET-ILS- WITHIN HERRIMAN
CITY. DEVI-TION FROM THIS DOCUMENT
REQUIRES -PPROV-L- OF HERRIMAN CITY.
HERRIMAN CITY C-NNOT BE HELD U-BLE
FOR MISUSE OR CH-NGES REG-RDING THIS
DOCUMENT.



HERRIMAN CITY
ENGINEERING DEPARTMENT
CULINARY WATER
TYPICAL 3" + METER VAULT

CW-12

***REFER TO PARTS LIST ON CW-PL FOR APPROVED PARTS MODELS.**



SECTION A-A

NOTES:

1. DISMANTLING JOINTS SHALL BE USED ON ALL PIPING BETWEEN ISOLATION GATE VALVES FOR CASE OF MAINTENANCE; PLACEMENT SHALL BE APPROVED BY THE CITY ENGINEER. SEE PARTS LIST FOR APPROVED DISMANTLING JOINTS.
2. ALL VAULTS THAT REQUIRE MECHANICAL OR ELECTRICAL COMPONENTS SHALL BE EQUIPPED WITH TWO 120 VAC/ GFCI COMMERCIAL GRADE RECEPTACLES WITH WATER TIGHT COVERS, A 100 WATT INCANDESCENT VAPOR TIGHT LED LIGHT FIXTURE WITH PROTECTIVE CAGE, A FRACTIONAL HP HERMETICALLY SEALED EXHAUST FAN TO REMOVE TOTAL AIR VOLUME 30 TIMES PER HOUR, AND ALL CONDUIT SHALL BE SCHEDULE 80 PVC. THE FAN AND LIGHT SWITCHES SHALL BE LOCATED WITH ARM'S REACH OF THE ENTRANCE. A 100 AMP SERVICE PANEL SHALL BE PROVIDED.
3. ALL ISOLATION VALVES LOCATED INSIDE VAULTS SHALL BE HAND OPERATED WITH A WHEEL.
4. ALL VAULTS SHALL BE EQUIPPED WITH INTAKE AND EXHAUST VENTS. THE VENTS SHALL BE LOCATED AT OPPOSITE ENDS OF THE VAULT WITH THE INTAKE TERMINATING 12 INCHES FROM THE FLOOR AND THE EXHAUST TERMINATING WITHIN 12 INCHES OF THE CEILING.
5. WHEN VAULTS ARE LOCATED IN PAVEMENT, TRAFFIC RATED LIDS ARE REQUIRED.
6. ALL VAULTS SHALL HAVE 23" STANDARD METER BOX RING AND LID FOR METER READING EQUIPMENT. ALL VAULTS IN LANDSCAPED AREA MUST HAVE A MINIMUM OF 10" OF COVER TO FINISHED GRADE.
7. CHECK VALVE ONLY REQUIRED IF INSTALLED ON A CLOSED SYSTEM IF WATER SYSTEM LOOPING IS REQUIRED, DO NOT INSTALL A CHECK VALVE. CHECK VALVE ON BYPASS REQUIRED IN ALL CASES.



Q:\ENGINEERING\STANDARDS\WORKING EDITION\CAD\SECTION 6 STANDARD DRAWINGS\05 - CW\CW-12A.DWG

6/25/2024 5:11 PM

2024 EDITION	12/11/2023
NO.	REVISION DESCRIPTION
D-TE	

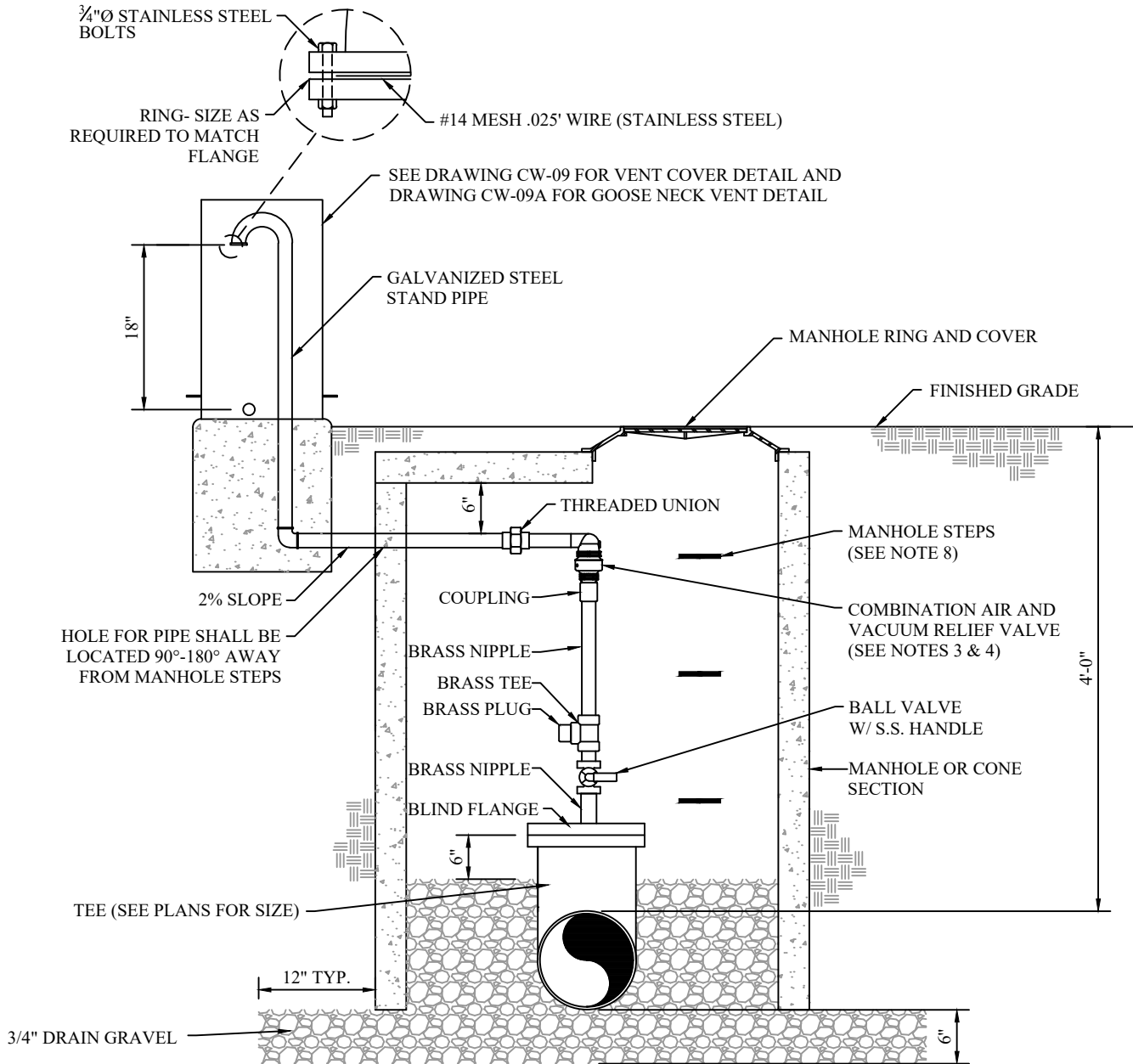
THIS DOCUMENT -NO- ILLUSTRATIONS
HEREON -RE- PROVIDED -S- ST-ND-RO
CONSTRUCTION DET-ILS WITHIN HERRIM-N
CITY. DEVI-TION FROM THIS DOCUMENT
REQUIRES -PPROV-L OF HERRIM-N CITY.
HERRIM-N CITY C-NNOT BE HELD U-BLE
FOR MISUSE OR CH-NGES REG-RDING THIS
DOCUMENT.



HERRIMAN CITY
ENGINEERING DEPARTMENT
CULINARY WATER
TYPICAL 3" + METER VAULT

CW-12A

***REFER TO PARTS LIST ON CW-PL FOR APPROVED PARTS MODELS.**



NOTES:

1. VENT SHALL BE LOCATED IN PARK STRIP OR CITY PROPERTY.
2. SCHEDULE 80 PVC OR POLY PIPE MAY BE USED BETWEEN THREADED UNION AND THE STAND PIPE.
3. SEE PARTS LIST FOR APPROVED COMBINATION AIR VALVES.
4. AIR VALVE SHALL BE SIZED BY PROFESSIONAL ENGINEER OF RECORD. (2 INCH MINIMUM).
5. AIR VACUUM VALVES OR AIR RELEASE VALVES ARE NOT ALLOWED WITHOUT APPROVAL FROM THE CITY ENGINEER.
6. 2" AIR VACUUM RELIEF VALVES MAY USE TAP W/ SADDLE.
7. 4" AIR VACUUM RELEASE VALVES AND LARGER REQUIRE A TEE (MJxMJxFLG).
8. FIRST STEP MUST BE PLACED WITHIN 24 IN. OF FINISHED GRADE. BOTTOM STEP MUST BE WITHIN 12 INCHES OF THE FLOOR

6/25/2024 5:15 PM Q:\ENGINEERING\STANDARDS\CITY STANDARDS\WORKING EDITION\CAD\SECTION 6 STANDARD DRAWINGS\05 - CW\CW-13.DWG

NO.	REVISION DESCRIPTION	DATE

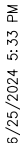
THIS DOCUMENT AND ANY ILLUSTRATIONS HEREON ARE PROVIDED AS STANDARD CONSTRUCTION DETAILS WITHIN HERRIMAN CITY. DEVIATION FROM THIS DOCUMENT REQUIRES APPROVAL OF HERRIMAN CITY. HERRIMAN CITY CANNOT BE HELD LIABLE FOR MISUSE OR CHANGES REGARDING THIS DOCUMENT.




HERRIMAN CITY
ENGINEERING DEPARTMENT
CULINARY WATER
AIR COMBINATION VALVE

CW-13

Q:\ENGINEERING\STANDARDS\CITY STANDARDS\WORKING EDITION\CAD\SECTION 6 STANDARD DRAWINGS\05 - CW\CW-14.DWG



1. INSPECTION: PRIOR TO BACKFILLING AROUND THE ASSEMBLY, SECURE INSPECTION OF INSTALLATION BY ENGINEER.
2. BACKFILL: INSTALL AND COMPACT BACKFILL MATERIAL PER APWA SECTION 31 05 13 IN LIFTS NOT EXCEEDING 6" AFTER COMPACTION. COMPACT EACH LIFT TO A MINIMUM RELATIVE DENSITY OF 95%.
3. WORKING PARTS: ALL WORKING PARTS SHALL BE BRONZE TO BRONZE DESIGN, AND BE SERVICEABLE FROM ABOVE GROUND WITH NO DIGGING.
4. POST HYDRANTS SHALL BE NON- FREEZING, SELF DRAINING TYPE WITH A 36" BURY. HYDRANTS WILL BE FURNISHED WITH A 2" FIP INLET, A NON- TURNING OPERATING ROD, AND SHALL OPEN TO THE LEFT.
5. MAKE SURE TO PLACE THREAD SEALANT ON ALL THREADED CONNECTIONS.
6. INSTALL A GEOTEXTILE WRAP AROUND THE 3/4" DRAIN GRAVEL TO PREVENT SILTING.

	2024 EDITION	12/11/2023
NO.	REVISION DESCRIPTION	D - TE

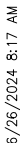
THIS DOCUMENT -ND -NY ILLUSTR-TIONS
HEREON -RE PROVIDED -S ST-ND-RD
CONSTRUCTION DET-ILS WITHIN HERRIM-N
CITY. DEVI-TION FROM THIS DOCUMENT
REQUIRES -PPROV-L OF HERRIM-N CITY.
HERRIM-N CITY C-NNOT BE HELD LI-BLE
FOR MISUSE OR CH-NGES REG-RDING THIS
DOCUMENT




HERRIMAN CITY
ENGINEERING DEPARTMENT
CULINARY WATER
BLOW OFF HYDRANT

CW-14

Q:\ENGINEERING\STANDARDS\CITY STANDARDS\WORKING EDITION\CAD\SECTION 6 STANDARD DRAWINGS\05 - CW\CW-14A.DWG



DRAIN LINE SIZE	MAIN LINE SIZE
2"	8" OR SMALLER
4"	10" TO 16"
6"	LARGER THAN 16"

- | | | |
|---|--------------------------------|----------|
|  | NEW DR -MNG -DDED TO ST-ND-RDS | 6/5/2024 |
| | | |
| | | |
| | | |
| NO. | REVISION DESCRIPTION | D - TE |

THIS DOCUMENT -ND -NY ILLUSTR-TIONS
HEREON -RE PROVIDED -S ST-ND-RD
CONSTRUCTION DET-ILS WITHIN HERRIM-N
CITY. DEVI-TION FROM THIS DOCUMENT
REQUIRES -PPROV-L OF HERRIM-N CITY.
HERRIM-N CITY C-NNOT BE HELD LI-BLE
FOR MISUSE OR CH-NGES REG-RDING THIS
DOCUMENT.




CW-14A

Q:\ENGINEERING\STANDARDS\CITY STANDARDS\WORKING EDITION\CAD\SECTION 6 STANDARD DRAWINGS\05 - CW\CW-15.DWG



1. POLY WRAP HYDRANT TO BURY LINE.
2. DOWELS 6" CENTER OFF BACK OF SIDEWALK AND BACK OF CURB.
3. 3' MINIMUM AWAY, FROM DRIVE APPROACH, MAILBOX, TREE, METER BOX, UTILITY BOX, OR ANY OTHER OBSTRUCTION.
4. INSTALL A GEOTEXTILE WRAP AROUND THE SEWER ROCK TO PREVENT SILTING.

- a) EDGE OF FIRE HYDRANT SHALL BE A MINIMUM DISTANCE OF 6 INCHES FROM THE SIDEWALK EDGE.
- b) FOR RESIDENTIAL: HYDRANT SHALL BE LOCATED WITHIN 2 FT OF A PROPERTY LINE AND SHALL NOT BE WITHIN 5 FT OF A STREETLIGHT, UTILITY BOX, APPURTENANCE, OR ANY OBSTACLES.
- c) FOR COMMERCIAL/INDUSTRIAL: HYDRANT SHALL BE LOCATED IN ISLANDS OR MEDIANS SAFE FROM VEHICLE TRAVEL AND OR PEDESTRIAN TRAVEL WAY (SEE NOTE 5A).
- d) CITY OR PUBLIC HYDRANTS: HYDRANT SHALL BE PLACED WITHIN CITY ROW OR PROVIDE EASEMENT PER WATERLINE EASEMENT REQUIREMENTS (HERRIMAN CITY STANDARDS SECTION 3.04).

	2024 ST-ND-RDS UPD-TE REVISION	5/24/2024
NO.	REVISION DESCRIPTION	D-TE

THIS DOCUMENT -ND -NY ILLUSTR-TIONS
HEREON -RE PROVIDED -S ST-ND-RD
CONSTRUCTION DET-ILS WITHIN HERRIM-N
CITY. DEVI-TION FROM THIS DOCUMENT
REQUIRES -PPROV-L OF HERRIM-N CITY.
HERRIM-N CITY C-NNOT BE HELD LI-BLE
FOR MISUE OR CH-NGES REG-RDING THIS
DOCUMENT.









CW-15

HERRIMAN CITY APPROVED CULINARY WATER EQUIPMENT LIST

EQUIPMENT TYPE

Model

Dismantling Joints	Romac DJ400
Butterfly Valve	M&H Model 4500 "Linesal III" of approved equal
Gate Valves 2 Inches and Larger	Resilient Wedge Seat, Mueller, Clow or approved equal 
Swing Check Valve (2-inch to 24-inch)	Mueller Swing-Type, or approved equal
Globe Check Valve (2-inch to 24-inch)	VAL-MATIC model #VM:1400A/1800-S, or approved equal
Control Valve	CLA-VAL
Underground Packaged Pressure Reducing Station	Per Specification 33 12 18
Combination Valves	A.R.I. D-040
Ball Valve Curb Stop	Ford Ball Valve Curb Stop B11-333NL  Mueller 102883
Combination Air Valve	A.R.I. D-040 or Approved Equal
Valve Box	Tyler 564A Cast Iron, or approved equal
Valve box adaptor	Adaptor Inc. Model VBA-II, Adaptor II Type C 
Service Saddle Clamp	Ford FB 202 B Mueller BR2B Series
Dry-Barrell Fire Hydrant	Mueller Super Centurion 250 Model A-423 Waterous WB67-250 Clow Medallion
2" Blow Off Hydrant	Mainguart No. 78 or Approved Equal Truflow #TF500
Hydrant Lock	As manufactured by Kupferle Foundry Co., St. Louis, MO. or approved Equal
1" Corporation Stop	Type A: Ford-FB 1101-4-Q-NL IPS Saddle Type A: Mueller B-25029N if direct tapped Type B: Ford-FB 1001-4-Q-NL CC threaded  Type B: Mueller B-25009N
3/4" Water Meter Yoke	Mueller 240B2434-2-49N Ford VBHC72-9558102NL  A.Y. McDonald 728-218DWPP
1" Water Meter Yoke	Ford Copper VBHC74-95581-03-NL  A.Y. McDonald 728-218DWPP

G:\ENGINEERING\STANDARDS\CITY STANDARDS\WORKING EDITION\CAD\SECTION 6 STANDARD DRAWINGS\05 - CW\CW-PL.DWG

6/26/2024 7:00 AM

 2024 ST-ND-RDS UPD-TE REVISION	6/4/2024		HERRIMAN CITY ENGINEERING DEPARTMENT CULINARY WATER CULINARY WATER EQUIPMENT LIST (pg 1 of 3)	CW-PL1
THIS DOCUMENT -ND -NY ILLUSTRATIONS HEREON -RE PROVIDED -S ST-ND-RD CONSTRUCTION DET-ILS WITHIN HERRIM-N CITY. DEVI-TION FROM THIS DOCUMENT REQUIRES -PPROV-L OF HERRIM-N CITY. HERRIM-N CITY C-NNOT BE HELD U-BLE FOR MISUSE OR CH-NGES REG-RDING THIS DOCUMENT.				
NO. REVISION DESCRIPTION	D-TE			

HERRIMAN CITY APPROVED CULINARY WATER EQUIPMENT LIST

EQUIPMENT TYPE

Model

1 1/2" Custom Setter with Bypass

Ford VBHH76-18B-11-66-NL

2" Custom Setter with Bypass

Ford VBHH77-18B-11-77-NL

Water Meter

Neptune 5/8" x 3/4" T-10 Meter with AutoDetect register

2" Water Meter

Neptune T-10 Model

3" Water Meter or Larger

Neptune Mach 10

Meter Barrel Frame and Cover (3/4" & 1" Mtr) #

For paved surface applications

Trumbull frame 367-5705, Lid 367-5704 or approved equal.

Meter Barrel Frame and Cover

(1 1/2" and 2" Meters)

Typical Installation

For Landscape ONLY

Concrete box per APWA

36x36 HDPE Corrugated Meter Barrel

Water Meter Pit Adjusting Ring

(For paved surface applications)

30" Barrel: D&L L-2336, 36" Barrel: D&L L-2338

30" Barrel required: B-5024-Ri

Radio Unit

Neptune R900 Pit Meter Interface Unit (MIU) Radio

Sampling Station

Eclipse #88-SS Sampling Station

(Manufactured by Kupferle Foundry, St Louis, MO 63102)

1" Female Adaptor Connection

1" Ford Compression Fitting 1644-Q w/ insert

Mueller compression fittings w/ insert

Ford C16-44QNL or approved equal

1" Female Adaptor

Ford 1644-Q

Mueller H-15429N

1" Compression Coupling with Inserts

Ford - C66-44-NL-Q

Mueller - H-15400N

MJ Water Valve Connection Joint Restraints

EBAA Iron MEGALUG, Tyler TUFGRip, Star Fittings USA

Vent caps

Christy's Vent Caps manufactured by T. Christy Enterprises, Inc.,
Anaheim, CA

49" Cast Iron Frame and Lid
with 30" Inner Cast Lid

D&L Supply DL A-1381 or equal

Pipe supports

Stanchion Saddle MSS Type 37 Grinnell Figure 264 of approved equal

Galvanized ladder

Provide submittal for city review

Epoxy Adhesive

Hilti Hit-RE-500 Epoxy Adhesive

Q:\ENGINEERING\STANDARDS\CITY STANDARDS\WORKING EDITION\CAD\SECTION 6 STANDARD DRAWINGS\05 - CW\CW-PL-DWG

8/1/2025 8:20 AM

2024	ST-ND-RDS UPD-TE REVISION	6/26/2024
NO.	REVISION DESCRIPTION	D-TE

THIS DOCUMENT -ND -NY ILLUSTRATIONS
HEREON -RE PROVIDED -S ST-ND-RD
CONSTRUCTION DET-ILS WITHIN HERRIM-N
CITY. DEVI-TION FROM THIS DOCUMENT
REQUIRES -PPROV-L OF HERRIM-N CITY.
HERRIM-N CITY C-NNOT BE HELD U-BLE
FOR MISUSE OR CH-NGES REG-RDING THIS
DOCUMENT.



HERRIMAN CITY
ENGINEERING DEPARTMENT
CULINARY WATER

CULINARY WATER EQUIPMENT LIST (pg 2 of 3)

CW-PL2

HERRIMAN CITY APPROVED CULINARY WATER EQUIPMENT LIST

EQUIPMENT TYPE	Model
Tapping Sleeves (See Section 33 00 11)	Ford FTSS (SS flanges) OR Romac SST111



Q:\ENGINEERING\STANDARDS\CITY STANDARDS\WORKING EDITION\CAD\SECTION 6 STANDARD DRAWINGS\05 - CW\CW-PL.DWG 6/26/2024 7:10 AM

	2024 ST-ND-RDS UPD-TE REVISION	6/26/2024
NO.	REVISION DESCRIPTION	D-TE

THIS DOCUMENT -ND -NY ILLUSTR-TIONS HEREON -RE PROVIDED -S ST-ND-RD CONSTRUCTION DET-ILS WITHIN HERRIM-N CITY. DEVI-TION FROM THIS DOCUMENT REQUIRES -PPROV-L OF HERRIM-N CITY. HERRIM-N CITY C-NNOT BE HELD LI-BLE FOR MISUSE OR CH-NGES REG-RDING THIS DOCUMENT.



HERRIMAN CITY ENGINEERING DEPARTMENT CULINARY WATER CULINARY WATER EQUIPMENT LIST (pg 3 of 3)
--

CW-PL3