

- ① CONTROLLER ENCLOSURES WITH CONTROLLER – SEE IRRIGATION EQUIPMENT SCHEDULE
- ② 120-VOLT WIRE IN RIGID CONDUIT
- ③ COMMON WIRE (TRADITIONAL WIRING)
- ④ CONTROL WIRES (TRADITIONAL WIRING)
- ⑤ RIGID CONDUIT TO MAIN LINE
- ⑥ FINISHED GRADE
- ⑦ UF DIRECT-BURIAL WIRES TO REMOTE CONTROL VALVES
- ⑧ SUBGRADE COMPACTED TO 95% MDD PER ASTM D-1557
- ⑨ ELECTRICAL PULL BOX (IF REQUIRED)
- ⑩ 3" CONDUIT FOR FUTURE EXPANSION (IF REQUIRED)
- ⑪ SWEEP ELL FITTING

**NOTES:**

1. GROUND ROD OR COPPER GROUND PLATE MIN. 8' AND 12' MAX. AWAY FROM CONTROLLER. REFER TO MANUFACTURER'S RECOMMENDATION FOR GROUNDING EQUIPMENT SIZE AND INSTALLATION.
2. GROUNDING RESISTANCE SHOULD BE MEASURED AT 10 OHMS OR LESS. IF GREATER THAN 10 OHMS, A SECOND GROUNDING ROD OR PLATE MAY BE REQUIRED.
3. ON WALL MOUNTED CONTROLLERS, GROUNDING MAY BE TIED INTO BUILDING GROUNDING SYSTEM WHERE POSSIBLE.
4. IN TWO-WIRE SYSTEMS BOTH THE COMMON WIRE AND THE CONTROL WIRE ARE COMBINED INTO A SINGLE 2-WIRE CABLE.

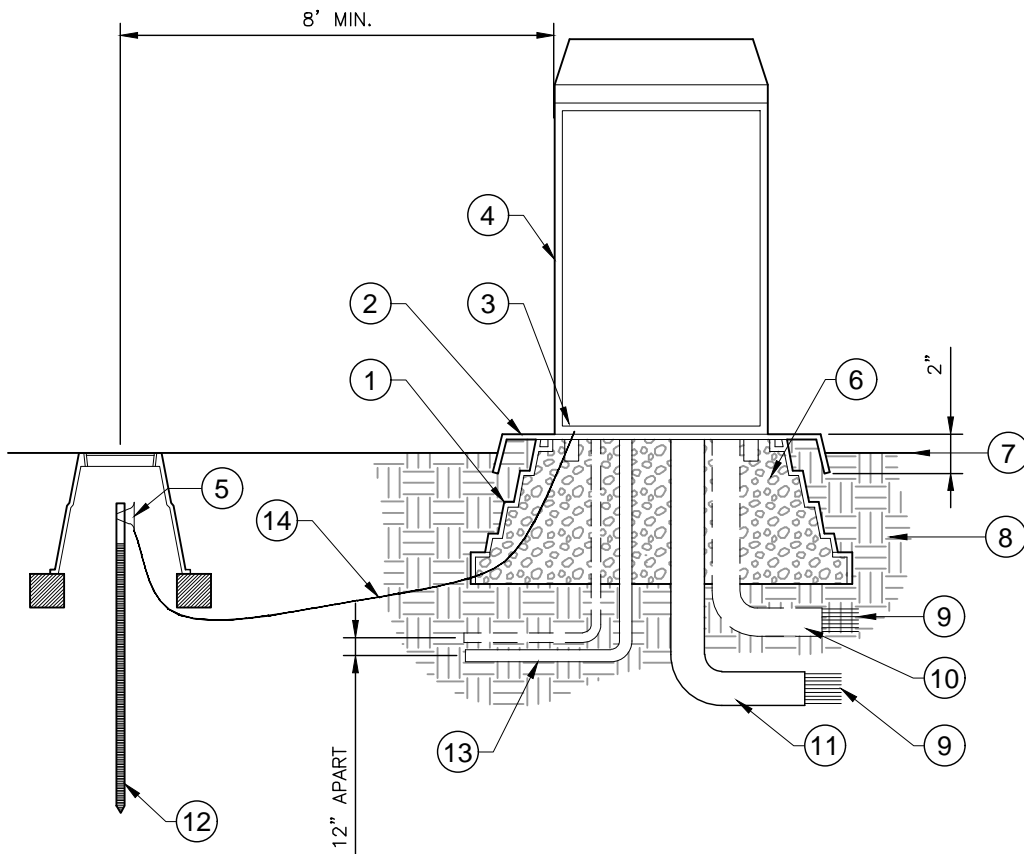
NO.	REVISION DESCRIPTION	D-T-E

THIS DOCUMENT -ND -NY ILLUSTRATIONS HEREON -RE PROVIDED -S ST-ND-RD CONSTRUCTION DET-ILS WITHIN HERRIM-N CITY. DEVI-TION FROM THIS DOCUMENT REQUIRES -P-PROV-L OF HERRIM-N CITY. HERRIM-N CITY C-NNOT BE HELD U-BLE FOR MISUSE OR CH-NGES REG-RDING THIS DOCUMENT.



**HERRIMAN CITY**  
**ENGINEERING DEPARTMENT**  
**IRRIGATION**  
**WALL-MOUNT CONTROLLER**

**IR-01**



- ① PRE-FORMED SUPPORT BASE
- ② QUICKPAD  $\frac{3}{16}$ " MIN. THICKNESS ALUMINUM POWDER COATED PREFORMED PAD
- ③ (2) QUICKPAD FASTENING BRACKET
- ④ CONTROLLER AND CONTROLLER ENCLOSURE – SEE IRRIGATION EQUIPMENT SCHEDULE
- ⑤ CADWELD CLAMP CONNECTED TO CONTROLLER GROUND WIRE
- ⑥ FILL INSIDE BASE WITH PEA GRAVEL
- ⑦ FINISHED GRADE
- ⑧ SUBGRADE COMPACTED TO 90% MDD PER ASTM D-1557
- ⑨ DIRECT BURIAL CONTROL WIRES TO CONTROL VALVES. IN 2-WIRE SYSTEM, PLACE CABLES IN PVC ELECTRICAL CONDUIT.
- ⑩ ADDITIONAL PVC CONDUIT W/ SWEEP ELL – AS NEEDED (TRADITIONAL WIRING)
- ⑪ 2" PVC CONDUIT W/ SWEEP ELL – MAX. 40 14 AWG WIRES (TRADITIONAL WIRING)
- ⑫  $\frac{5}{8}$ " X 8' COPPER CLAD GROUND ROD INSTALL GROUNDING PER MANUFACTURER'S RECOMMENDATIONS.
- ⑬ 120 – VOLT SERVICE IN CONDUIT
- ⑭ 8 AWG BARE SOLID COPPER WIRE

**NOTES:**

1. GROUND ROD OR COPPER GROUND PLATE MIN. 8' AND 12' MAX. AWAY FROM CONTROLLER. REFER TO MANUFACTURER'S RECOMMENDATION FOR GROUNDING EQUIPMENT SIZE AND INSTALLATION.
2. GROUNDING RESISTANCE SHOULD BE MEASURED AT 10 OHMS OR LESS. IF GREATER THAN 10 OHMS, A SECOND GROUNDING ROD OR PLATE MAY BE REQUIRED.
3. IN TWO-WIRE SYSTEMS BOTH THE COMMON WIRE AND THE CONTROL WIRE ARE COMBINED INTO A SINGLE 2-WIRE CABLE.
4. QUICKPAD MAY BE REPLACED WITH 6" THICK CONCRETE PAD. CONCRETE PAD DIMENSIONS SHALL BE 6" LARGER ON ALL SIDES THAN THE FOOTPRINT OF CONTROL BOX.

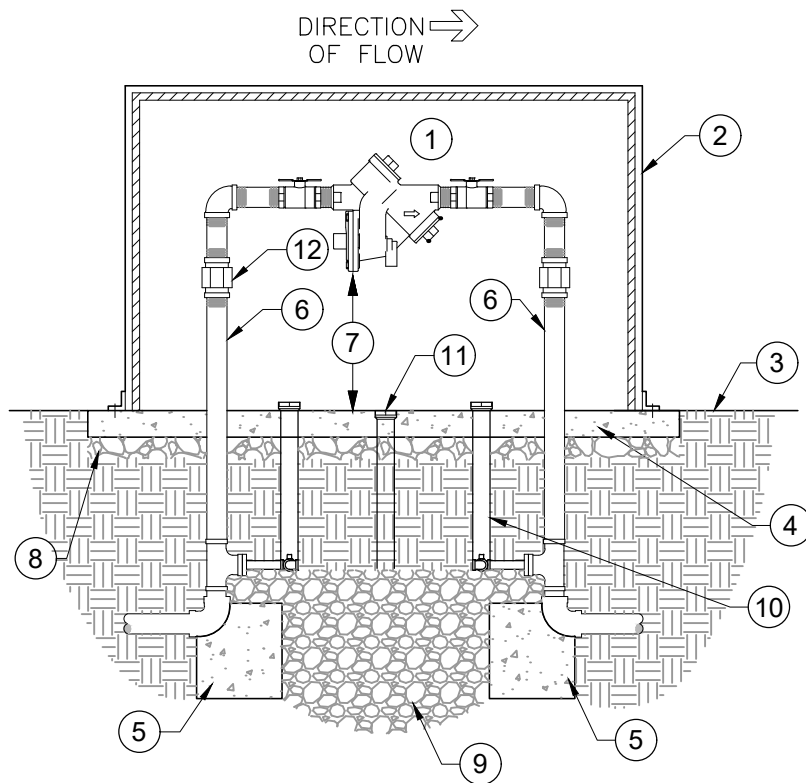
NO.	REVISION DESCRIPTION	D-T-E

THIS DOCUMENT -NO- ILLUSTRATIONS HEREON -RE-PROVIDED- AS ST-ND-RD CONSTRUCTION DET-ILS WITHIN HERRIM-N CITY. DEVI-TION FROM THIS DOCUMENT REQUIRES -PPROV-L OF HERRIM-N CITY. HERRIM-N CITY C-NNOT BE HELD LI-BLE FOR MISUSE OR CH-NGES REG-RDING THIS DOCUMENT.



**HERRIMAN CITY**  
**ENGINEERING DEPARTMENT**  
**IRRIGATION**  
**PEDESTAL-MOUNT CONTROLLER**

**IR-02**



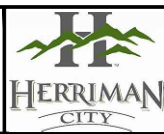
**NOTES:**

1. ALL FITTINGS SHALL BE BRASS. FITTINGS ON THE DOWNSTREAM SIDE OF THE BACKFLOW PREVENTER SHALL MIRROR THOSE ON THE UPSTREAM SIDE.
2. FLANGED BACKFLOW PREVENTERS (REGARDLESS OF SIZE) DO NOT REQUIRE UNIONS.

- ① REDUCED PRESSURE BACKFLOW PREVENTION DEVICE WITH TWO (2) BRASS BALL VALVES – SEE IRRIGATION EQUIPMENT SCHEDULE FOR TYPE AND SIZE
- ② BACKFLOW ENCLOSURE – SEE IRRIGATION EQUIPMENT SCHEDULE (INSTALL PER MANUFACTURER'S SPECIFICATIONS)
- ③ FINISHED GRADE
- ④ 4" THICK CONCRETE PAD (SIZE AS REQUIRED, EXTEND 6" BEYOND OUTSIDE DIMENSIONS OF ENCLOSURE)
- ⑤ CONCRETE THRUST BLOCK
- ⑥ THREADED BRASS SPOOL (TYP.) – SIZE AND LENGTH AS REQUIRED
- ⑦ 12" MIN. 30" MAX.
- ⑧ 4" MIN. DEPTH ROAD BASE COMPACTED TO 95% MDD PER ASTM D-1557
- ⑨ 3/4" CRUSHED SEWER ROCK SUMP 18" DEEP AND EXTEND TO GALVANIZED TEES. WRAP ENTIRE SUMP WITH GEOTEXTILE FABRIC.
- ⑩ MANUAL DRAIN VALVE – SEE EQUIPMENT LIST AND MANUAL DRAIN VALVE DETAIL FOR MORE INFORMATION.
- ⑪ DRAIN OUTLET – 4" DRAIN GRATE WITH 4" PVC PIPE PLUMBED TO GRAVEL SUMP.
- ⑫ BRASS UNION (TYP.)

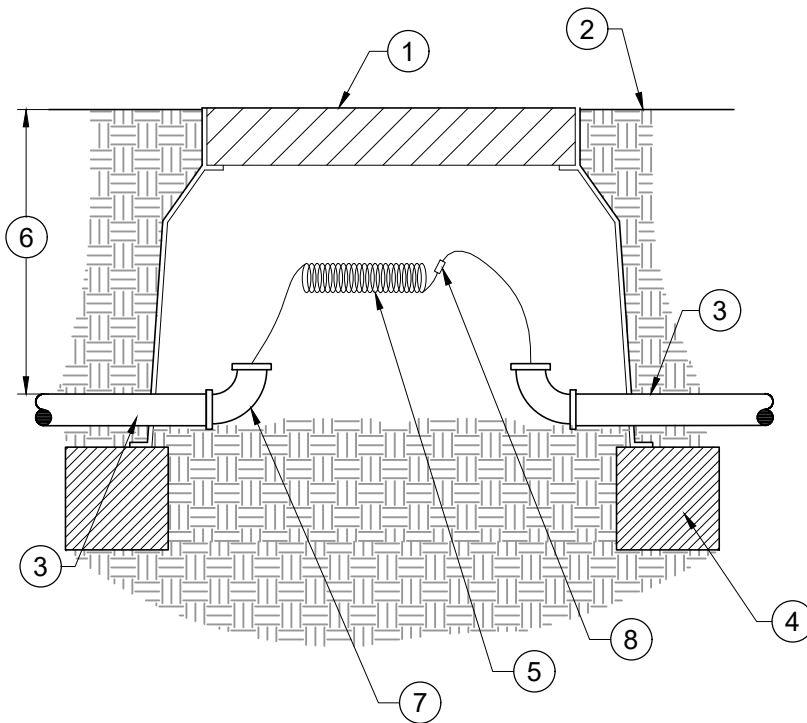
NO.	REVISION DESCRIPTION	DATE

THIS DOCUMENT AND ANY ILLUSTRATIONS HEREON ARE PROVIDED AS STANDARD CONSTRUCTION DETAILS WITHIN HERRIMAN CITY. DEVIATION FROM THIS DOCUMENT REQUIRES APPROVAL OF HERRIMAN CITY. HERRIMAN CITY CANNOT BE HELD LIABLE FOR MISUSE OR CHANGES REGARDING THIS DOCUMENT.



**HERRIMAN CITY**  
**ENGINEERING DEPARTMENT**  
**IRRIGATION**  
**REDUCED PRESSURE BACKFLOW ASSEMBLY**

**IR-03**



- ① FIBRELYTE COMPOSITE IRRIGATION BOX OR APPROVED EQUAL IN CONCRETE ONLY. STANDARD 10" GREEN PLASTIC BOX IN LANDSCAPE AREAS.
- ② FINISHED GRADE — PAVED AREA
- ③ SCH. 40 PVC SLEEVE (SEE IRRIGATION PLANS FOR SIZE)
- ④ 4"x4" TREATED TIMBER FRAME
- ⑤ 2' EXCESS COILED WIRE
- ⑥ DEPTH — 18-24" MIN.
- ⑦ SWEEP ELL (TYP.)
- ⑧ 3M DBR/Y DRY CONNECTION SPLICE IF REQUIRED

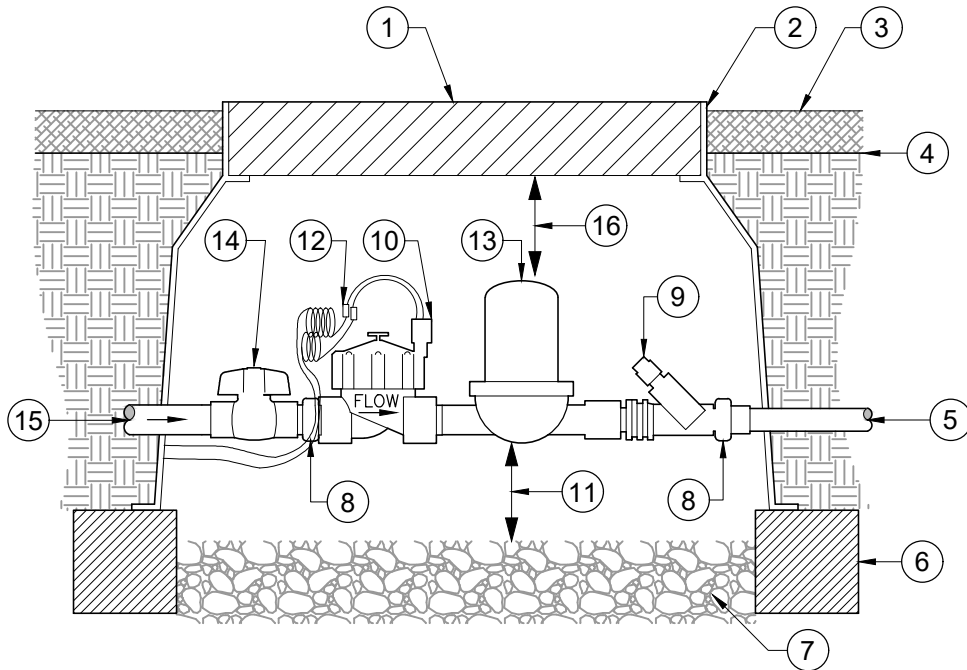
NO.	REVISION DESCRIPTION	D-T-E

THIS DOCUMENT -ND -NY ILLUSTR-TIONS HEREON -RE PROVIDED -S ST-ND-RD CONSTRUCTION DET-ILS WITHIN HERRIM-N CITY. DEVI-TION FROM THIS DOCUMENT REQUIRES -PPROV-L OF HERRIM-N CITY. HERRIM-N CITY C-NNOT BE HELD LI-BLE FOR MISUSE OR CH-NGES REG-RDING THIS DOCUMENT.



**HERRIMAN CITY**  
**ENGINEERING DEPARTMENT**  
**IRRIGATION**  
**IRRIGATION CONTROL WIRE PULL BOX**

**IR-04**



- ① 18" JUMBO GREEN PLASTIC VALVE BOX W/ BOLT LOCK (CARSON OR APPROVED EQUAL)
- ② FLUSH WITH PLANTING BED FINISH SURFACE
- ③ PLANTING BED MULCH – SEE PLANTING PLANS FOR DEPTH AND MATERIAL
- ④ FINISHED GRADE
- ⑤ TO PVC SUPPLY HEADER
- ⑥ 4"x4" TREATED TIMBER FRAME
- ⑦ 4" MIN.  $\frac{3}{4}$ " SEWER ROCK
- ⑧ ACTION UNION – PART 18010-XX, PART 18011-XX, PART 18012
- ⑨ INLINE PRESSURE REGULATOR
- ⑩ ELECTRIC CONTROL VALVE – SEE IRRIGATION EQUIPMENT SCHEDULE
- ⑪ 4" MIN. CLEARANCE
- ⑫ (2) 3M DBR/Y WATER TIGHT WIRE CONNECTORS. COIL SPARE WIRE 2'
- ⑬ INLINE FILTER
- ⑭ PLASTIC PVC BALL VALVE (LINE SIZE)
- ⑮ FLOW FROM PVC MAIN LINE
- ⑯ 2" FROM BOTTOM OF VALVE BOX LID TO TALLEST HARDWARE INSIDE

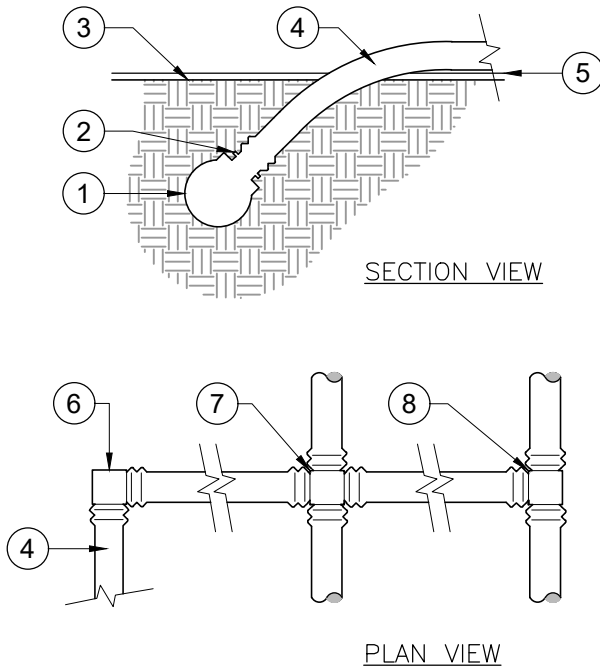
NO.	REVISION DESCRIPTION	DATE

THIS DOCUMENT AND ANY ILLUSTRATIONS HEREON ARE PROVIDED AS STANDARD CONSTRUCTION DETAILS WITHIN HERRIMAN CITY. DEVIATION FROM THIS DOCUMENT REQUIRES APPROVAL OF HERRIMAN CITY. HERRIMAN CITY CANNOT BE HELD LIABLE FOR MISUSE OR CHANGES REGARDING THIS DOCUMENT.



**HERRIMAN CITY**  
**ENGINEERING DEPARTMENT**  
**IRRIGATION**  
**DRIP ZONE CONTROL VALVE ASSEMBLY**

**IR-05**



- ① 1 1/2" PVC HEADER
- ② NETAFIM TLIAPVC CONNECTION
- ③ PLANTING BED FINISHED GRADE
- ④ DRIPLINE / BLANK TUBING
- ⑤ WEED BARRIER FABRIC
- ⑥ ELBOW
- ⑦ CROSS
- ⑧ TEE

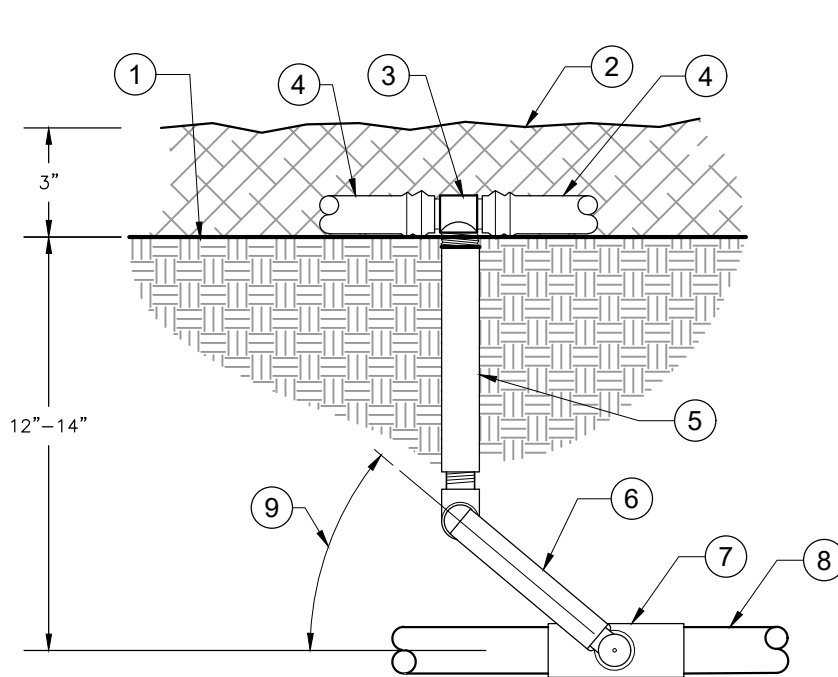
NO.	REVISION DESCRIPTION	D-T-E

THIS DOCUMENT -ND -NY ILLUSTR-TIONS HEREON -RE PROVIDED -S ST-ND-RD CONSTRUCTION DET-ILS WITHIN HERRIM-N CITY. DEVI-TION FROM THIS DOCUMENT REQUIRES -PPROV-L OF HERRIM-N CITY. HERRIM-N CITY C-NNOT BE HELD U-BLE FOR MISUSE OR CH-NGES REG-RDING THIS DOCUMENT.



**HERRIMAN CITY**  
**ENGINEERING DEPARTMENT**  
 IRRIGATION  
 DRIPLINE CONNECTIONS

**IR-06**



- ① FINISHED GRADE
- ② BARK MULCH 3" DEPTH
- ③ COMBINATION TEE INS X INS X 3/4" FPT MODEL: TL075FTEE
- ④ TECHLINE CV DRIPLINE (SEE PLANS FOR EMMITER SIZE AND SPACING)
- ⑤ 3/4" PVC MPT THREADED TOE NIPPLE RISER
- ⑥ LASCO UNITIZED SWING JOINT OR SPEARS SWING JOINT RISER ASSEMBLY; 6" IN LENGTH
- ⑦ PVC SCHEDULE 40 SXSXT TEE
- ⑧ PVC LATERAL LINE, SIZE AS NOTED ON PLAN
- ⑨ SWING JOINT ARM INSTALLED AT ANGLE BETWEEN 20 AND 45 DEG. OF LATERAL PIPE

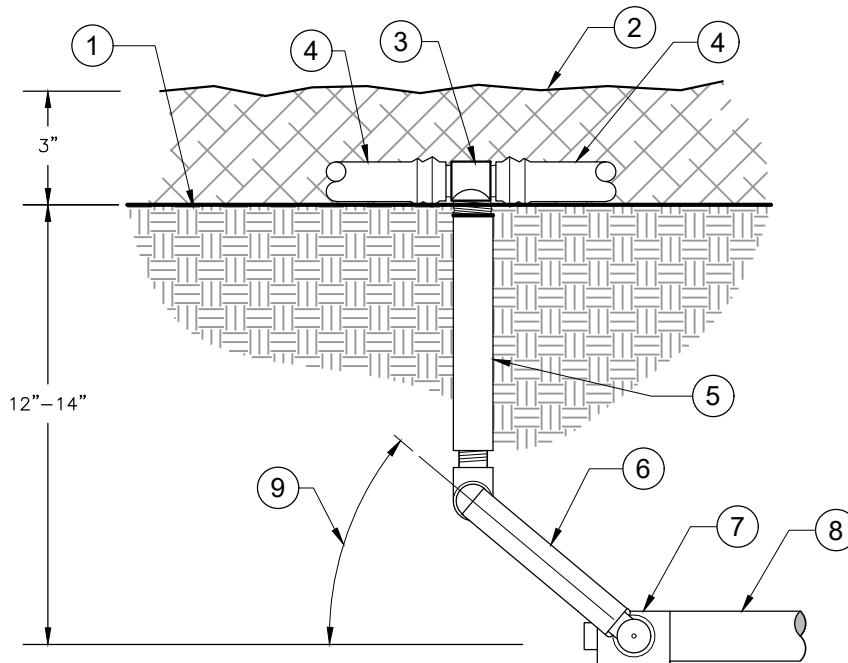
NO.	REVISION DESCRIPTION	D-T

THIS DOCUMENT -ND -NY ILLUSTR-TIONS HEREON -RE PROVIDED -S -ST-ND-RD CONSTRUCTION DET-ILS WITHIN HERRIM-N CITY. DEVI-TION FROM THIS DOCUMENT REQUIRES -PPROV-L OF HERRIM-N CITY. HERRIM-N CITY C-NNOT BE HELD LI-BLE FOR MISUSE OR CH-NGES REG-RDING THIS DOCUMENT.



**HERRIMAN CITY**  
**ENGINEERING DEPARTMENT**  
 IRRIGATION  
 DRIP TEE CONNECTION TO PVC RISER

**IR-07**



- ① FINISHED GRADE
- ② BARK MULCH 3" DEPTH
- ③ COMBINATION TEE 1/2" X 1/2" X 3/4" FPT MODEL: TL075FTEE
- ④ TECHLINE CV DRIPLINE (SEE PLANS FOR EMMITER SIZE AND SPACING)
- ⑤ 3/4" PVC MPT THREADED TOE NIPPLE RISER
- ⑥ LASCO UNITIZED SWING JOINT OR SPEARS SWING JOINT RISER ASSEMBLY; 6" IN LENGTH
- ⑦ PVC SCHEDULE 40 SXSXT TEE
- ⑧ PVC LATERAL LINE, SIZE AS NOTED ON PLAN
- ⑨ SWING JOINT ARM INSTALLED AT ANGLE BETWEEN 20 AND 45 DEG. OF LATERAL PIPE

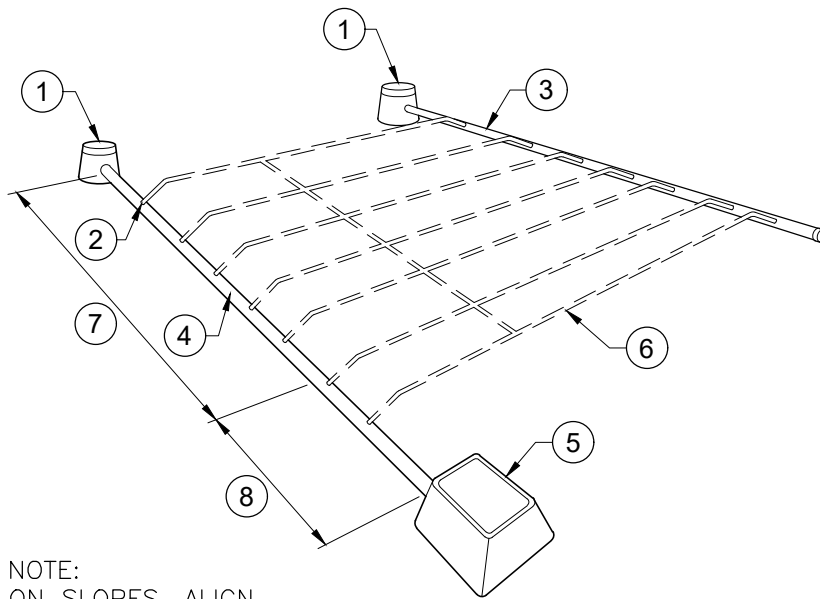
NO.	REVISION DESCRIPTION	D-T-E

THIS DOCUMENT -ND -NY ILLUSTR-TIONS HEREON -RE PROVIDED -S -ST-ND-RD CONSTRUCTION DET-ILS WITHIN HERRIM-N CITY. DEVI-TION FROM THIS DOCUMENT REQUIRES -PPROV-L OF HERRIM-N CITY. HERRIM-N CITY C-NNOT BE HELD LI-BLE FOR MISUSE OR CH-NGES REG-RDING THIS DOCUMENT.



**HERRIMAN CITY**  
**ENGINEERING DEPARTMENT**  
 IRRIGATION  
 DRIP ELL CONNECTION TO PVC RISER

**IR-08**



NOTE:  
ON SLOPES, ALIGN  
DRIPLINE PARALLEL TO  
THE CONTOURS OF THE  
SLOPE.

- ① MANUAL FLUSH VALVE PLUMBED TO PVC AT LOWEST POINT
- ② NETAFIM TLIAPVC CONNECTOR
- ③ 1 ½" PVC EXHAUST HEADER (SEE NOTES FOR DEPTH)
- ④ 1 ½" PVC SUPPLY HEADER (SEE NOTES FOR DEPTH)
- ⑤ REMOTE CONTROL VALVE ASSEMBLY
- ⑥ DRIPLINE TUBING LATERAL – INSTALL AT GRADE UNDER MULCH AND ON TOP OF FABRIC (IF FABRIC IS USED)
- ⑦ ON SLOPES, USE THE SPECIFIED DRIPLINE SPACING ON THE TOP ⅔ OF THE SLOPE
- ⑧ ON SLOPES, USE THE SPECIFIED DRIPLINE SPACING PLUS 25% ON THE BOTTOM ⅓ OF SLOPE

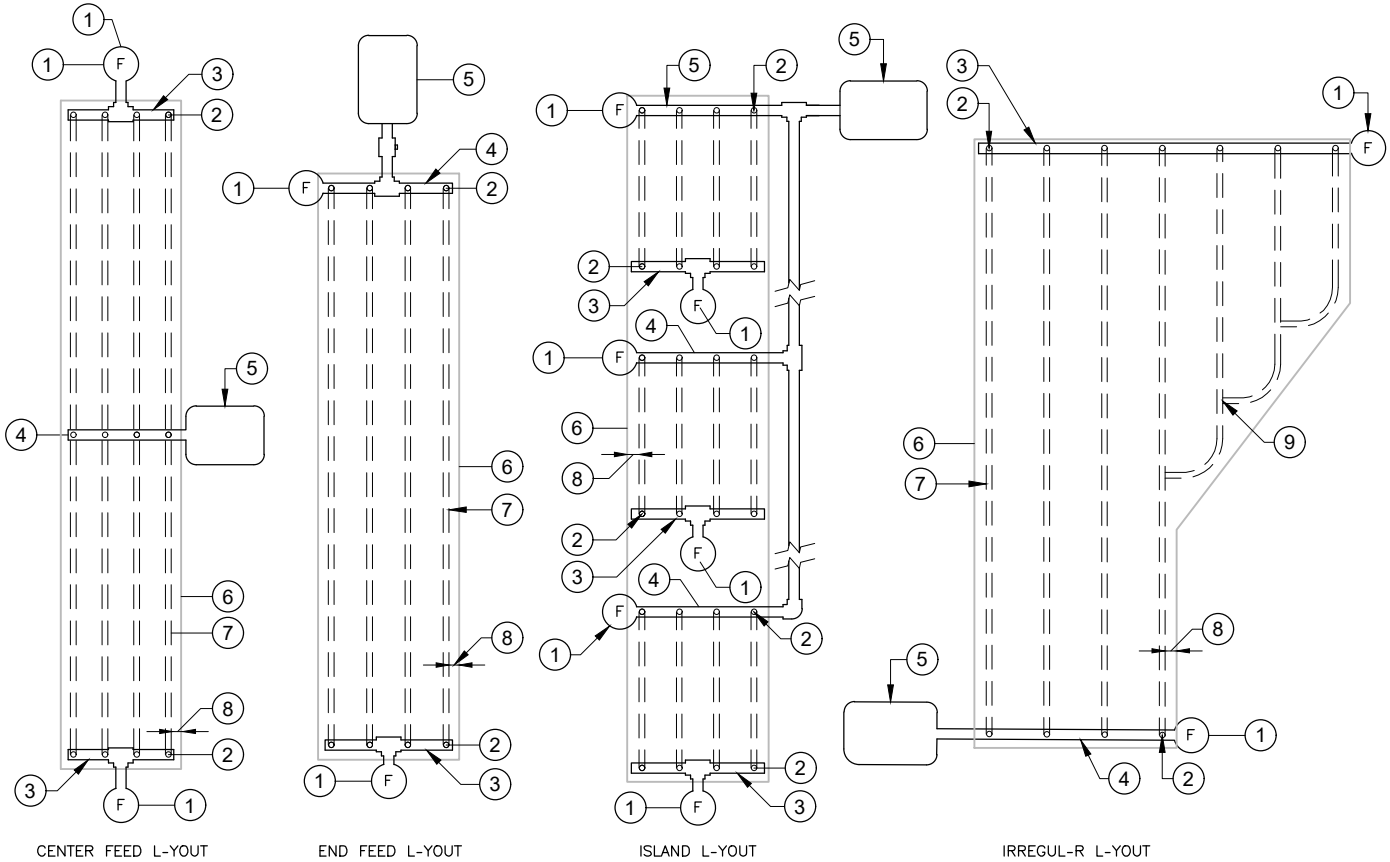
NO.	REVISION DESCRIPTION	D-TITLE

THIS DOCUMENT -ND -NY ILLUSTRATIONS  
HEREON -RE PROVIDED -S -ST-ND-RD  
CONSTRUCTION DET-ILS WITHIN HERRIM-N  
CITY. DEVI-TION FROM THIS DOCUMENT  
REQUIRES -PPROV-L OF HERRIM-N CITY.  
HERRIM-N CITY C-NNOT BE HELD U-BLE  
FOR MISUSE OR CH-NGES REG-RDING THIS  
DOCUMENT.



**HERRIMAN CITY**  
**ENGINEERING DEPARTMENT**  
**IRRIGATION**  
**DRIPLINE CIRCUIT LAYOUT**

**IR-09**



- ① MANUAL FLUSH VALVE PLUMBED TO PVC IN LOWEST POINT
- ② NETAFIM TLIAPVC CONNECTOR
- ③ 1 1/2" PVC EXHAUST HEADER
- ④ 1 1/2" PVC SUPPLY HEADER
- ⑤ REMOTE CONTROL VALVE ASSEMBLY

- ⑥ AREA PERIMETER
- ⑦ DRIPLINE TUBING LATERAL
- ⑧ PERIMETER DRIPLINE TUBING LATERALS 2" TO 4" FROM EDGE
- ⑨ DRIPLINE TEE

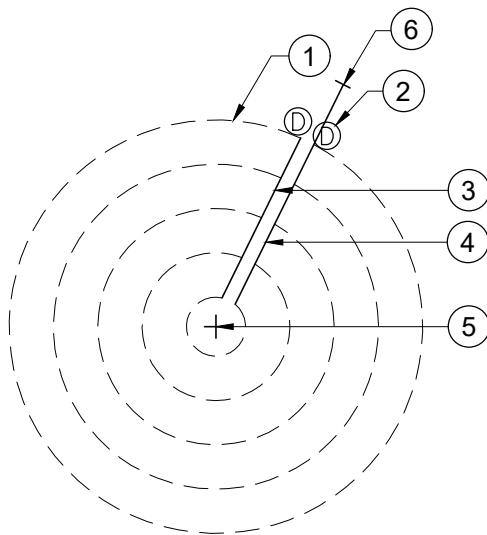
NO.	REVISION DESCRIPTION	D-T-E

THIS DOCUMENT -ND -NY ILLUSTRATIONS HEREON -RE PROVIDED -S ST-ND-RD CONSTRUCTION DET-ILS WITHIN HERRIM-N CITY. DEVI-TION FROM THIS DOCUMENT REQUIRES -PPROV-L OF HERRIM-N CITY. HERRIM-N CITY C-NNOT BE HELD U-BLE FOR MISUSE OR CH-NGES REG-RDING THIS DOCUMENT.



**HERRIMAN CITY**  
**ENGINEERING DEPARTMENT**  
**IRRIGATION**  
**INLINE DRIP LAYOUTS**

**IR-10**



- ① DRIPLINE TUBING – ATTACH TO HEADERS USING INSERT ADAPTOR W/ GROMMET\*
- ② DRIP FLUSH VALVE\*\*
- ③ 1 1/2" EXHAUST HEADER
- ④ 1 1/2" SUPPLY HEADER
- ⑤ TREE CENTER
- ⑥ LATERAL LINE SUPPLY

NOTES:

\* NETAfim #TLIAPVC-B

\*\*LOCATE DRAINS AT END OF HEADERS WHICH ARE THE LOWEST POINT OF TREE RING.

SPACE DRIP TUBING 12" FROM TRUNK WITH ADDITIONAL TUBING RINGS 18" APART.

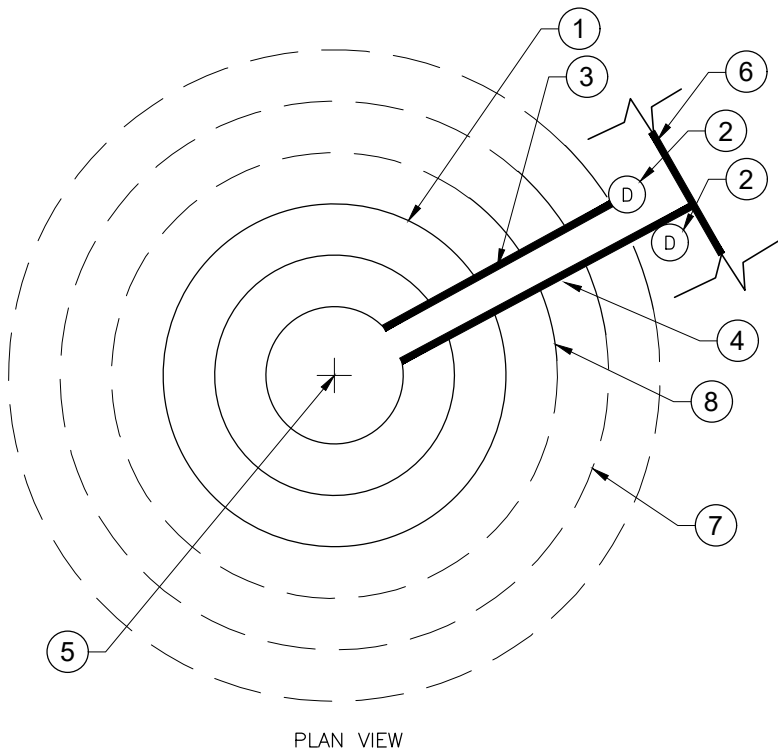
NO.	REVISION DESCRIPTION	D-T-E

THIS DOCUMENT -ND -NY ILLUSTRATIONS HEREON -RE PROVIDED -S -ST-ND-RD CONSTRUCTION DET-ILS WITHIN HERRIM-N CITY. DEVI-TION FROM THIS DOCUMENT REQUIRES -PPROV-L OF HERRIM-N CITY. HERRIM-N CITY C-NNOT BE HELD U-BLE FOR MISUSE OR CH-NGES REG-RDING THIS DOCUMENT.



<b>HERRIMAN CITY</b> <b>ENGINEERING DEPARTMENT</b> IRRIGATION DRIP TREE RING
---

IR-11
-------



- ① DRIPLINE TUBING – ATTACH TO HEADERS USING INSERT ADAPTOR W/ GROMMET\*
- ② DRIP FLUSH VALVE\*\*
- ③ 1 1/2" EXHAUST HEADER
- ④ 1 1/2" SUPPLY HEADER
- ⑤ TREE CENTER
- ⑥ LATERAL LINE SUPPLY
- ⑦ FUTURE DRIPLINE TUBING – ATTACH TO STUBBED TUBING
- ⑧ STUBBED TUBING WITH INSERT COUPLING ON END FOR FUTURE EXPANSION (TYP). FOLD AND CLAMP TUBING CLOSED. STUBBED TUBING SHALL LIE ON FINISHED GRADE. (SEE STUBBED TUBING SECTION DETAIL FOR MORE INFORMATION)

NOTES:

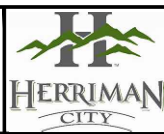
\* NETAFIM #TLIAPVC-B

\*\* LOCATE DRAINS AT END OF HEADERS WHICH ARE THE LOWEST POINT OF TREE RING

SPACE DRIP TUBING 12" FROM TRUNK WITH ADDITIONAL TUBING RINGS 18" APART.

NO.	REVISION DESCRIPTION	D-T

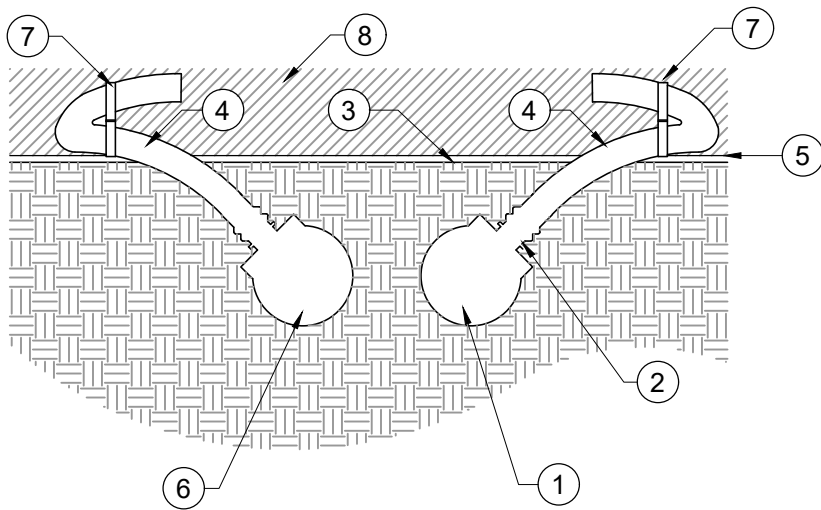
THIS DOCUMENT -ND -NY ILLUSTRATIONS HEREON -RE PROVIDED -S -ST-ND-RD CONSTRUCTION DET-ILS WITHIN HERRIM-N CITY. DEVI-TION FROM THIS DOCUMENT REQUIRES -PPROV-L OF HERRIM-N CITY. HERRIM-N CITY C-NNOT BE HELD U-BLE FOR MISUSE OR CH-NGES REG-RDING THIS DOCUMENT.



**HERRIMAN CITY**  
**ENGINEERING DEPARTMENT**  
**IRRIGATION**  
**DRIP TREE RING - PHASED**

**IR-12**

\\S:\FILES\PUBLIC\PROJECTS\HERRIMAN\83-17-040 CITY STANDARDS MANUAL UPDATE 2017\TEXT\SUBMITTALS\SECTION 6 (COMPLETE)\2020-11-05\IR-DETAILS.DWG



- ① 1 1/2" PVC SUPPLY HEADER
- ② TLIAPVC CONNECTION
- ③ PLANTING BED FINISHED GRADE
- ④ DRIPLINE / BLANK TUBING
- ⑤ WEED BARRIER FABRIC (IF USED)
- ⑥ EXHAUST HEADER
- ⑦ NETAFIM FIGURE 8 LINE END ADAPTER - MODEL TLF8
- ⑧ MULCH - SEE PLANTING PLAN

1/7/2021 4:50 PM

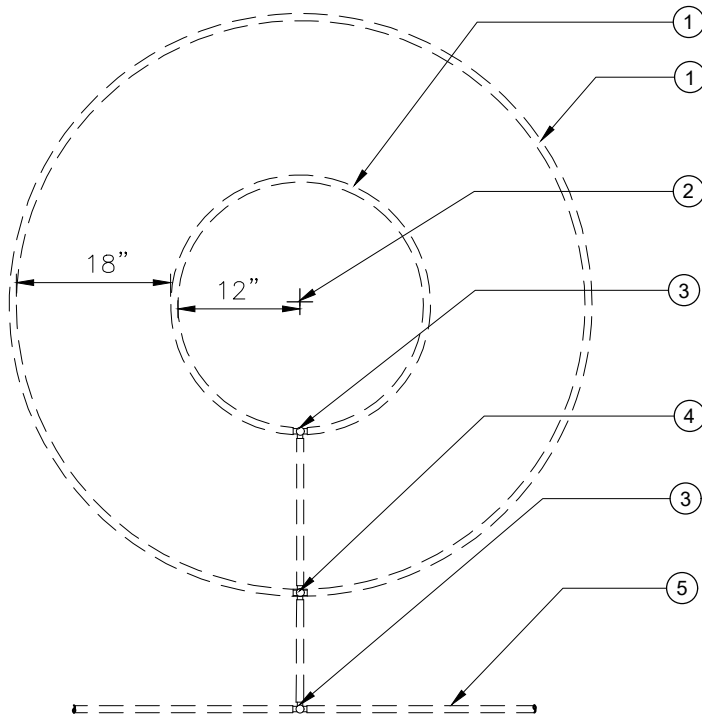
NO.	REVISION DESCRIPTION	D-T-E

THIS DOCUMENT -ND -NY ILLUSTR-TIONS HEREON -RE PROVIDED -S -ST-ND-RD CONSTRUCTION DET-ILS WITHIN HERRIM-N CITY. DEVI-TION FROM THIS DOCUMENT REQUIRES -PPROV-L OF HERRIM-N CITY. HERRIM-N CITY C-NNOT BE HELD LI-BLE FOR MISUSE OR CH-NGES REG-RDING THIS DOCUMENT.



**HERRIMAN CITY**  
**ENGINEERING DEPARTMENT**  
**IRRIGATION**  
**TREE DRIP RING - PHASED SECTION**

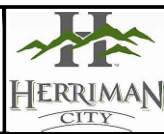
**IR-13**



- ① NETAFIM DRIPLINE (TYP)  
TDL-4-12 (18) TREE RING
- ② TREE TRUNK
- ③ INSERT TEE (TYP) MODEL: TLTEE
- ④ INSERT CROSS (TYP) MODEL: TLCROS
- ⑤ NETAFIM DRIPLINE (TYP)  
TDL-4-12 (18) SHRUB AREA

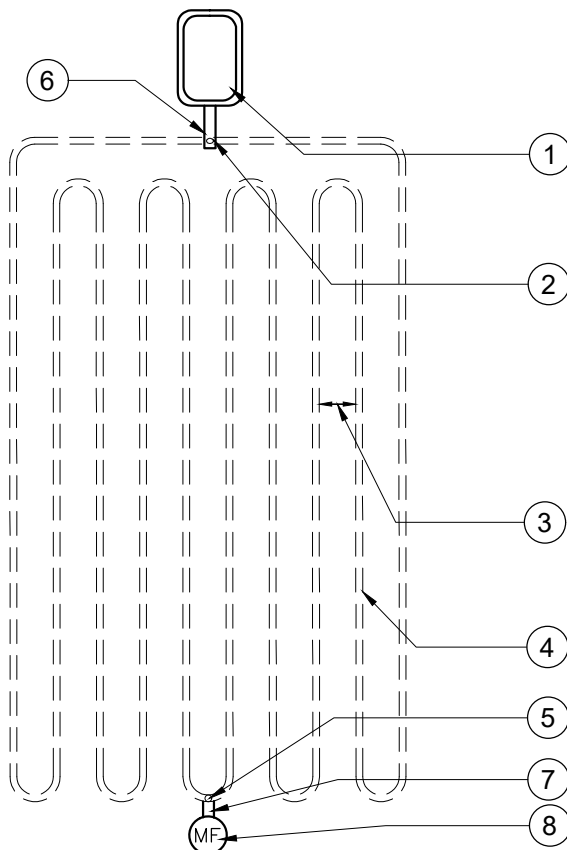
NO.	REVISION DESCRIPTION	D-T-E

THIS DOCUMENT -ND -NY ILLUSTR-TIONS  
HEREON -RE PROVIDED -S -ST-ND-RD  
CONSTRUCTION DET-ILS WITHIN HERRIM-N  
CITY. DEVI-TION FROM THIS DOCUMENT  
REQUIRES -PPROV-L OF HERRIM-N CITY.  
HERRIM-N CITY C-NNOT BE HELD LI-BLE  
FOR MISUSE OR CH-NGES REG-RDING THIS  
DOCUMENT.



**HERRIMAN CITY**  
**ENGINEERING DEPARTMENT**  
**IRRIGATION**  
TREE RING CONNECTED TO SURFACE DRIP

**IR-14**



- ① REMOTE CONTROL VALVE WITH DISC FILTER AND PRESSURE REGULATING VALVE
- ② COMBINATION TEE INS x INS x 3/4" FPT MODEL: TL075FTEE
- ③ ROW SPACING – PER PLANS (TYP.)
- ④ TECHLINE CV DRIPLINE (SEE PLANS FOR EMMITER SIZE AND SPACING)
- ⑤ INSERT TEE (TYP) MODEL: TLTEE
- ⑥ 3/4" PVC THREADED TOE NIPPLE RISER
- ⑦ BLANK TECHLINE CV TUBING
- ⑧ MANUAL FLUSH VALVE PLUMBED TO TECHLINE CV

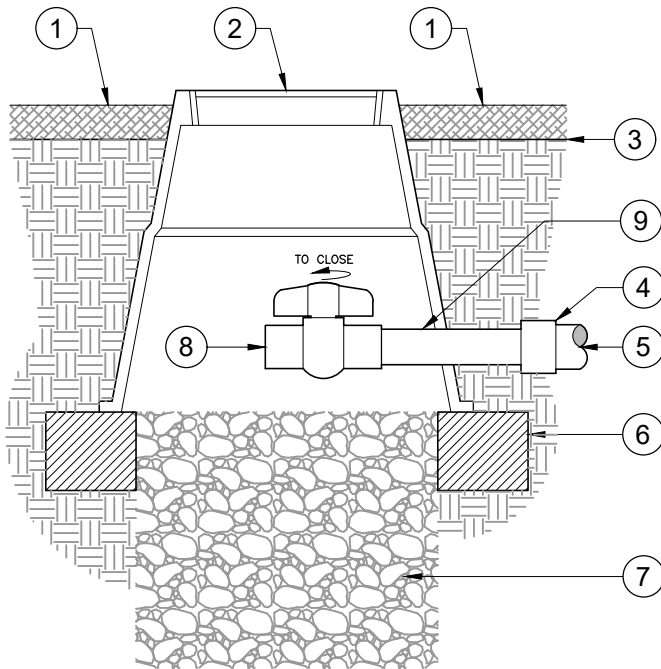
NO.	REVISION DESCRIPTION	D-T-E

THIS DOCUMENT -ND -NY ILLUSTRATIONS HEREON -RE PROVIDED -S -ST-ND-RD CONSTRUCTION DET-ILS WITHIN HERRIM-N CITY. DEVI-TION FROM THIS DOCUMENT REQUIRES -PPROV-L OF HERRIM-N CITY. HERRIM-N CITY C-NNOT BE HELD U-BLE FOR MISUSE OR CH-NGES REG-RDING THIS DOCUMENT.



**HERRIMAN CITY**  
**ENGINEERING DEPARTMENT**  
 IRRIGATION  
 SURFACE DRIPLINE LAYOUT

IR-15



- ① PLANTING BED MULCH – SEE PLANTING NOTES FOR DEPTH AND TYPE
- ② 8" ROUND GREEN PLASTIC VALVE BOX (CARSON OR APPROVED EQUAL) FLUSH WITH MULCH GRADE
- ③ FINISHED GRADE
- ④ PVC REDUCER BUSHING (SP X 1/2") FIPT – SIZE AS REQUIRED
- ⑤ PVC EXHAUST HEADER
- ⑥ 4"X4" TREATED TIMBER FRAME
- ⑦ 1 C.F. 3/4" CRUSHED SEWER GRAVEL
- ⑧ PLASTIC PVC BALL VALVE
- ⑨ 1/2 X 6 (SCH. 80 PVC) NIPPLE TBE

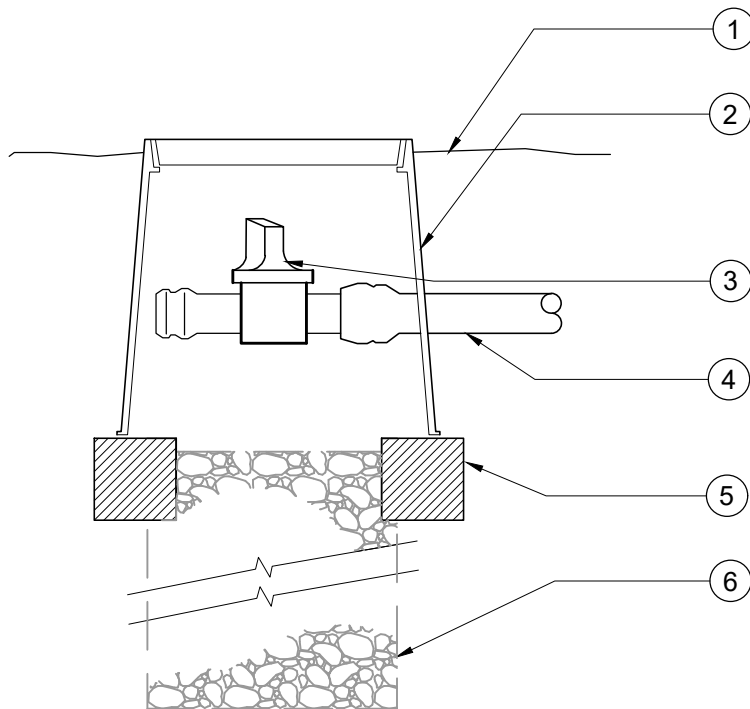
NO.	REVISION DESCRIPTION	DATE

THIS DOCUMENT AND ANY ILLUSTRATIONS HEREON ARE PROVIDED AS STANDARD CONSTRUCTION DETAILS WITHIN HERRIMAN CITY. DEVIATION FROM THIS DOCUMENT REQUIRES APPROVAL OF HERRIMAN CITY. HERRIMAN CITY CANNOT BE HELD LIABLE FOR MISUSE OR CHANGES REGARDING THIS DOCUMENT.



**HERRIMAN CITY**  
**ENGINEERING DEPARTMENT**  
**LANDSCAPE**  
**DRIP FLUSH VALVE (PLUMBED TO PVC HEADER)**

**IR-16**



- ① FINISH GRADE
- ② 8" ROUND GREEN PLASTIC VALVE BOX (CARSON OR APPROVED EQUAL)
- ③ MANUAL LINE FLUSHING VALVE NETAFIM MODEL: TL5OV
- ④ TECHLINE CV 17mm TUBING
- ⑤ 4"X4" TREATED TIMBER FRAME
- ⑥ 1 C.F. 3/4" CRUSHED SEWER ROCK

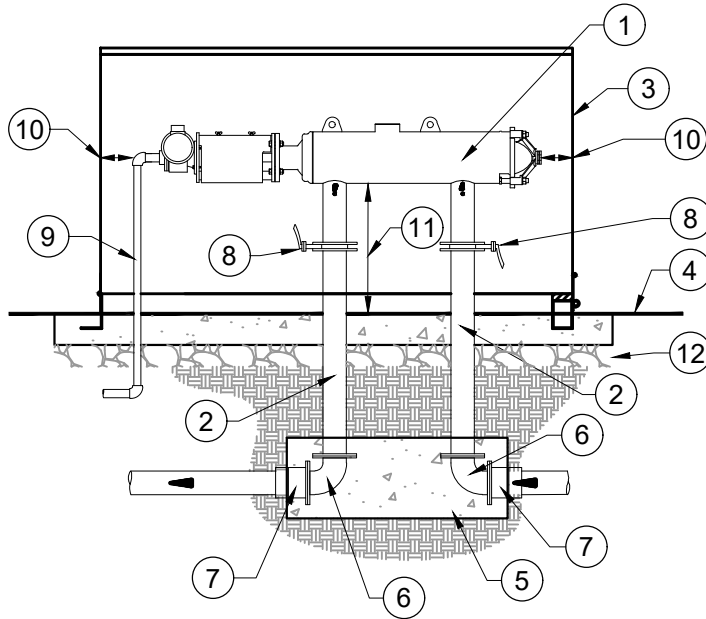
NO.	REVISION DESCRIPTION	D-T-E

THIS DOCUMENT -ND -NY ILLUSTR-TIONS HEREON -RE PROVIDED -S -ST-ND-RD CONSTRUCTION DET-ILS WITHIN HERRIM-N CITY. DEVI-TION FROM THIS DOCUMENT REQUIRES -PPROV-L OF HERRIM-N CITY. HERRIM-N CITY C-NNOT BE HELD LI-BLE FOR MISUSE OR CH-NGES REG-RDING THIS DOCUMENT.



**HERRIMAN CITY**  
**ENGINEERING DEPARTMENT**  
**LANDSCAPE**  
**DRIP FLUSH VALVE (PLUMBED TO DRIPLINE)**

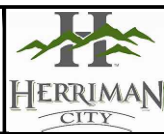
**IR-17**



- ① INLINE FILTER – SEE IRRIGATION EQUIPMENT SCHEDULE
- ② FL X FL DUCTILE IRON SPOOL (LENGTH AS REQUIRED)
- ③ FILTER ENCLOSURE – SEE IRRIGATION EQUIPMENT SCHEDULE
- ④ FINISHED GRADE
- ⑤ CONCRETE THRUST BLOCK (TYP). WRAP PIPES W/ 10 MIL TAPE. CAST AGAINST UNDISTURBED SOIL.
- ⑥ FL X FL DUCTILE IRON 90 DEGREE ELL
- ⑦ FL X BELL DUCTILE IRON ADAPTER (SIZE AS REQUIRED)
- ⑧ CAST IRON WAFER BUTTERFLY VALVE
- ⑨ BACKFLUSH EXHAUST PIPE TO NEAREST STORM DRAIN BOX OR STORMWATER STRUCTURE – DEPENDING ON PROJECT REQUIREMENTS
- ⑩ 6" MIN.
- ⑪ 12" MIN.
- ⑫ 4" UBC COMPACTED TO 95% MDD PER ASTM D-1557

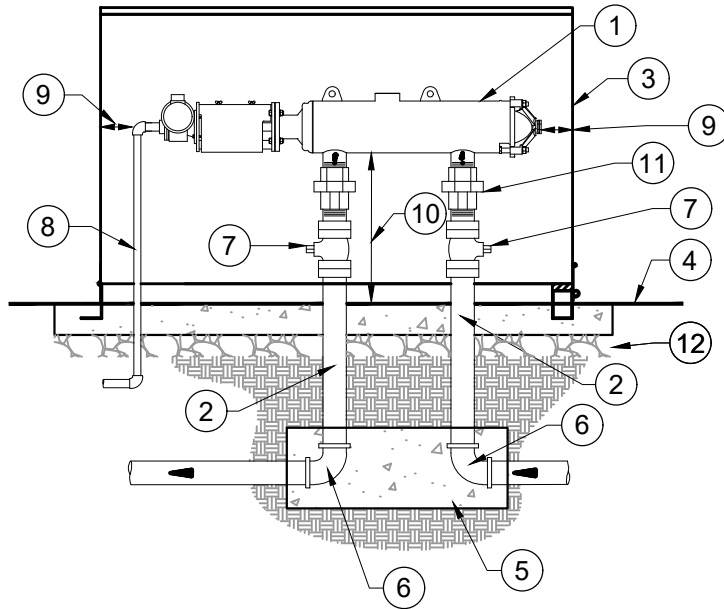
NO.	REVISION DESCRIPTION	D-T-E

THIS DOCUMENT -ND -NY ILLUSTRATIONS HEREON -RE PROVIDED -S -ST-ND-RD CONSTRUCTION DET-ILS WITHIN HERRIM-N CITY. DEVI-TION FROM THIS DOCUMENT REQUIRES -PPROV-L OF HERRIM-N CITY. HERRIM-N CITY C-NNOT BE HELD LI-BLE FOR MISUSE OR CH-NGES REG-RDING THIS DOCUMENT.



**HERRIMAN CITY**  
**ENGINEERING DEPARTMENT**  
**LANDSCAPE**  
**3" AND LARGER FILTER ASSEMBLY**

**IR-18**



- ① INLINE FILTER — SEE IRRIGATION EQUIPMENT SCHEDULE
- ② GALVANIZED THREADED NIPPLE (LENGTH AS REQUIRED)
- ③ FILTER ENCLOSURE — SEE IRRIGATION EQUIPMENT SCHEDULE
- ④ FINISHED GRADE
- ⑤ CONCRETE THRUST BLOCK (TYP). WRAP PIPES W/ 10 MIL TAPE. CAST AGAINST UNDISTURBED SOIL.
- ⑥ FEMALE THREADED GALVANIZED 90 DEGREE ELL
- ⑦ FULL PORT APOLLO BALL VALVE
- ⑧ BACKFLUSH EXHAUST PIPE TO NEAREST STORM DRAIN BOX OR STORMWATER STRUCTURE — DEPENDING ON PROJECT REQUIREMENTS
- ⑨ 6" MIN.
- ⑩ 12" MIN.
- ⑪ THREADED ACTION UNION
- ⑫ 4" UBC COMPACTED TO 95% MDD PER ASTM D-1557

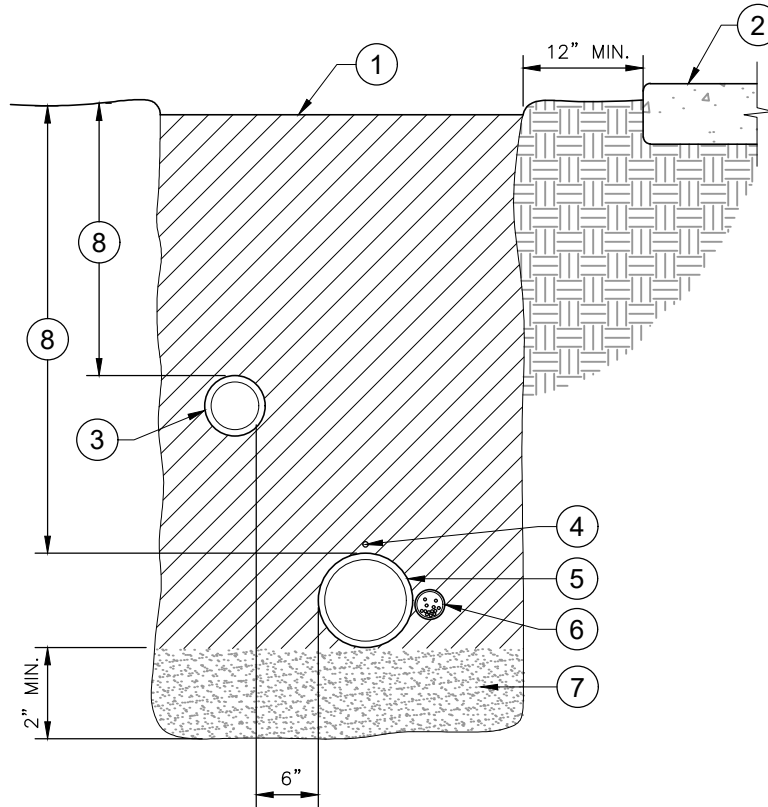
NO.	REVISION DESCRIPTION	D-T-E

THIS DOCUMENT AND ANY ILLUSTRATIONS HEREON ARE PROVIDED AS STANDARD CONSTRUCTION DETAILS WITHIN HERRIMAN CITY. DEVIATION FROM THIS DOCUMENT REQUIRES APPROVAL OF HERRIMAN CITY. HERRIMAN CITY CANNOT BE HELD LIABLE FOR MISUSE OR CHANGES REGARDING THIS DOCUMENT.



**HERRIMAN CITY**  
**ENGINEERING DEPARTMENT**  
**LANDSCAPE**  
**2" AND SMALLER FILTER ASSEMBLY**

**IR-19**



- ① BACKFILL MATERIAL – SEE NOTES, COMPACT TO 90% MDD PER ASTM D-1557
- ② ADJACENT HARD SURFACE
- ③ NON-PRESSURE LATERAL LINE
- ④ MAIN LINE LOCATOR WIRE; BURIED WITH ALL MAIN LINES
- ⑤ PVC MAIN LINE
- ⑥ DIRECT BURIAL, LOW VOLTAGE CONTROL WIRES; TO BE INSTALLED IN ELECTRICAL CONDUIT. LOCATE DIRECTLY ADJACENT TO MAIN LINE.
- ⑦ BEDDING MATERIAL – SEE LANDSCAPE PLANS
- ⑧ PIPE DEPTHS – SEE IRRIGATION SPECIFICATIONS

NOTE: SEE SLEEVING DETAIL FOR TRENCHING IN PAVED AREAS.

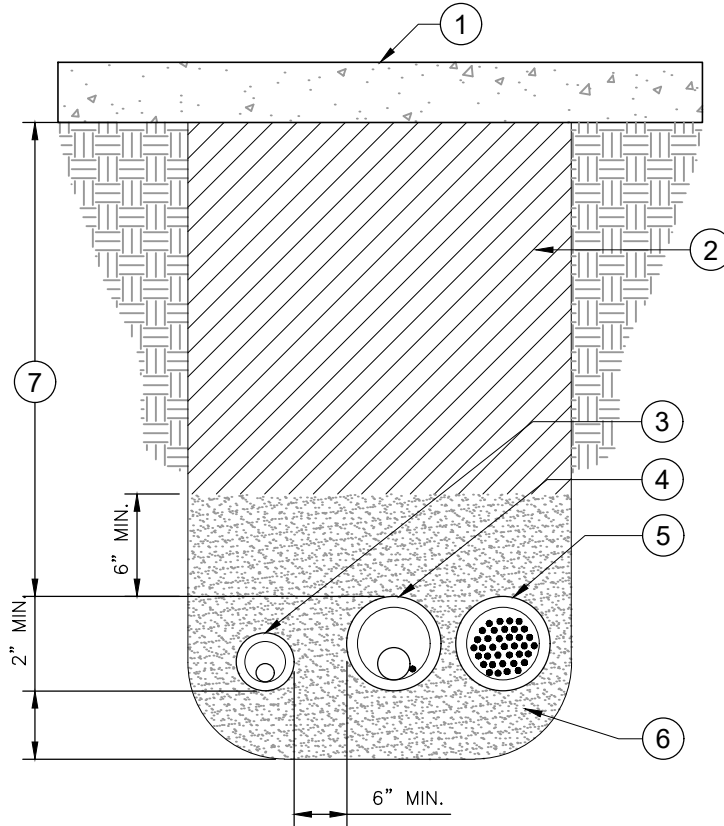
NO.	REVISION DESCRIPTION	D-T-E

THIS DOCUMENT -ND -NY ILLUSTRATIONS HEREON -RE PROVIDED -S -ST-ND-RD CONSTRUCTION DET-ILS WITHIN HERRIM-N CITY. DEVI-TION FROM THIS DOCUMENT REQUIRES -PPROV-L OF HERRIM-N CITY. HERRIM-N CITY C-NNOT BE HELD U-BLE FOR MISUSE OR CH-NGES REG-RDING THIS DOCUMENT.



**HERRIMAN CITY**  
**ENGINEERING DEPARTMENT**  
 LANDSCAPE  
 TRENCH DETAIL

IR-20



- ① HARDSCAPE SURFACE – SEE PLANS
- ② BACKFILL MATERIAL – SEE PLANS AND HERRIMAN CITY SPECIFICATIONS
- ③ LATERAL LINE WITH SLEEVE
- ④ PVC MAIN LINE AND LOCATOR WIRE WITH SLEEVE
- ⑤ CONTROL WIRE SLEEVE – SEE CHART BELOW FOR SIZE
- ⑥ BEDDING MATERIAL – SEE NOTES
- ⑦ MIN. COVER – 12” UNDER WALKS AND 18” UNDER STREETS

NOTES:

1. SLEEVES 4” AND SMALLER USE PVC SCHEDULE 40 PIPE.
2. SLEEVES LARGER THAN 4” USE PVC CLASS 200.
3. ALL SLEEVES SHALL BE TWO (2) TIMES LARGER THAN THE DIAMETER OF THE PIPE BEING SLEEVED, UNLESS NOTED OTHERWISE ON THE PLANS.
4. INSTALL SLEEVES AT A DEPTH SUFFICIENT TO AVOID CONFLICT WITH OTHER UTILITIES AND MAINS.
5. WIRES SHALL BE IN SEPARATE CONDUIT
6. REFER TO SLEEVING DIAGRAM FOR SIZES OF ALL SLEEVES
7. EXTEND ALL SLEEVING 12” MIN. BEYOND EDGE OF PAVING.

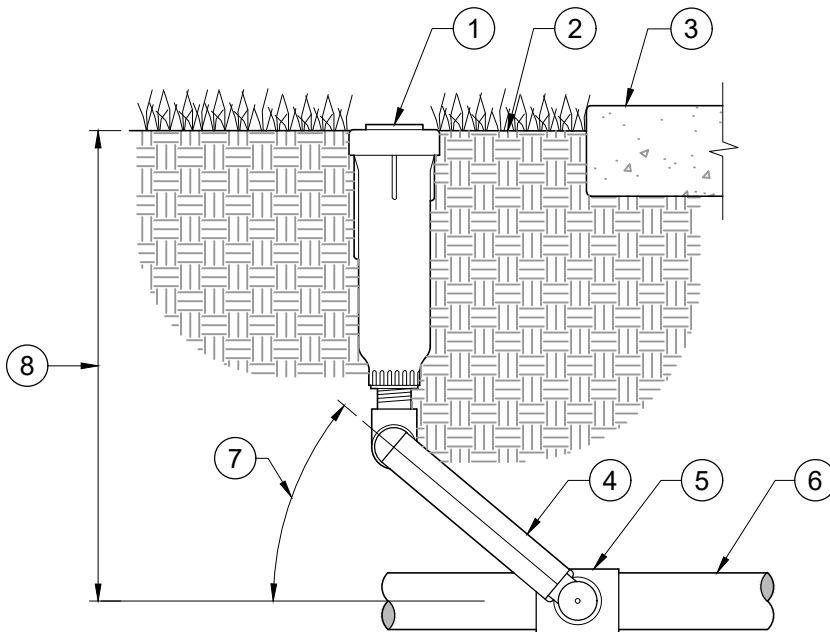
NO.	REVISION DESCRIPTION	DATE

THIS DOCUMENT AND ANY ILLUSTRATIONS HEREON ARE PROVIDED AS STANDARD CONSTRUCTION DETAILS WITHIN HERRIMAN CITY. DEVIATION FROM THIS DOCUMENT REQUIRES APPROVAL OF HERRIMAN CITY. HERRIMAN CITY CANNOT BE HELD LIABLE FOR MISUSE OR CHANGES REGARDING THIS DOCUMENT.



**HERRIMAN CITY**  
**ENGINEERING DEPARTMENT**  
 LANDSCAPE  
 SLEEVE DETAIL

**IR-21**



- ① POP-UP ROTOR SPRINKLER – SEE IRRIGATION EQUIPMENT SHCHEDULE
- ② TOP OF SPRINKLER WILL BE FLUSH WITH FINISHED GRADE
- ③ NOTE: ALL SPRAY HEADS ADJACENT TO HARDSCAPE SHALL BE LOCATED 2" CLEAR OF ALL HARDSCAPE EDGES
- ④ LASCO UNITIZED SWING JOINT OR SPEARS SWING JOINT RISER ASSEMBLY; MIN. LENGTH – SIZE AS REQUIRED
- ⑤ PVC SCHEDULE 40 SXSXT TEE OR ELL
- ⑥ PVC LATERAL LINE, SIZE AS NOTED ON PLAN
- ⑦ SWING JOINT ARM INSTALLED AT ANGLE BETWEEN 20 AND 45 DEG. OF LATERAL PIPE
- ⑧ DEPTH – SEE NOTES AND TRENCH DETAIL

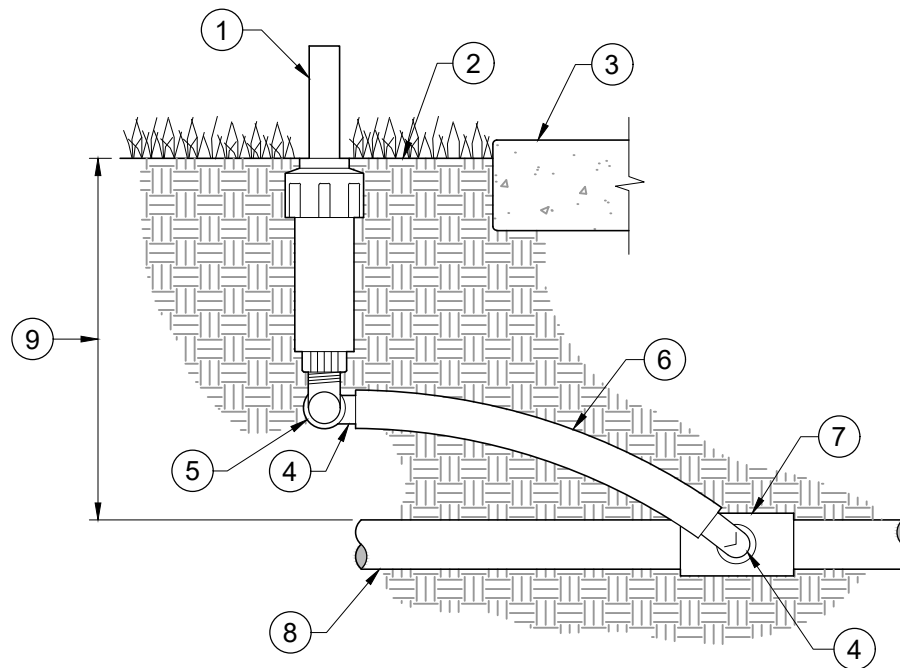
NO.	REVISION DESCRIPTION	D-T-E

THIS DOCUMENT -ND -NY ILLUSTRATIONS HEREON -RE PROVIDED -S -ST-ND-RD CONSTRUCTION DET-ILS WITHIN HERRIM-N CITY. DEVI-TION FROM THIS DOCUMENT REQUIRES -PPROV-L OF HERRIM-N CITY. HERRIM-N CITY C-NNOT BE HELD LI-BLE FOR MISUSE OR CH-NGES REG-RDING THIS DOCUMENT.



**HERRIMAN CITY**  
**ENGINEERING DEPARTMENT**  
**LANDSCAPE**  
**POP-UP GEAR DRIVE ROTOR SPRINKLER**

**IR-22**



- ① POP-UP SPRAY HEAD – SEE IRRIGATION EQUIPMENT SCHEDULE
- ② TOP OF SPRINKLER WILL BE FLUSH WITH FINISHED GRADE
- ③ NOTE: ALL SPRAY HEADS ADJACENT TO HARDSCAPE SHALL BE LOCATED 2" CLEAR OF ALL HARDSCAPE EDGES
- ④ SWING PIPE ELL WITH SPIRAL BARB FITTING (TYP.)
- ⑤ MARLEX STREET ELL
- ⑥ FLEXIBLE SWING PIPE, 12" MIN., 36" MAX. LENGTH
- ⑦ PVC SCHEDULE 40 S X S X T TEE (OR ELL)
- ⑧ PVC LATERAL LINE, SIZE AS NOTED ON PLAN
- ⑨ DEPTH – SEE NOTES AND TRENCH DETAIL

NO.	REVISION DESCRIPTION	D-T-E

THIS DOCUMENT AND ANY ILLUSTRATIONS HEREON ARE PROVIDED AS STANDARD CONSTRUCTION DETAILS WITHIN HERRIMAN CITY. DEVIATION FROM THIS DOCUMENT REQUIRES APPROVAL OF HERRIMAN CITY. HERRIMAN CITY CANNOT BE HELD LIABLE FOR MISUSE OR CHANGES REGARDING THIS DOCUMENT.



**HERRIMAN CITY**  
**ENGINEERING DEPARTMENT**  
**LANDSCAPE**  
**POP-UP SPRAY/ROTARY SPRINKLER**

**IR-23**

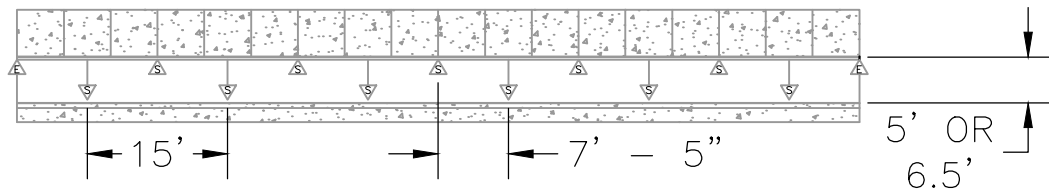
\\S:\FILES\PUBLIC\PROJECTS\HERRIMAN\83-17-040 CITY STANDARDS MANUAL UPDATE 2017\TEXT\SUBMITTALS\SECTION 6 (COMPLETE)\2020-11-05\IR\IR-DETAILS.DWG

1/7/2021 4:51 PM

NOTE:

SPACING SHOWN IS FOR 5' MOW STRIP. VARY SPACING ACCORDINGLY FOR OTHER STREETSCAPE WIDTHS.

- △ NEW RAINBIRD SST-PC POP-UP SPRAY HEAD
- ▽ NEW RAINBIRD EST-PC POP-UP SPRAY HEAD



NOTES:

1. HEADS ALTERNATING TO FORM TRIANGLE SPACING.
2. DRAWING NOT TO SCALE.
3. MAIN LINE AND LATERALS ARE TO BE LOCATED ON SIDEWALK SIDE OF PARK STRIP.

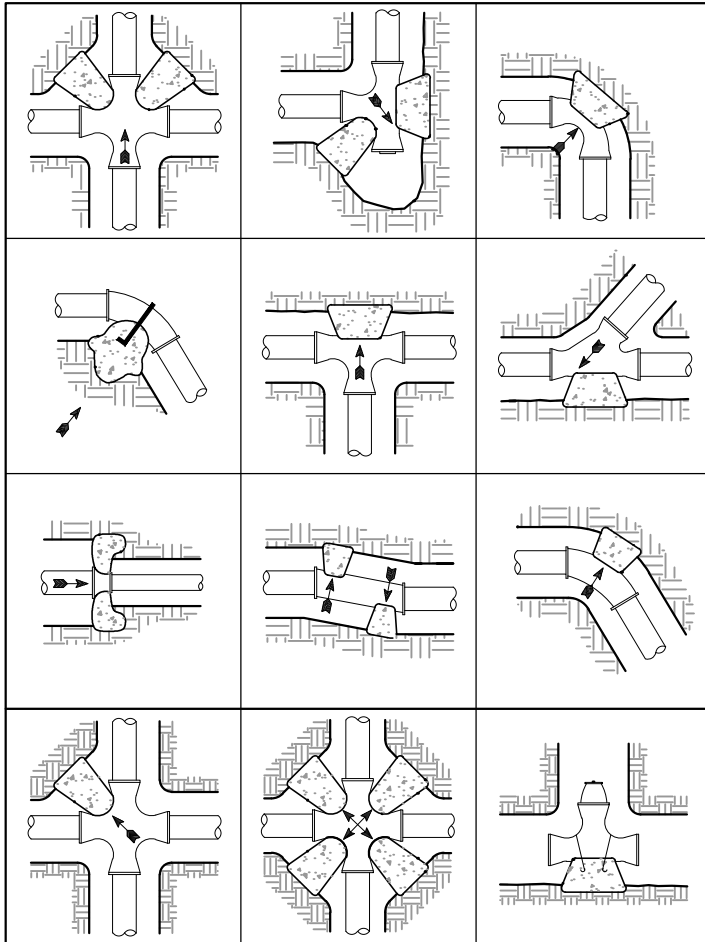
NO.	REVISION DESCRIPTION	D - DATE

THIS DOCUMENT AND ANY ILLUSTRATIONS HEREON ARE PROVIDED AS STANDARDS FOR CONSTRUCTION DETAILS WITHIN HERRIMAN CITY. DEVIATION FROM THIS DOCUMENT REQUIRES APPROVAL OF HERRIMAN CITY. HERRIMAN CITY CANNOT BE HELD LIABLE FOR MISUSE OR CHANGES REGARDING THIS DOCUMENT.



**HERRIMAN CITY**  
**ENGINEERING DEPARTMENT**  
**LANDSCAPE**  
**TYPICAL STREETSCAPE HEAD PATTERN**

**IR-24**



**DETAIL NOTES:**

1. FIGURE (100%) AT THRUST BLOCK INDICATES PERCENT OF TOTAL THRUST TO BE APPLIED FOR BEARING AREA OF 2,000 P.S.F.
2. ARROW (➡) INDICATES THRUST DIRECTION.
3. CONCRETE FOR THRUST BLOCKS TO BE 2,000 P.S.I.
4. ALL MJ AND FLANGED FITTINGS TO BE WRAPPED WITH POLYETHYLENE WRAP PRIOR TO POURING THRUST BLOCK.
5. CONTROL WIRE SHALL BE KEPT OUT OF THE CONCRETE THRUST BLOCKS.
6. ALL MAIN LINE FITTINGS THREE (3") INCHES AND LARGER, WHETHER DUCTILE IRON OR SOLVENT WELD, SHALL BE THRUST BLOCKED.

MINIMUM BEARING AREA IN SQ. FT.					
PIPE SIZE	DEAD END OR TEE	90° ELBOW	45° ELBOW	22 1/2° ELBOW	11 1/4° ELBOW
3	2	3	2	2	2
4	2	3	2	2	2
6	4	5.5	3	2.5	2
8	6.5	9.5	5	2.75	2.5
12	14	20	11	5.5	3

NOTE: RESTRAINT SIZING IS BASED UPON A MAXIMUM OPERATING PRESSURE OF 150 PSI AND A TEST PRESSURE OF 200 PSI, AND A MINIMUM SOIL BEARING STRENGTH OF 2,000 PSF. OPERATING PRESSURES IN EXCESS OF 150 OR SOILS WITH LESS THAN 2,000 POUND BEARING STRENGTH WILL REQUIRE SPECIAL DESIGN.

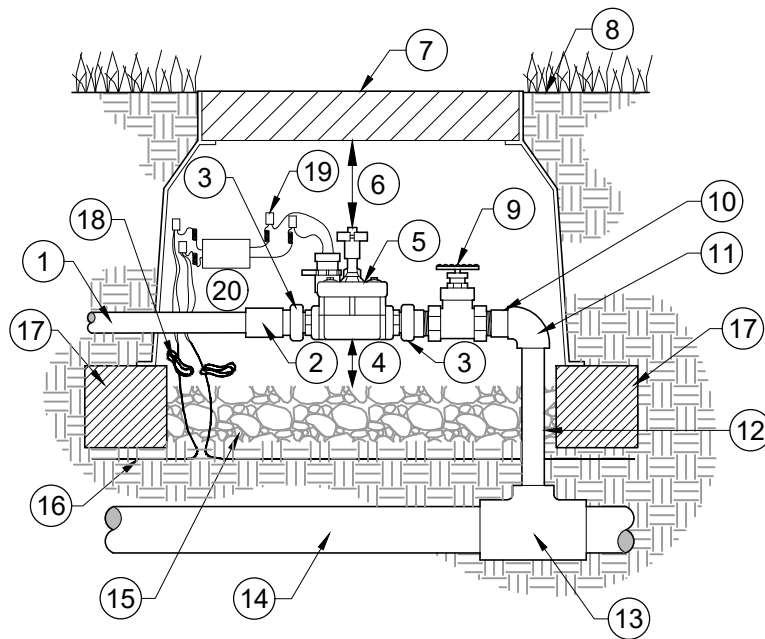
NO.	REVISION DESCRIPTION	D-T-E

THIS DOCUMENT -ND -NY ILLUSTRATIONS HEREON -RE PROVIDED -S ST-ND-RD CONSTRUCTION DET-ILS WITHIN HERRIM-N CITY. DEVI-TION FROM THIS DOCUMENT REQUIRES -PPROV-L OF HERRIM-N CITY. HERRIM-N CITY C-NNOT BE HELD U-BLE FOR MISUSE OR CH-NGES REG-RDING THIS DOCUMENT.



**HERRIMAN CITY**  
**ENGINEERING DEPARTMENT**  
 LANDSCAPE  
 THRUST BLOCK DETAIL

**IR-25**



NOTE:

1. ONLY ONE VALVE PER BOX.
2. PLACE BOXES A MINIMUM OF 2' APART.
3. USE BOX EXTENSIONS AS REQUIRED.

- |  |   |
|--|---|
| ① PVC LATERAL LINE   | ⑩ PVC TOE NIPPLE  |
| ② SCHEDULE 80 THREADED UNION   | ⑪ PVC SCHEDULE 80 ELL   |
| ③ ACTION UNION – PART PART 18010-XX, PART 18011-XX, PART 18012-XX  | ⑫ PVC SCHEDULE 80 PIPE, SOLVENT WELDED – LENGTH AS REQUIRED   |
| ④ 2" MIN. CLEARANCE  | ⑬ PVC SCHEDULE 80 TEE (OR ELL OR DUCTILE IRON SERVICE TEE)  |
| ⑤ REMOTE CONTROL VALVE – SEE IRRIGATION EQUIPMENT SCHEDULE   | ⑭ PVC MAIN LINE   |
| ⑥ 3" MIN. 6" MAX. CLEARANCE  | ⑮ 4" MIN. PEA GRAVEL  |
| ⑦ PLASTIC VALVE BOX W/ BOLT LOCK (CARSON OR APPROVED EQUAL) SIZE AS PER VALVE SIZE: 1" VALVE = 18" STANDARD BOX; 1 1/2" – 2" VALVE = 18" JUMBO BOX | ⑯ WIRES TO CONTROLLER; INSTALL IN CONDUIT – SEE TRENCH DETAIL. USE SWEEP ELLS TO BRING WIRES TO VALVE BOX |
| ⑧ FINISHED GRADE   | ⑰ 4"x4" TREATED TIMBER FRAME  |
| ⑨ BRASS RESILIENT SEATED WEDGE GATE VALVE (MILWAUKEE OR APPROVED AMERICAN MADE BRASS) WITH HANDWHEEL AND NON-RISING STEM                           | ⑱ PROVIDE 24" EXPANSION LOOP AT EACH WIRE CONNECTOR IN VALVE BOX  |
|  | ⑲ 3M DBR/Y ELECTRIC CONTROL WIRE CONNECTORS (TYP.)  |
|  | ⑳ DECODER – SEE IRRIGATION EQUIPMENT SCHEDULE   |

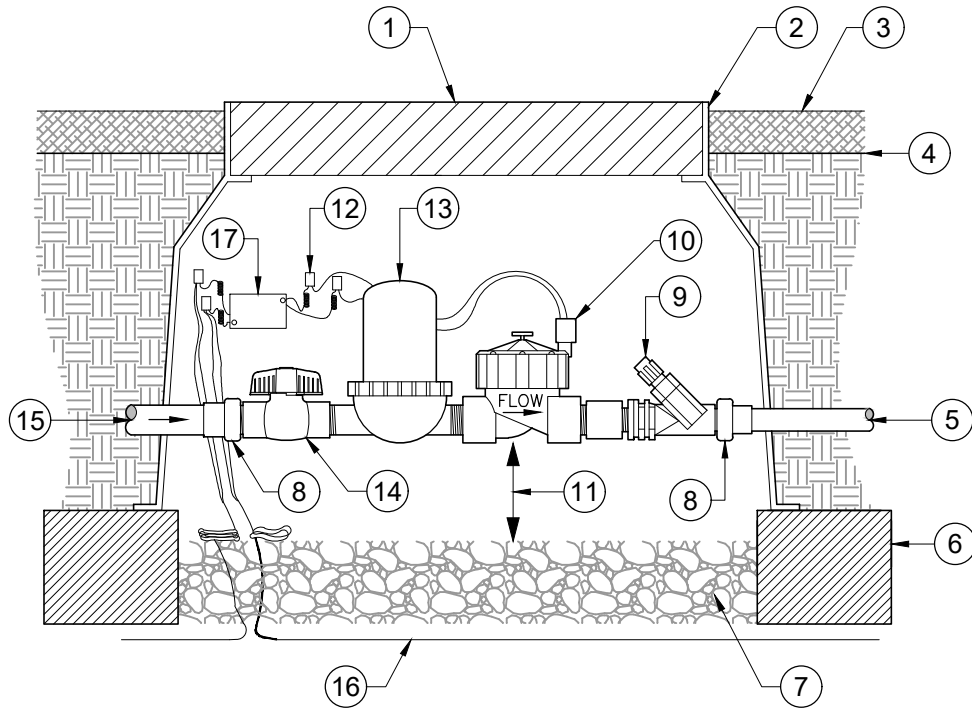
NO.	REVISION DESCRIPTION	D-T-E

THIS DOCUMENT -ND -NY ILLUSTRATIONS HEREON -RE PROVIDED -S ST-ND-RD CONSTRUCTION DET-ILS WITHIN HERRIM-N CITY. DEVI-TION FROM THIS DOCUMENT REQUIRES -P-ROV-L OF HERRIM-N CITY. HERRIM-N CITY C-NNOT BE HELD U-BLE FOR MISUSE OR CH-NGES REG-RDING THIS DOCUMENT.



**HERRIMAN CITY**  
**ENGINEERING DEPARTMENT**  
**LANDSCAPE**  
**2-WIRE CONTROL VALVE ASSEMBLY**

**IR-26**



- ① 18" JUMBO GREEN PLASTIC VALVE BOX W/ BOLT LOCK (CARSON OR APPROVED EQUAL)
- ② 1" MAX. CLEARANCE
- ③ PLANTING BED MULCH – SEE PLANTING SPECIFICATIONS AND PLANS FOR DEPTH AND TYPE
- ④ FINISHED GRADE
- ⑤ PVC SUPPLY HEADER
- ⑥ 4"X4" TREATED TIMBER FRAME
- ⑦ 4" MIN. PEA GRAVEL
- ⑧ THREADED ACTION UNION (TYP.)
- ⑨ INLINE PRESSURE REGULATOR
- ⑩ ELECTRIC CONTROL VALVE – SEE IRRIGATION EQUIPMENT SCHEDULE
- ⑪ 2" MIN. CLEARANCE
- ⑫ (4) 3M DBR/Y WATER TIGHT WIRE CONNECTORS
- ⑬ INLINE 1" FILTER
- ⑭ PLASTIC PVC BALL VALVE
- ⑮ FLOW FROM PVC MAIN LINE
- ⑯ TWO-WIRE CONTROL WIRE; INSTALL IN CONDUIT – SEE TRENCH DETAIL. USE SWEEP ELLS TO BRING WIRE INTO VALVE BOX
- ⑰ DECODER – SEE IRRIGATION EQUIPMENT SCHEDULE

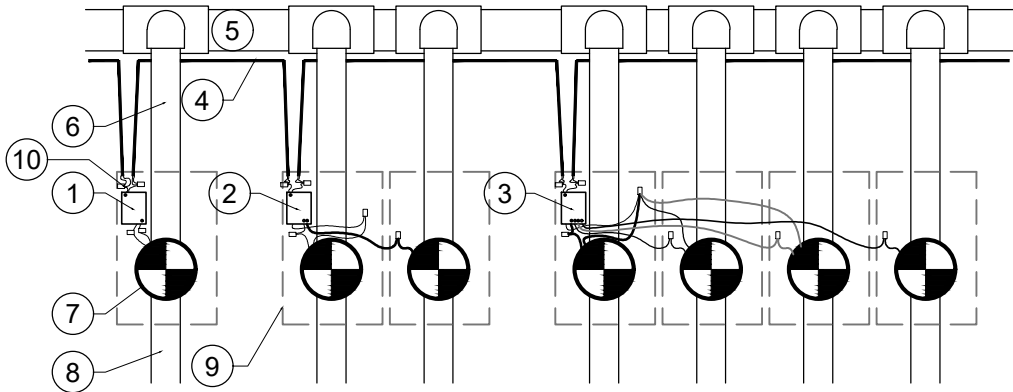
NO.	REVISION DESCRIPTION	DATE

THIS DOCUMENT AND ANY ILLUSTRATIONS HEREON ARE PROVIDED AS STANDARD CONSTRUCTION DETAILS WITHIN HERRIMAN CITY. DEVIATION FROM THIS DOCUMENT REQUIRES APPROVAL OF HERRIMAN CITY. HERRIMAN CITY CANNOT BE HELD LIABLE FOR MISUSE OR CHANGES REGARDING THIS DOCUMENT.



**HERRIMAN CITY**  
**ENGINEERING DEPARTMENT**  
**LANDSCAPE**  
**2- WIRE DRIP ZONE REMOTE CONTROL VALVE**

**IR-27**



NOTES:  
VALVE BOXES SHALL HAVE A MINIMUM  
SPACING OF 2'. INSTALL DECODERS  
PER MANUFACTURE'S RECOMMENDATIONS.

- |  |  |
|--|--|
| ① SINGLE (1) VALVE DECODER –<br>SEE IRRIGATION EQUIPMENT<br>SCHEDULE   | ⑤ MAIN LINE  |
| ② DOUBLE (2) VALVE DECODER –<br>SEE IRRIGATION EQUIPMENT<br>SCHEDULE   | ⑥ MAIN LINE STUB TO CONTROL<br>VALVE   |
| ③ QUADRUPL (4) VALVE DECODER<br>– SEE IRRIGATION EQUIPMENT<br>SCHEDULE | ⑦ CONTROL VALVE – SEE<br>IRRIGATION EQUIPMENT SCHEDULE<br>AND CONTROL VALVE DETAIL |
| ④ TWO WIRE COMMUNICATION<br>WIRE TO CONTROLLER                         | ⑧ LATERAL TO HEADS   |
|  | ⑨ VALVE BOX – SEE CONTROL<br>VALVE DETAIL  |
|  | ⑩ 3M DBR/Y WATER TIGHT WIRE<br>CONNECTORS (TYP.)                                   |

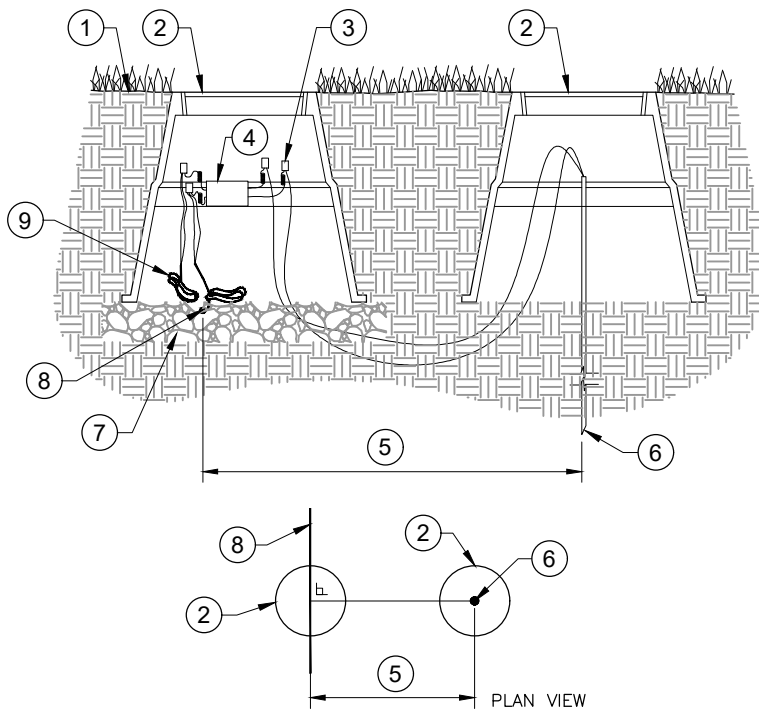
NO.	REVISION DESCRIPTION	D-T-E

THIS DOCUMENT -ND -NY ILLUSTR-TIONS  
HEREON -RE PROVIDED -S -ST-ND-RD  
CONSTRUCTION DET-ILS WITHIN HERRIM-N  
CITY. DEVI-TION FROM THIS DOCUMENT  
REQUIRES -PPROV-L OF HERRIM-N CITY.  
HERRIM-N CITY C-NNOT BE HELD U-BLE  
FOR MISUSE OR CH-NGES REG-RDING THIS  
DOCUMENT.



**HERRIMAN CITY**  
**ENGINEERING DEPARTMENT**  
**LANDSCAPE**  
**2-WIRE DECODER DIAGRAM**

**IR-28**



- ① FINISHED GRADE
- ② 8" ROUND GREEN PLASTIC VALVE BOX WITH BOLT LOCK (CARSON OR APPROVED EQUAL)
- ③ 3M DBR/Y ELECTRIC CONTROL WIRE CONNECTORS (TYP.)
- ④ DECODER – SEE IRRIGATION EQUIPMENT SCHEDULE
- ⑤ MIN. 10' FROM TWO-WIRE
- ⑥ 5/8" DIA. X 8' LENGTH COPPER GROUND ROD
- ⑦ 4" MIN. PEA GRAVEL
- ⑧ TWO WIRE TO CONTROLLER
- ⑨ 24" MIN. EXPANSION LOOP AT EACH WIRE SPLICE ON TWO WIRE

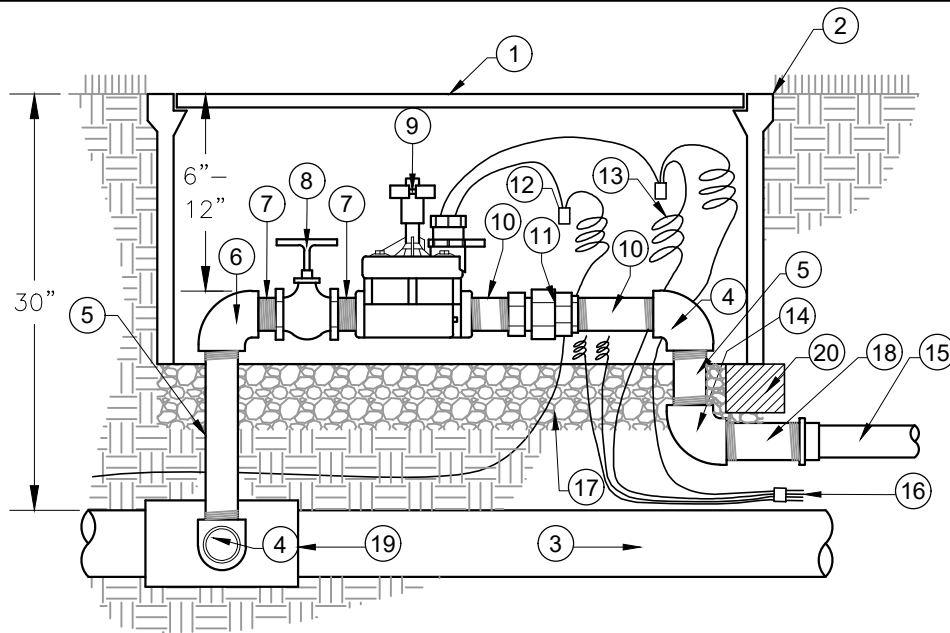
NO.	REVISION DESCRIPTION	D-T-E

THIS DOCUMENT -ND -NY ILLUSTRATIONS HEREON -RE PROVIDED -S -ST-ND-RD CONSTRUCTION DET-ILS WITHIN HERRIMAN CITY. DEVI-TION FROM THIS DOCUMENT REQUIRES -PPROV-L OF HERRIMAN CITY. HERRIMAN CITY C-NNOT BE HELD U-BLE FOR MISUSE OR CH-NGES REG-RDING THIS DOCUMENT.



**HERRIMAN CITY**  
**ENGINEERING DEPARTMENT**  
**LANDSCAPE**  
**GROUND RODS FOR TWO WIRE SYSTEM**

**IR-29**



NOTE:

1. ONLY ONE VALVE PER BOX.
2. PLACE BOXES A MINIMUM OF 2' APART.
3. USE BOX EXTENSIONS AS REQUIRED.
4. ALL FITTINGS AND NIPPLES IN MANIFOLD SHALL BE SCHEDULE 80 THREADED PVC USING TEFLON TAPE AND #5 RECTOR SEAL.
5. VALVE MANIFOLD TO BE INSTALLED PERPENDICULAR (90 DEGREES) TO MAIN LINE. MIN. OF 1' BEFORE CHANGE IN DIRECTION.

- ① CARSON—STANDARD OR JUMBO VALVE BOX WITH STAINLESS STEEL BOLTS. (BOLT DOWN LID). (MUST BE APPROVED BY LANDSCAPE ARCHITECT PRIOR TO INSTALLATION)
- ② INSTALL AT GRADE
- ③ MAIN WATER SUPPLY LINE
- ④ PVC SCHEDULE 80 T X T ELBOW
- ⑤ PVC SCHEDULE 80 NIPPLE; LENGTH AS REQUIRED (TYP.)
- ⑥ PVC SCHEDULE 80 T X T ELBOW SAME SIZE AS VALVE
- ⑦ PVC SCHEDULE 80 NIPPLE ON EITHER SIDE OF GATE VALVE
- ⑧ BRASS GATE VALVE WITH NON RISING STEM (LINE SIZE)
- ⑨ ELECTRIC CONTROL VALVE — SEE EQUIPMENT SCHEDULE
- ⑩ SCHEDULE 80 NIPPLE ON EITHER SIDE OF THE UNION
- ⑪ PVC SCHEDULE 80 UNION
- ⑫ WATER TIGHT CONNECTORS (3M DBR/Y ONLY)
- ⑬ PROVIDE 18" EXPANSION LOOP AT EACH WIRE CONNECTOR IN BOX
- ⑭ SCHEDULE 80 ELBOW WITH SCHEDULE 80 NIPPLE INTO T X T BUSHING TO LATERAL
- ⑮ LATERAL LINE
- ⑯ CONTROL WIRES & SPARE WIRES, IN STALL IN CONDUIT — SEE TRENCH DETAIL. USE SWEEP ELLS TO BRING WIRE INTO VALVE BOX.
- ⑰ 6" MIN. DEPTH CLEAN PEA GRAVEL
- ⑱ THREADED NIPPLE WITH BUSHING OR FEMALE ADAPTER
- ⑲ PVC SCHEDULE 80 TEE 5 X 5 X 5 WITH SCHEDULE 80 SXT BUSHING OR DOUBLE STRAP SADDLE OR HARCO SERVICE TEE
- ⑳ 4"x4" TREATED TIMBER FRAME

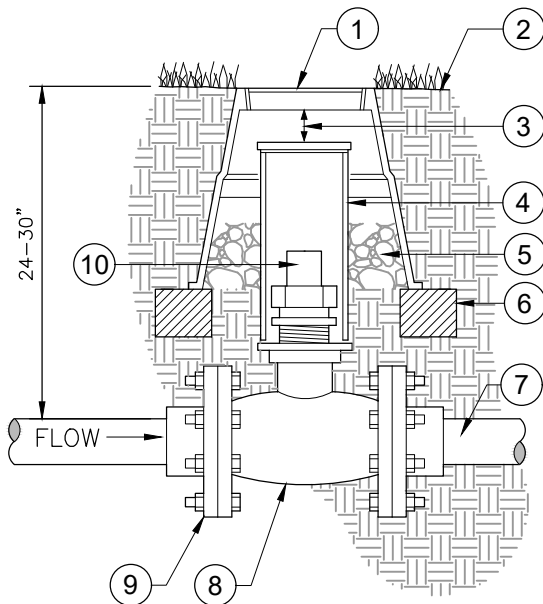
NO.	REVISION DESCRIPTION	D - TE

THIS DOCUMENT -ND -NY ILLUSTR-TIONS  
HEREON -RE PROVIDED -S ST-ND-RD  
CONSTRUCTION DET-ILS WITHIN HERRIM-N  
CITY. DEVI-TION FROM THIS DOCUMENT  
REQUIRES -PPROV-L OF HERRIM-N CITY.  
HERRIM-N CITY C-NNOT BE HELD LI-BLE  
FOR MISUSE OR CH-NGES REG-RDING THIS  
DOCUMENT.



**HERRIMAN CITY**  
**ENGINEERING DEPARTMENT**  
LANDSCAPE  
CONTROL VALVE ASSEMBLY

IR-30



- ① 10" ROUND PLASTIC VALVE BOX W/  
BOLT LOCK (CARSON OR APPROVED  
EQUAL, MARKED "G.V." IN 2" WHITE  
LETTERS)
- ② FINISHED GRADE
- ③ 3" MIN. CLEARANCE
- ④ 4" PVC SCHEDULE 40 PIPE SLEEVE  
(NOTCH TO FIT PIPE), CAPPED BY  
GREEN CAM LOCK SNUG CAP
- ⑤ 3"-4" DEPTH CLEAN PEA GRAVEL
- ⑥ 4"X4" TREATED TIMBER FRAME
- ⑦ PVC MAIN LINE
- ⑧ FLANGED GATE VALVE – SEE  
IRRIGATION EQUIPMENT SCHEDULE
- ⑨ PVC FLANGE ADAPTOR (TYP.)
- ⑩ 2" SQUARE OPERATING NUT

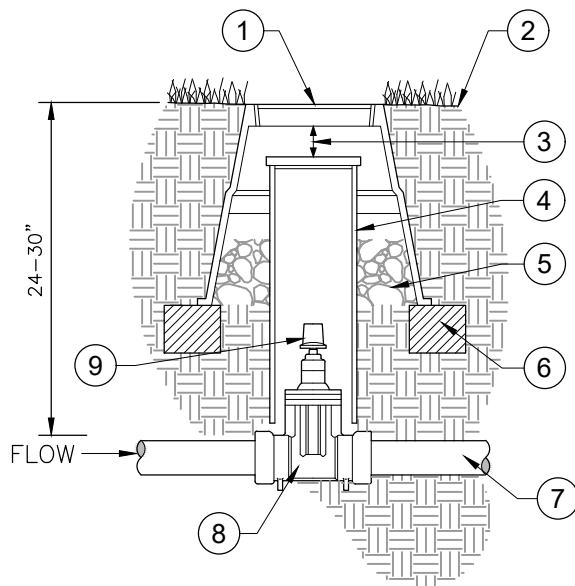
NO.	REVISION DESCRIPTION	D-T-E

THIS DOCUMENT -ND -NY ILLUSTR-TIONS  
HEREON -RE PROVIDED -S -ST-ND-RD  
CONSTRUCTION DET-ILS WITHIN HERRIM-N  
CITY. DEVI-TION FROM THIS DOCUMENT  
REQUIRES -PPROV-L OF HERRIM-N CITY.  
HERRIM-N CITY C-NNOT BE HELD LI-BLE  
FOR MISUSE OR CH-NGES REG-RDING THIS  
DOCUMENT.



**HERRIMAN CITY**  
**ENGINEERING DEPARTMENT**  
**LANDSCAPE**  
**ISOLATION GATE VALVE (FLANGED 3" & LARGER)**

**IR-31**



- ① 10" ROUND PLASTIC VALVE BOX W/  
BOLT LOCK (CARSON OR APPROVED  
EQUAL MARKED "G.V." IN 2" WHITE  
LETTERS).
- ② FINISHED GRADE
- ③ 3" MIN. CLEARANCE
- ④ 4" PVC SCHEDULE 40 PIPE SLEEVE  
(NOTCH TO FIT PIPE), CAPPED BY  
CAM LOCK SNUG CAP
- ⑤ 3"-4" DEPTH CLEAN PEA GRAVEL
- ⑥ 4"X4" TREATED TIMBER FRAME
- ⑦ PVC MAIN LINE
- ⑧ GATE VALVE – SEE IRRIGATION  
EQUIPMENT SCHEDULE
- ⑨ 2" SQUARE OPERATING NUT

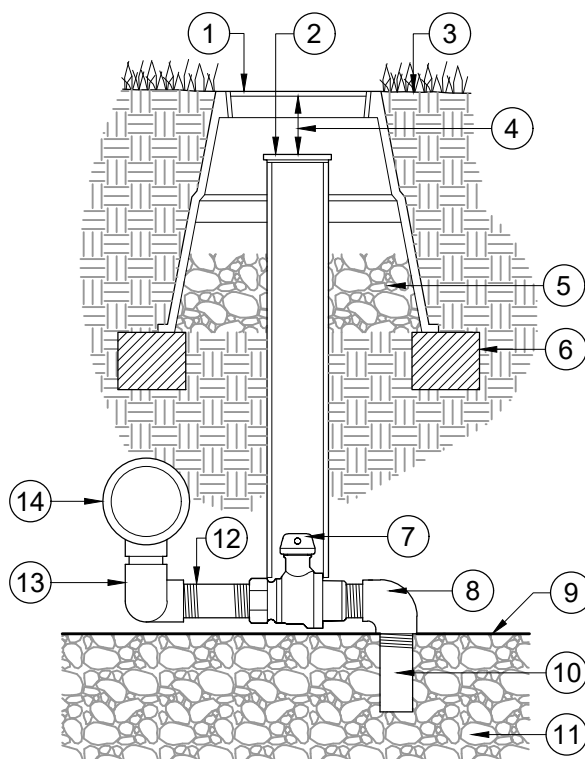
NO.	REVISION DESCRIPTION	D-T-E

THIS DOCUMENT -ND -NY ILLUSTRATIONS  
HEREON -RE PROVIDED -S -ST-ND-RD  
CONSTRUCTION DET-ILS WITHIN HERRIM-N  
CITY. DEVI-TION FROM THIS DOCUMENT  
REQUIRES -PPROV-L OF HERRIM-N CITY.  
HERRIM-N CITY C-NNOT BE HELD LI-BLE  
FOR MISUSE OR CH-NGES REG-RDING THIS  
DOCUMENT.



**HERRIMAN CITY**  
**ENGINEERING DEPARTMENT**  
**LANDSCAPE**  
**ISOLATION GATE VALVE (PUSH-ON; 2")**

**IR-32**



- ① 10" ROUND GREEN PLASTIC VALVE BOX WITH BOLT LOCK (CARSON OR APPROVED EQUAL)
  - ② 4" PVC SCHEDULE 40 PIPE SLEEVE (NOTCH TO FIT PIPE), CAPPED BY YELLOW CAM LOCK SNUG CAP
  - ③ FINISHED GRADE
  - ④ 3" MIN. 6" MAX. CLEARANCE
  - ⑤ 4" MIN. PEA GRAVEL
  - ⑥ 4"X4" TREATED TIMBER FRAME
  - ⑦ 3/4" VALVE — SEE IRRIGATION EQUIPMENT SCHEDULE
  - ⑧ 3/4" 90 DEGREE STREET ELL
  - ⑨ FILTER FABRIC COVERING SUMP
  - ⑩ 3/4" X 6" PVC SCHEDULE 80 TOE NIPPLE
  - ⑪ 3/4" CRUSHED SEWER ROCK — 6 C.F. MIN. SIZE
  - ⑫ 3/4" X 12" PVC SCHEDULE 80 NIPPLE
  - ⑬ (2) 1/2" X 1/2" 90 DEGREE ELL,  
(2) 3/4" X CLOSE PVC NIPPLE
  - ⑭ PVC MAIN LINE AND SERVICE TEE
- NOTE: MAIN LINE SHALL GRAVITY DRAIN TO MANUAL DRAIN VALVE. MANUAL DRAIN VALVE SHALL BE PLACED IN ALL LOW SPOTS AND WHERE SHOWN ON THE PLAN.

NOTE: MAIN LINE SHALL GRAVITY  
DRAIN TO MANUAL DRAIN VALVE.  
MANUAL DRAIN VALVE SHALL BE  
PLACED IN ALL LOW SPOTS AND  
WHERE SHOWN ON THE PLAN.

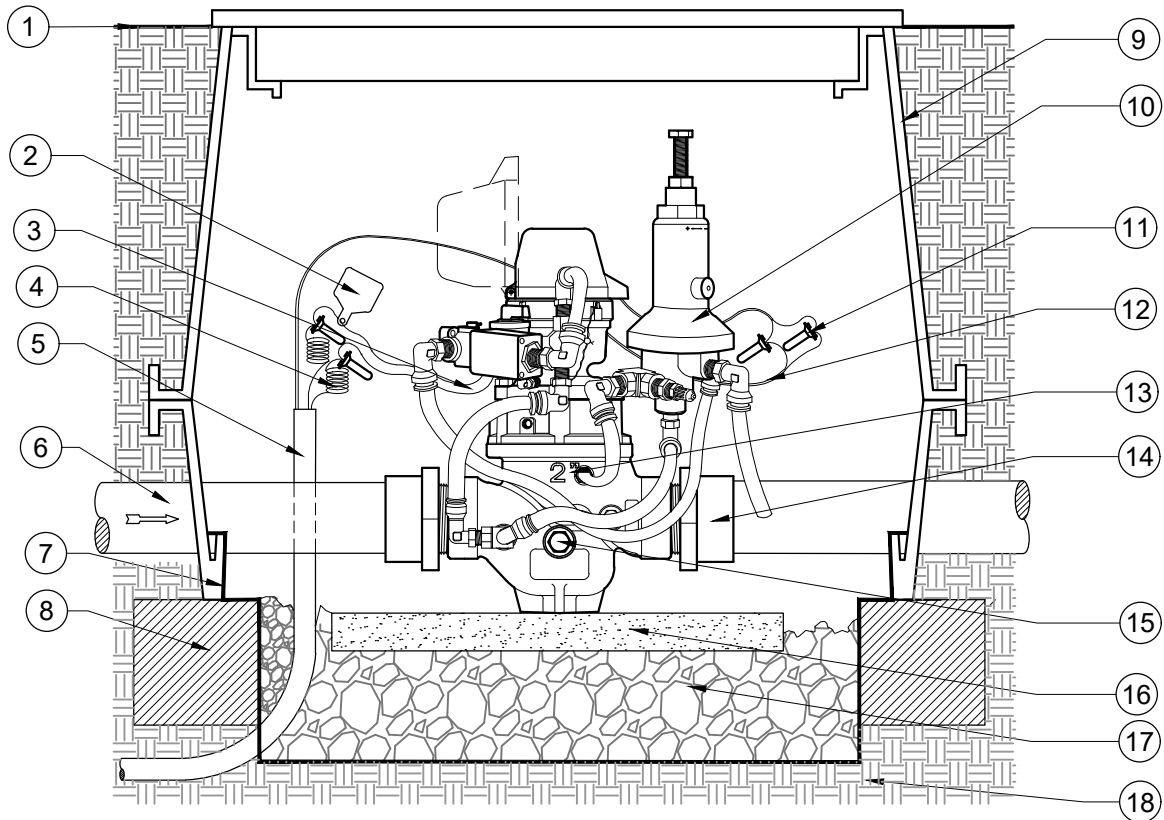
NO.	REVISION DESCRIPTION	DATE

THIS DOCUMENT AND ANY ILLUSTRATIONS  
HEREON ARE PROVIDED AS STANDARD  
CONSTRUCTION DETAILS WITHIN HERRIMAN  
CITY. DEVIATION FROM THIS DOCUMENT  
REQUIRES APPROVAL OF HERRIMAN CITY.  
HERRIMAN CITY CANNOT BE HELD LIABLE  
FOR MISUSE OR CHANGES REGARDING THIS  
DOCUMENT.



**HERRIMAN CITY  
ENGINEERING DEPARTMENT  
LANDSCAPE  
MANUAL DRAIN VALVE ASSEMBLY**

IR-33



- |  |   |
|--|---|
| <p>① FINISH GRADE</p> <p>② VALVE ID TAG WITH "MV" PRINTED ON IT</p> <p>③ MASTER VALVE WIRES FROM SOLENOID (INCLUDED)</p> <p>④ PAIR OF WIRES, COLOR CODED DIFFERENT THAN OTHER VALVES. REFER TO CONTROLLER SPECS</p> <p>⑤ 1 1/2" SCH 40 CONDUIT FROM CONTROLLER PER SPECS. PULL BOXES EVERY 200' AND ON EACH SIDE OF HARDSCAPE AREAS.</p> <p>⑥ PVC MAINLINE PIPING PER IRRIGATION SPECS (PLAN SIZE)</p> <p>⑦ FILTER FABRIC PER SPECS</p> <p>⑧ 4"x4" TREATED TIMBER FRAME</p> <p>⑨ JUMBO VALVE BOX (WITH EXTENSION(S) PER SPECS).</p> <p>⑩ PRESSURE REDUCING PILOT</p> | <p>⑪ WATERPROOF WIRE CONNECTORS (3M DBY/DBR).</p> <p>⑫ SHIELDED FLOW SENSOR WIRES TO CONTROLLER (PER CONTROLLER SPECS).</p> <p>⑬ HYDROMETER - SEE IRRIGATION SCHEDULE</p> <p>⑭ SCH. 80 PVC MIPT ADAPTOR SIZE PER VALVE AND MAINLINE PIPING (2 REQUIRED)</p> <p>⑮ DRAINAGE NUT FOR WINTERAZATION (INCLUDED).</p> <p>⑯ CONCRETE PAVER SUPPORT BLOCK.</p> <p>⑰ COMPACTED 3/4" CRUSHED SEWER ROCK. 12" THICK MIN.</p> <p>⑱ NATIVE SOIL COMPACTED TO 90% MDD PER ASTM D-1557</p> |
|--|---|

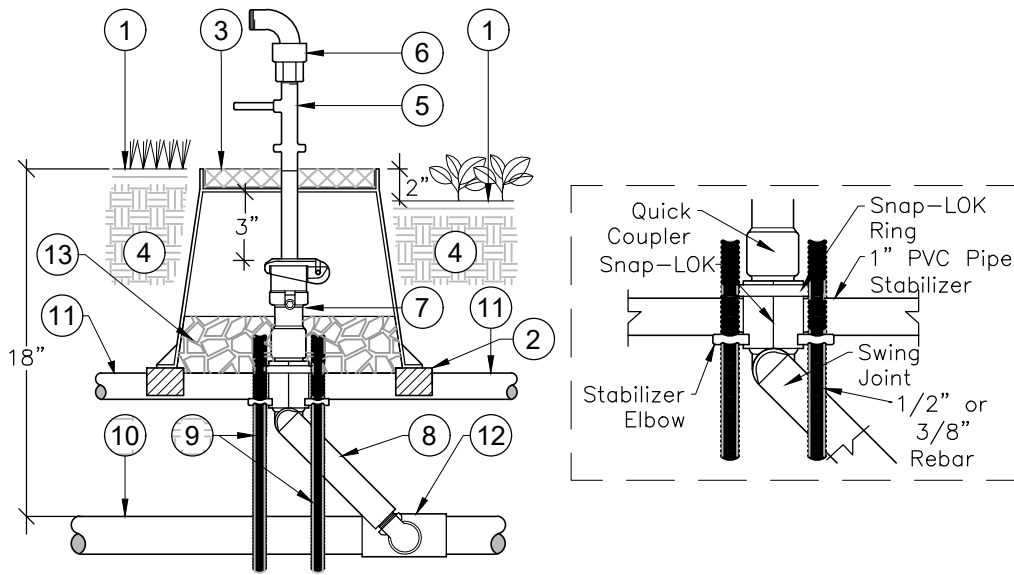
NO.	REVISION DESCRIPTION	DATE

THIS DOCUMENT AND ANY ILLUSTRATIONS HEREON ARE PROVIDED AS STANDARD CONSTRUCTION DETAILS WITHIN HERRIMAN CITY. DEVIATION FROM THIS DOCUMENT REQUIRES APPROVAL OF HERRIMAN CITY. HERRIMAN CITY CANNOT BE HELD LIABLE FOR MISUSE OR CHANGES REGARDING THIS DOCUMENT.



**HERRIMAN CITY**  
**ENGINEERING DEPARTMENT**  
**LANDSCAPE**  
**HYDROMETER MASTER VALVE & FLOW SENSOR**

**IR-34**



- ① FINISH GRADE
- ② 4"x4" TREATED TIMBER FRAME
- ③ 10" ROUND GREEN PLASTIC VALVE BOX W/ BOLT LOCK (CARSON OR APPROVED EQUAL)
- ④ APPROVED BACKFILL
- ⑤ QUICK COUPLER KEY
- ⑥ QUICK COUPLER HOSE SWIVEL
- ⑦ QUICK COUPLER VALVE (SEE IRRIGATION EQUIPMENT SCHEDULE)
- ⑧ LASCO STANDARD UNITIZED SWING JOINT, WITH SNAP-LOK STABILIZER ELBOW OUTLET. NOTE: INLET IS MPT, OUTLET IS BRASS MPT W/ SNAP-LOK
- ⑨ 3/8" OR 1/2" X 24" REBAR (2) REQUIRED
- ⑩ MAINLINE PIPE, PVC - SEE IRRIGATION PLAN
- ⑪ 1" PVC PIPE STABILIZER (OPTIONAL)
- ⑫ SERVICE TEE OR ELBOW, SCH. 40 (SIZE PER PLAN), SIZE TEE/ELBOW FIPT OUTLET BASED ON MIPT INLET SIZE OF THE SWING JOINT
- ⑬ 3-4" 3/4" CRUSHED SEWER ROCK

NO.	REVISION DESCRIPTION	D-T-E

THIS DOCUMENT -ND -NY ILLUSTR-TIONS HEREON -RE PROVIDED -S ST-ND-RD CONSTRUCTION DET-ILS WITHIN HERRIM-N CITY. DEVI-TION FROM THIS DOCUMENT REQUIRES -P-PROV-L OF HERRIM-N CITY. HERRIM-N CITY C-NNOT BE HELD LI-BLE FOR MISUSE OR CH-NGES REG-RDING THIS DOCUMENT.



**HERRIMAN CITY**  
**ENGINEERING DEPARTMENT**  
**LANDSCAPE**  
**QUICK COUPLING VALVE ASSEMBLY**

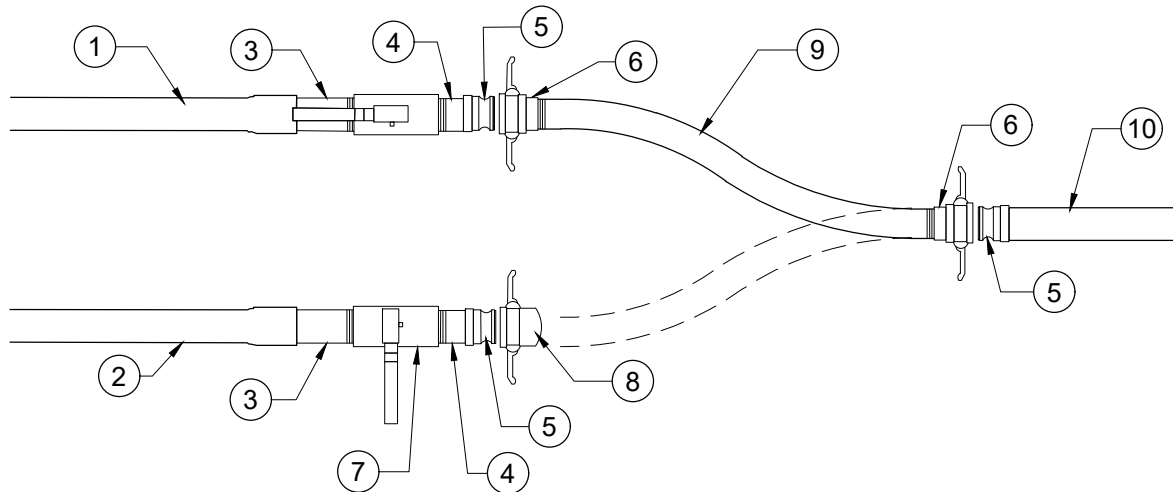
**IR-35**

### EQUIPMENT SIZING TABLE

CITY METER SIZE	SHUT OFF SIZE	INITIAL MAIN LINE SIZE	RPA SIZE	FILTER SIZE	MASTER VALVE/FLOW METER SIZE	MASTER VALVE/FLOW METER DEVICE	MAXIMUM AREA OF COVERAGE (8 HR. WATER WINDOW)
1"	1"	1 ½"	1"	2"	1 ½"	HYDROMETER	UP TO 20,000 SQ/FT
2"	2"	2"	1 ½"	2"	1 ½"	HYDROMETER	UP TO 50,000 SQ/FT
2"	2"	3"	2"	3"	2"	HYDROMETER	UP TO 115,000 SQ/FT
4"	4"	4"	3"	4"	3"	HYDROMETER	UP TO 165,000 SQ/FT
4"	4"	6"	4"	4"	3"	HYDROMETER	UP TO 300,000 SQ/FT
6"	6"	6"	6"	6"	4"	HYDROMETER	UP TO 450,000 SQ/FT

#### NOTES:

1. MINIMUM MAIN LINE SIZE ACCEPTABLE ON ANY IRRIGATION SYSTEM IS 1".
2. THIS CHART ASSUMES A SINGLE POC PER IRRIGATION SYSTEM.
3. STOP & WASTE VALVES SHALL NOT BE ALLOWED OR ACCEPTED BY HERRIMAN CITY FOR DESIGN OR CONSTRUCTION.
4. FOR AREAS OVER 450,000 SQ/FT OR 10.3 ACRES, CONSULT WITH HERRIMAN CITY PARKS, WATER & ENGINEERING TO DETERMINE PROPER EQUIPMENT SIZING.



- ① SECONDARY WATER SOURCE FROM FILTER
- ② CULINARY SOURCE FROM BACKFLOW DEVICE
- ③ PVC TOE NIPPLE
- ④ THREAD NIPPLE
- ⑤ CAMLOCK MALE ADAPTER
- ⑥ CAMLOCK COUPLER
- ⑦ BRASS BALL OR GATE VALVE
- ⑧ CAMLOCK CAP

- ⑨ 200 PSI RED WATER HOSE
- ⑩ HOSE TO HYDROMETER

NOTES:

PLACE ASSEMBLY IN LARGE POLYCRETE CARSON VAULT. VAULT MUST BE LARGE ENOUGH TO ALLOW FOR CLEARANCE AROUND ALL VALVES AND CAMLOCKS, AND SWING OF HOSE FROM ONE SUPPLY TO ANOTHER. CITY MUST APPROVE VAULT PRIOR TO INSTALL

NO.	REVISION DESCRIPTION	D-T-E

THIS DOCUMENT -ND -NY ILLUSTRATIONS HEREON -RE PROVIDED -S -ST-ND-RD CONSTRUCTION DET-ILS WITHIN HERRIMAN CITY. DEVI-TION FROM THIS DOCUMENT REQUIRES -PPROV-L OF HERRIMAN CITY. HERRIMAN CITY C-NNOT BE HELD U-BLE FOR MISUSE OR CH-NGES REG-RDING THIS DOCUMENT.



**HERRIMAN CITY**  
**ENGINEERING DEPARTMENT**  
 LANDSCAPE  
 PHYSICAL DISCONNECT

**IR-37**

# HERRIMAN CITY APPROVED IRRIGATION EQUIPMENT LIST

## June 2020

EQUIPMENT TYPE	DESCRIPTION	MANUFACTURER
Main Line (≥6")	PVC CL. 200 gasketed bell end	
Main Line (≤4")	PVC SCH. 40 solvent weld	
Main Line Fittings (≥6")	Mechanical Joint (M.J.) or Deep Bell push-on gasketed ductile iron	Harco or Leemco
Main Line Fittings (≤4")	PVC SCH. 80 solvent weld	
Lateral Line	PVC SCH. 40 solvent weld	
Lateral Line Fittings (all)	PVC SCH. 40 solvent weld (buried); PCV SCH. 80 solvent weld (exposed)	
Master Valve	Hydrometer	Netafim
Isolation Gate Valve (line size)	Cast or Ductile Iron, resilient wedge, non-rising stem, 2" square operating nut, fusion bonded epoxy	Matco, Nibco, Mueller, Milwaukee
Electric Remote Control Valve	Commercial grade, industrial strength glass-filled nylon globe valve	Rain Bird PEB and PESB Series
Drip Valve Assembly	Low volume control zone kit with valve, filter, and pressure regulator	Netafim or Rain Bird
Quick Coupling Valve	1" locking rubber cover, 2-piece body	Rain Bird 44-LRC
Manual Drain Valve (main line)	3/4" bronze irrigation ball valve, 2-piece, body, weld top	Apollo, No. 78-621-01
Manual Drain Valve (drip)	1/2" PVC ball valve	Netafim TLSOV
Backflow Preventer (≤2")	Reduced pressure backflow preventer	Wilkins / Zurn. No. 975XL Febco 825YA
Backflow Preventer (>2")	Reduced pressure backflow preventer	Wilkins / Zurn, No. 375; Febco 880V
Backflow Enclosure	Aluminum, marine grade	Strongbox (size by backflow preventer assembly dimensions and requirements)
Automatic Filter (2" - 4")	Plastic filter, automatic operation, battery operated	Amiad Mini Sigma Series
Automatic Filter (≥6")	Steel filter, automatic operation, hydraulic operation	Amiad Filtomat Series
Semi-automatic Filter (≤3")	Plastic filter, manual operation	Amiad Scanaway Series
Semi-automatic Filter (≥3")	Steel filter, manual operation	Amiad Scanaway Series

\\S:\FILES\PUBLIC\PROJECTS\HERRIMAN\83-17-040 CITY STANDARDS MANUAL UPDATE 2017\TEXT\SUBMITTALS\SECTION 6 (COMPLETE)\2020-11-05\IR-DETAILS.DWG

1/7/2021 4:54 PM

THIS DOCUMENT -NO- ILLUSTRATIONS HEREON -RE- PROVIDED -S- STANDARD CONSTRUCTION DETAILS WITHIN HERRIMAN CITY. DEVIATION FROM THIS DOCUMENT REQUIRES -PROV-L- OF HERRIMAN CITY. HERRIMAN CITY CANNOT BE HELD U-BLE FOR MISUSE OR CHANGES REGARDING THIS DOCUMENT.				<b>HERRIMAN CITY</b> <b>ENGINEERING DEPARTMENT</b> LANDSCAPE IRRIGATION EQUIPMENT LIST (pg 1 of 2)	<b>IR-38</b>
NO.	REVISION DESCRIPTION	D-T-E			

# HERRIMAN CITY APPROVED IRRIGATION EQUIPMENT LIST

## June 2020

EQUIPMENT TYPE	DESCRIPTION	MANUFACTURER
Main Line ( $\geq 6"$ )	PVC CL. 200 gasketed bell end	
Main Line ( $\leq 4"$ )	PVC SCH. 40 solvent weld	
Main Line Fittings ( $\geq 6"$ )	Mechanical Joint (M.J.) or Deep Bell push-on gasketed ductile iron	Harco or Leemco
Main Line Fittings ( $\leq 4"$ )	PVC SCH. 80 solvent weld	
Lateral Line	PVC SCH. 40 solvent weld	
Lateral Line Fittings (all)	PVC SCH. 40 solvent weld (buried); PCV SCH. 80 solvent weld (exposed)	
Master Valve	Hydrometer	Netafim
Isolation Gate Valve (line size)	Cast or Ductile Iron, resilient wedge, non-rising stem, 2" square operating nut, fusion bonded epoxy	Matco, Nibco, Mueller, Milwaukee
Electric Remote Control Valve	Commercial grade, industrial strength glass-filled nylon globe valve	Rain Bird PEB and PESB Series
Drip Valve Assembly	Low volume control zone kit with valve, filter, and pressure regulator	Netafim or Rain Bird
Quick Coupling Valve	1" locking rubber cover, 2-piece body	Rain Bird 44-LRC
Manual Drain Valve (main line)	3/4" bronze irrigation ball valve, 2-piece, body, weld top	Apollo, No. 78-621-01
Manual Drain Valve (drip)	1/2" PVC ball valve	Netafim TLSOV
Backflow Preventer ( $\leq 2"$ )	Reduced pressure backflow preventer	Wilkins / Zurn. No. 975XL Febco 825YA
Backflow Preventer ( $> 2"$ )	Reduced pressure backflow preventer	Wilkins / Zurn, No. 375; Febco 880V
Backflow Enclosure	Aluminum, marine grade	Strongbox (size by backflow preventer assembly dimensions and requirements)
Automatic Filter (2" - 4")	Plastic filter, automatic operation, battery operated	Amiad Mini Sigma Series
Automatic Filter ( $\geq 6"$ )	Steel filter, automatic operation, hydraulic operation	Amiad Filtomat Series
Semi-automatic Filter ( $\leq 3"$ )	Plastic filter, manual operation	Amiad Scanaway Series
Semi-automatic Filter ( $\geq 3"$ )	Steel filter, manual operation	Amiad Scanaway Series

\\SLOFILES\PUBLIC\PROJECTS\HERRIMAN\83-17-040 CITY STANDARDS MANUAL UPDATE 2017\TEXT\SUBMITTALS\SECTION 6 (COMPLETE)\2020-11-05\IR-DETAILS.DWG

1/7/2021 4:54 PM

THIS DOCUMENT -NO- ILLUSTRATIONS HEREON -RE- PROVIDED -S- STANDARD CONSTRUCTION DETAILS WITHIN HERRIMAN CITY. DEVIATION FROM THIS DOCUMENT REQUIRES -PROV-L- OF HERRIMAN CITY. HERRIMAN CITY CANNOT BE HELD U-BLE FOR MISUSE OR CHANGES REGARDING THIS DOCUMENT.				<b>HERRIMAN CITY</b> <b>ENGINEERING DEPARTMENT</b> LANDSCAPE IRRIGATION EQUIPMENT LIST (pg 2 of 2)	<b>IR-39</b>
NO.	REVISION DESCRIPTION	D-T-E			